

INDEX

BLACK HAWK COUNTY, IOWA:ss

FEE BOOK # 2005 06427

PROOF

FILED FOR RECORD SEP 9, 2004, AT 10:00 A.M. FEE 1-5.00-1.00X

COMPARED

Jeffrey P. Helland

BLACK HAWK COUNTY RECORDER

PAUL HELLAND

Jeffrey P. Helland, 1107 Technology Parkway, Cedar Falls, Iowa 50613-6951, (319)-266-0161

UNITED STATES PUBLIC LAND SURVEY CORNER CERTIFICATE
OFLAND SURVEY MONUMENTS SITUATED IN SECTION NO. 31, TOWNSHIP NO. 87 NORTH, RANGE
NO. 14 WEST OF THE FIFTH PRINCIPAL MERIDIAN, BLACK HAWK COUNTY, IOWA.

PREVIOUSLY RECORDED IN BOOK _____, PAGE _____.

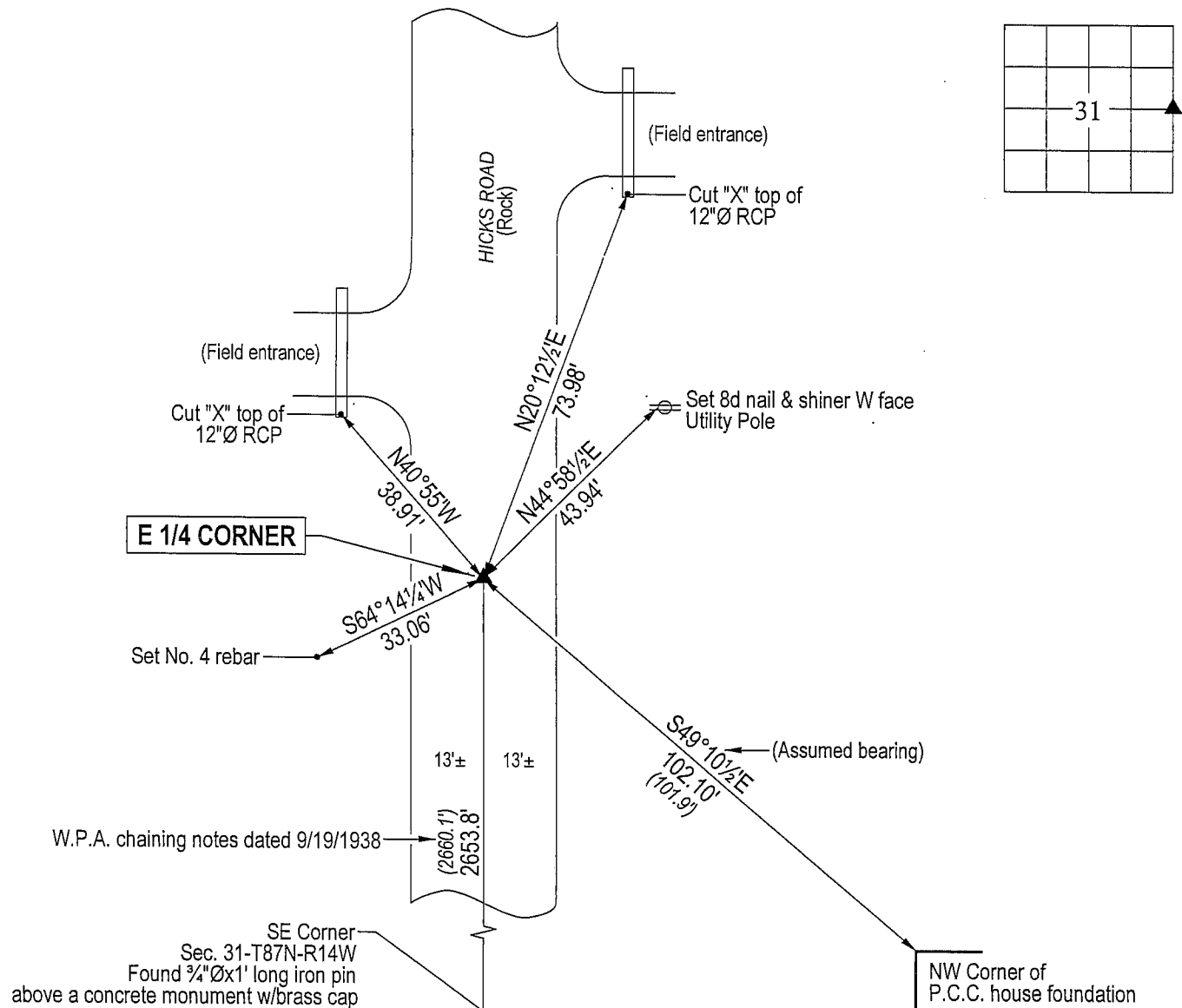
(SHOW REASON FOR PREPARING THIS CERTIFICATE, THE EVIDENCE AND DETAILED PROCEDURES USED IN ESTABLISHING THE
CORNER POSITIONS AND MONUMENTATION FOUND OR PLACED.)

MONUMENT DESCRIPTION AND REMARKS:

No corner certificate on file. Survey completed in the SE 1/4 of Sec. 31-T87N-R14W.

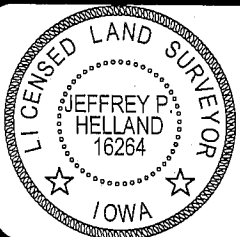
- E 1/4 CORNER: Black Hawk County Engineer reference ties dated 9/19/1938 calls for (concrete monument w/brass cap). All reference ties obliterated. Of additional Black Hawk County Engineer reference ties (no date), two ties remain: NW corner of house to the SE and RCP to the NE. Using said two ties intersected tie distances and started excavation. Found concrete monument w/brass cap "31+32", 0.7' deep. Set No. 4 rebar on North edge for magnetic detection. Note large discrepancy between field measurement and W.P.A. chaining notes.

PLAN VIEW

(SHOW A MINIMUM OF THREE REFERENCE TIES TO DURABLE PHYSICAL OBJECTS, RELEVANT MONUMENTS AND PHYSICAL
CONDITIONS THAT WILL ENABLE RECOVERY OF THE CORNER.)**HELLAND ENGINEERING & SURVEYING, LTD.**
1107 Technology Parkway
Cedar Falls, Iowa 50613-6951
(319)-266-0161

(00.00') - Per Black Hawk County Engineer ties

File Name: 04-287c1.drg

I hereby certify that this land surveying document was prepared
and the related survey work was performed by me or under my
direct personal supervision and that I am a duly licensed Land
Surveyor under the laws of the State of Iowa.*Jeffrey P. Helland 9/26/04*
Jeffrey P. Helland
License Number 16264
My license renewal date is December 31, 2005.
All pages or sheets are covered by this seal except:**LIST CORNERS TO BE INDEXED**

CORNER	SECTION	TOWNSHIP	RANGE
E 1/4 CORNER	31	87N	14W