

PROOF FILED FOR RECORD JUN 9, 2003, AT 12:30 P.M. FEE 1-5.00/.

COMPARED Christina L. Jones BLACK HAWK COUNTY RECORDER

HELLAND ENGINEERING 1107 TECHNOLOGY PKWY CEDAR FALLS IA 50613-6951

Paul H. Helland, 1107 Technology Parkway, Cedar Falls, Iowa 50613-6951, (319)-266-0161

# UNITED STATES PUBLIC LAND SURVEY CORNER CERTIFICATE OF

LAND SURVEY MONUMENTS SITUATED IN SECTION NO. 30, TOWNSHIP NO. 87 NORTH, RANGE  
NO. 14 WEST OF THE FIFTH PRINCIPAL MERIDIAN, BLACK HAWK COUNTY, IOWA.

PREVIOUSLY RECORDED IN BOOK \_\_\_\_\_, PAGE \_\_\_\_\_.

(SHOW REASON FOR PREPARING THIS CERTIFICATE, THE EVIDENCE AND DETAILED PROCEDURES USED IN ESTABLISHING THE CORNER POSITIONS AND MONUMENTATION FOUND OR PLACED.)

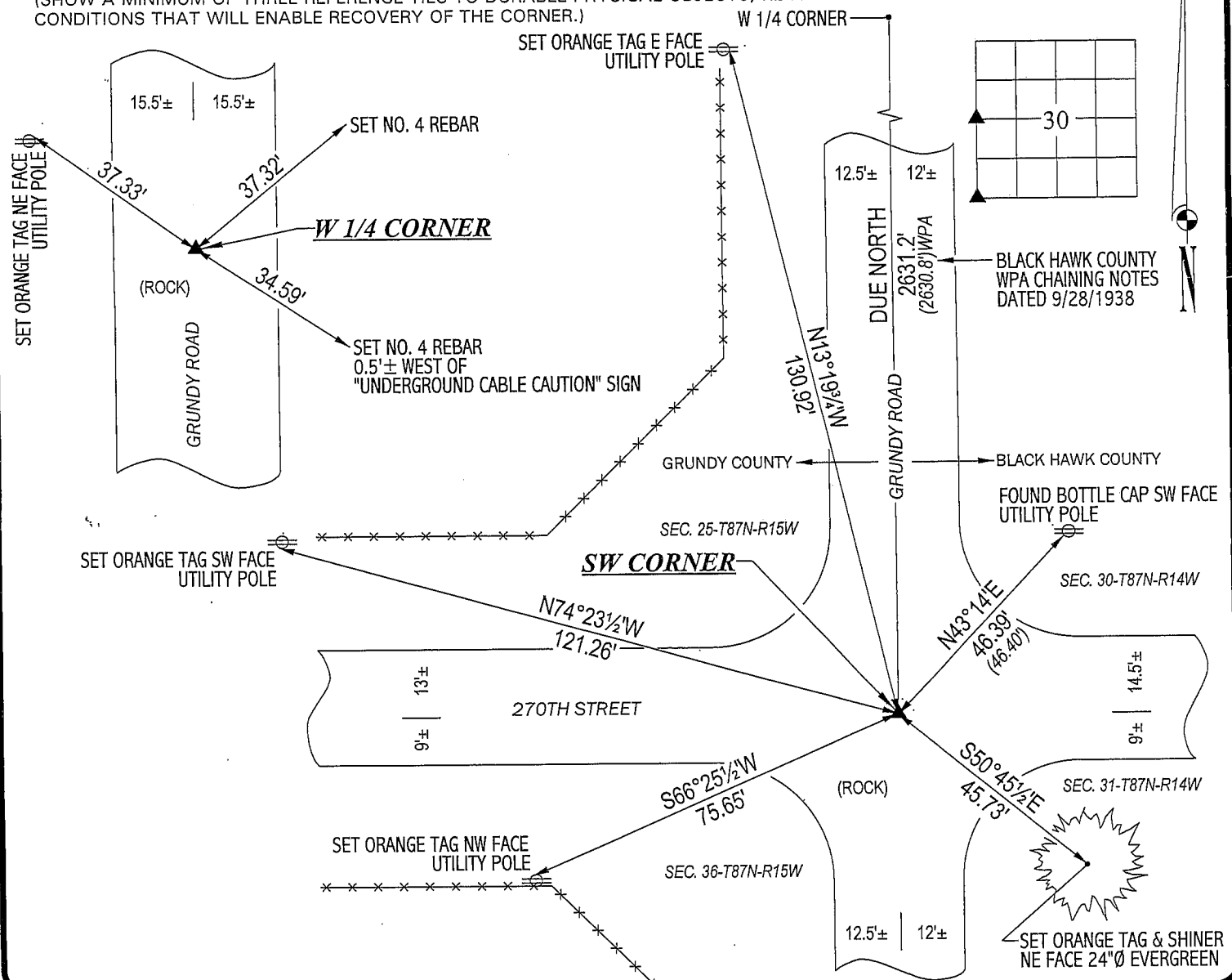
MONUMENT DESCRIPTION AND REMARKS:

NO CORNER CERTIFICATES ON FILE. SURVEY DONE IN NE 1/4 SE 1/4 OF SEC. 25-T87N-R15W.

- W 1/4 CORNER: GRUNDY COUNTY ENGINEER & BLACK HAWK COUNTY ENGINEER REFERENCE TIES CALL FOR A CONCRETE MONUMENT. FOUND CONCRETE MONUMENT w/BRASS CAP 0.4' DEEP. ALSO FOUND NO. 5 REBAR ON SOUTH SIDE OF CONCRETE MONUMENT FOR MAGNETIC DETECTION.
- SW CORNER: BK 1 PG 66 CALLS FOR 3/4" IRON PIN. FOUND 3/4"Ø IRON PIN (1' LONG) 0.9' DEEP. CONTINUED EXCAVATION AND FOUND CONCRETE MONUMENT w/BRASS CAP 1.9' DEEP. TOP OF 3/4"Ø IRON PIN LEANING EASTERLY WAS ABOUT 0.1' ± EAST OF CENTER OF SAID CONCRETE MONUMENT. SET SAID 3/4"Ø IRON PIN @ 0.4' DEPTH AND ABOVE CENTER OF SAID CONCRETE MONUMENT.

### PLAN VIEW

(SHOW A MINIMUM OF THREE REFERENCE TIES TO DURABLE PHYSICAL OBJECTS, RELEVANT MONUMENTS AND PHYSICAL CONDITIONS THAT WILL ENABLE RECOVERY OF THE CORNER.) W 1/4 CORNER —●

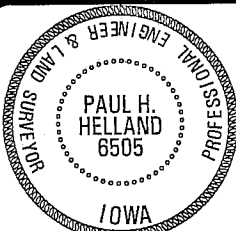


**HES**

**HELLAND ENGINEERING & SURVEYING, LTD.**  
1107 Technology Parkway  
Cedar Falls, Iowa 50613-6951  
(319)-266-0161

(00.00') - RECORDED AS

FILE NAME: 03-205C2.DRG



I hereby certify that this land surveying document was prepared and the related survey work was performed by me or under my direct personal supervision and that I am a duly licensed Land Surveyor under the laws of the State of Iowa.

Paul H. Holland  
License Number 6505  
My license renewal date is December 31, 2003.  
All names or sheets are covered by this seal except:

## LIST CORNERS TO BE INDEXED

<u>CORNER</u>	<u>SECTION</u>	<u>TOWNSHIP</u>	<u>RANGE</u>
W 1/4 CORNER	30	87N	14W
SW CORNER	30	87N	14W