

PREPARED BY
AND RETURN THIS ORIGINAL DOCUMENT TO:
ANTHONY F. HILDRETH
IOWA DEPARTMENT OF TRANSPORTATION
DISTRICT ONE OFFICE
1020 SOUTH 4TH STREET
AMES, IOWA 50010
PHONE 515-239-1593

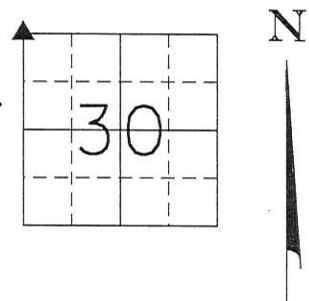
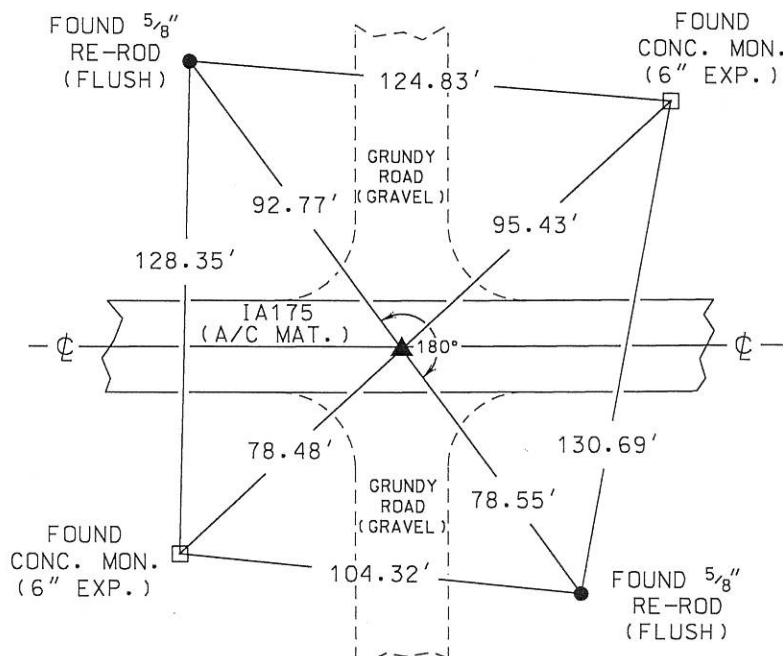
UNITED STATES PUBLIC LAND SURVEY CORNER CERTIFICATE

Land Survey Monument(s) situated in Section 30, Township 87 North, Range 14 West, of the Fifth Principal Meridian, BLACK HAWK County, Iowa.

Previously recorded in (SEE BELOW) in the County Recorder's Office.

Monument Description and Remarks: BEFORE A/C MAT. OVERLAY FOR I.D.O.T. PROJECT STPN-175-9(22)--2J-38 A "MAG" NAIL WAS FOUND BY USING FOUR U.S.P.L.S. CORNER CERTIFICATES PREPARED BY LEON H. CORNELIS (GRUNDY CO. RECORDER BOOK 1 PAGE 167), LEON H. CORNELIS (BLACK HAWK CO. RECORDER BOOK 318 PAGE 815), ANTHONY F. HILDRETH (GRUNDY CO. RECORDER BOOK 4 PAGE 51), & ANTHONY F. HILDRETH (BLACK HAWK CO. RECORDER INST. #2018-00007691). ACCEPTED "MAG" NAIL AS THE SECTION CORNER MONUMENT FOR THE NW CORNER OF SECTION 30-87N-14W. POSITION OF SAID SECTION CORNER MONUMENT WAS PRESERVED BY REDUNDANT R.T.K. G.P.S. TECHNIQUES. AFTER OVERLAY PROJECT WAS COMPLETED, A CONCRETE NAIL WAS SET AT THE SAID PRESERVED POSITION AND CHECKED USING R.T.K. G.P.S. TECHNIQUES. ACCEPTED CONCRETE NAIL AS THE NEW SECTION CORNER MONUMENT FOR THE NW CORNER OF SECTION 30-87N-14W. THIS CORNER CERTIFICATE WAS PREPARED BECAUSE THE SECTION CORNER MONUMENT OF RECORD HAS CHANGED.

PLAN - VIEW



I hereby certify that this Land Surveying document was prepared by me or under my direct personal supervision and that I am a duly licensed Professional Land Surveyor under the laws of the State of Iowa.

Signature: Anthony F. Hildreth

Date: May 8, 2019 Lic. No. 21993

My license renewal date is December 31, 2019.

Pages or sheets covered by this seal. 1

Corner to be Indexed

Corner

NW COR.

Sec. Twp. Range

30 87N 14W

Drawn by: A.F.H.