



PREPARED BY
*AND RETURN THIS ORIGINAL DOCUMENT TO:
ANTHONY F. HILDRETH
IOWA DEPARTMENT OF TRANSPORTATION
DISTRICT ONE OFFICE
1020 SOUTH 4TH STREET
AMES, IOWA 50010
PHONE 515-239-1593

RESERVED FOR COUNTY RECORDER'S USE

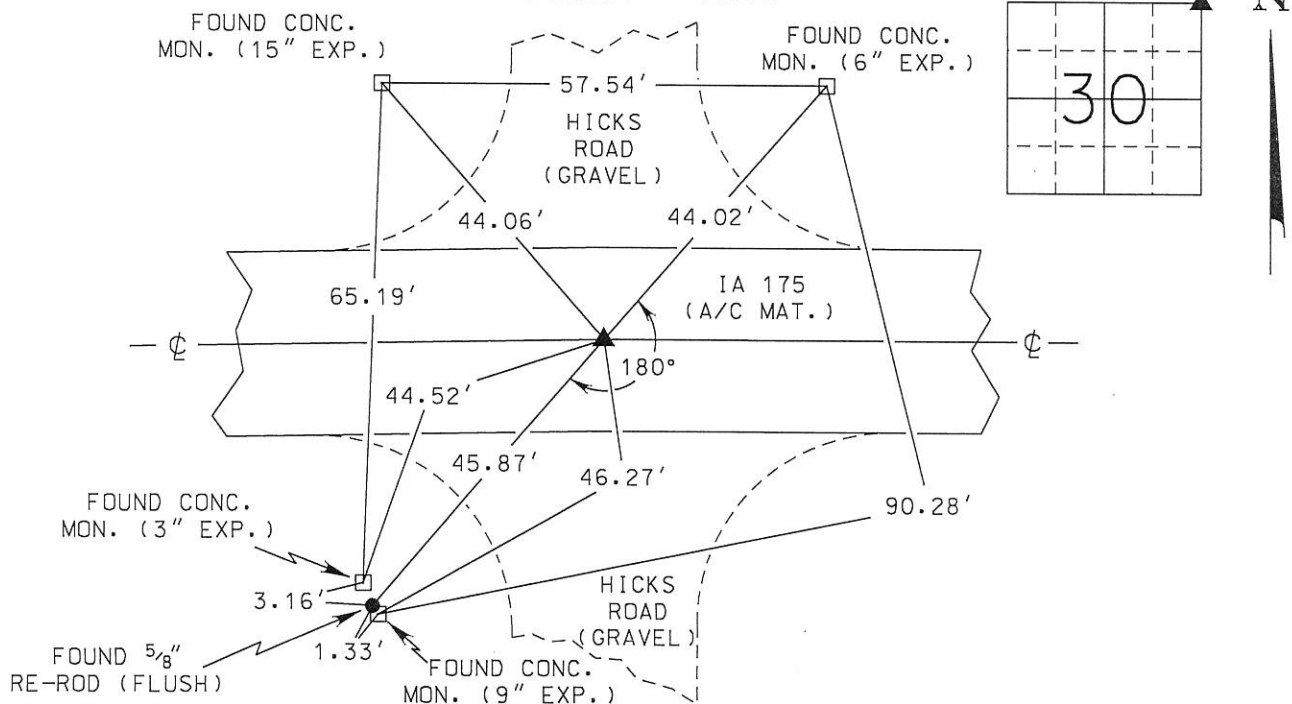
UNITED STATES PUBLIC LAND SURVEY CORNER CERTIFICATE

Land Survey Monument(s) situated in Section 30, Township 87 North, Range 14 West, of the Fifth Principal Meridian, BLACK HAWK County, Iowa.

Previously recorded in (SEE BELOW) in the County Recorder's Office.

Monument Description and Remarks: BEFORE A/C MAT. OVERLAY FOR I.D.O.T. PROJECT STPN-175-9(22)--2J-38 A "MAG" NAIL WAS FOUND BY USING THREE U.S.P.L.S. CORNER CERTIFICATES PREPARED BY LEON H. CORNELIS (BOOK 318 PAGE 823), JEFFREY P. HELLAND (INST. #2004-23431), & ANTHONY F. HILDRETH (INST. #2018-00007692). ACCEPTED "MAG" NAIL AS THE SECTION CORNER MONUMENT FOR THE NE CORNER OF SECTION 30-87N-14W. POSITION OF SAID SECTION CORNER MONUMENT WAS PRESERVED BY REDUNDANT R.T.K. G.P.S. TECHNIQUES. AFTER OVERLAY PROJECT WAS COMPLETED, A CONCRETE NAIL WAS SET AT THE SAID PRESERVED POSITION AND CHECKED USING R.T.K. G.P.S. TECHNIQUES. ACCEPTED CONCRETE NAIL AS THE NEW SECTION CORNER MONUMENT FOR THE NE CORNER OF SECTION 30-87N-14W. THIS CORNER CERTIFICATE WAS PREPARED BECAUSE THE SECTION CORNER MONUMENT OF RECORD HAS CHANGED.

PLAN - VIEW



I hereby certify that this Land Surveying document was prepared by me or under my direct personal supervision and that I am a duly licensed Professional Land Surveyor under the laws of the State of Iowa.

Signature: [Signature]
Anthony F. Hildreth

Date: May 8, 2019 Lic. No. 21993
My license renewal date is December 31, 2019.
Pages or sheets covered by this seal. 1

Corner to be Indexed		
Corner		
NE COR.		
Sec.	Twp.	Range
30	87N	14W
Drawn by: <u>A.F.H.</u>		