

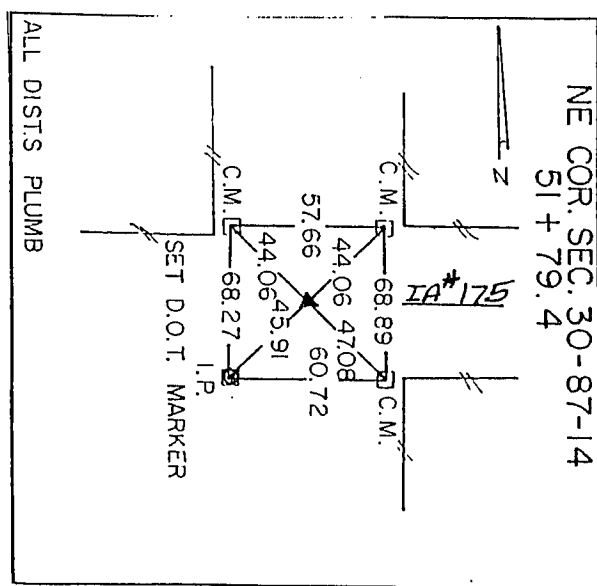
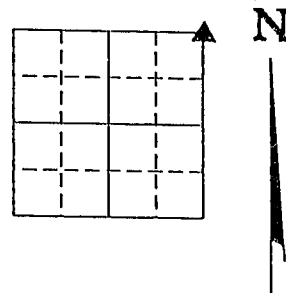
UNITED STATES PUBLIC LAND SURVEY CORNER CERTIFICATE
OF

Land Survey Monuments situated in Section 30, Township 87 North, Range 14 West, of
the Fifth Principal Meridian, BLACKHAWK County, Iowa.

Previously recorded in N.A. in the County Recorder's Office.

Monument Description and Remarks: Set D.O.T. aluminum marker over hinge nail
after A.C. resurfacing.

PLAN - VIEW



I hereby certify that the survey work was completed and this certificate
was prepared by me or under my direct personal supervision and that
I am a duly registered land surveyor under the laws of the state of
Iowa.

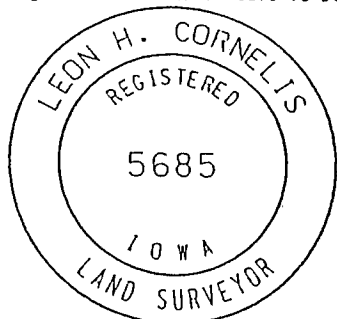
Signature: Leon H. Cornelis

Leon H. Cornelis

Date: Dec. 4, 1995

Reg. No. 5685

My registration renewal date is Dec. 31, 1996.



Corners	Section	Twp.	Range
NE.	30	87N	14W

MISC. BK. 318 p. 823