

Patricia A. Liso

BLACK HAWK COUNTY RECORDER

PAUL HELLAND

Jeffrey P. Helland, 1107 Technology Parkway, Cedar Falls, Iowa 50613-6951, (319)-266-0161

UNITED STATES PUBLIC LAND SURVEY CORNER CERTIFICATE OF

LAND SURVEY MONUMENTS SITUATED IN SECTION NO. 30, TOWNSHIP NO. 87 NORTH, RANGE NO. 14 WEST OF THE FIFTH PRINCIPAL MERIDIAN, Black Hawk COUNTY, IOWA.
PREVIOUSLY RECORDED IN Misc. Bk 318 Pgs 815 & 823

(SHOW REASON FOR PREPARING THIS CERTIFICATE, THE EVIDENCE AND DETAILED PROCEDURES USED IN ESTABLISHING THE CORNER POSITIONS AND MONUMENTATION FOUND OR PLACED.)

MONUMENT DESCRIPTION AND REMARKS:

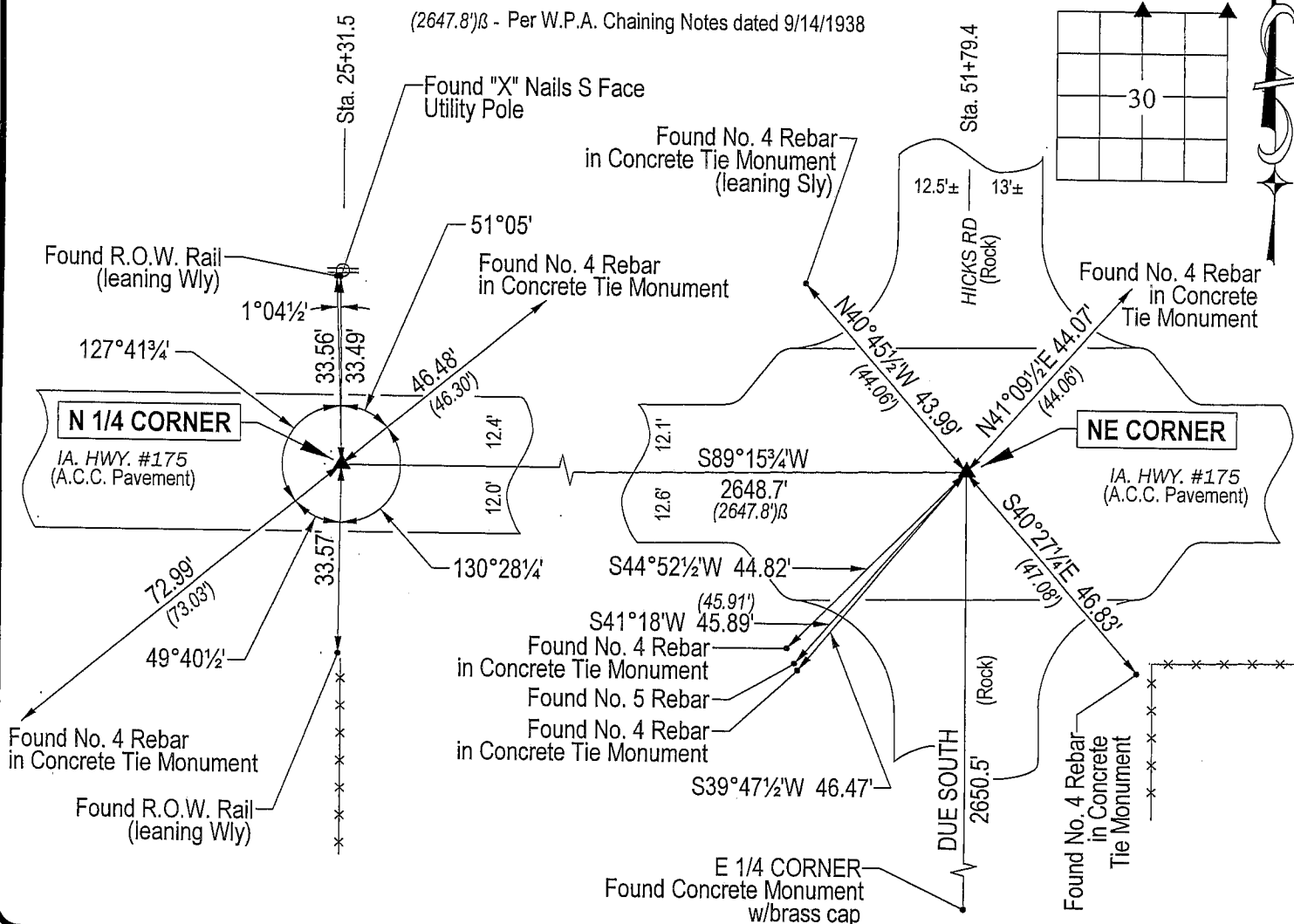
Monumentation per Corner Certificate Misc. Bk 318 Pg 815 for the N 1/4 Corner has changed. Monumentation per Corner Certificate Misc. Bk 318 Pg 823 for the NE Corner has changed. Survey completed in the NE 1/4 of Sec. 30, N 1/4 CORNER; Misc. Bk 318 Pg 815. "A" for the SE CORNER.

→ N 1/4 CORNER: Misc. Bk 318 Pg 815 calls for "set D.O.T. aluminum marker over hinge nail after A.C. resurfacing." Said D.O.T. aluminum marker has popped out of A.C.C. pavement. Nails were found approximately 1' NW, NE, SE and SW of 0.35"Ø hole left in A.C.C. by said D.O.T. aluminum marker. Intersected nails to establish position of N 1/4 Corner. Set "mag" nail in A.C.C. pavement 0.10' below surface of A.C.C. pavement.

→ NE CORNER: Misc. Bk 318 Pg 823 calls for "set D.O.T. aluminum marker over hinge nail after A.C. resurfacing." Said D.O.T. aluminum marker has popped out of A.C.C. pavement. Nails were found approximately 1' NW, NE, SE and SW of 0.35'Ø hole left in A.C.C. by said D.O.T. aluminum marker. Intersected nails to establish position of N 1/4 Corner. Set "mag" nail in A.C.C. pavement 0.10' below surface of A.C.C. pavement.

PLAN VIEW

(SHOW A MINIMUM OF THREE REFERENCE TIES TO DURABLE PHYSICAL OBJECTS, RELEVANT MONUMENTS AND PHYSICAL CONDITIONS THAT WILL ENABLE RECOVERY OF THE CORNER.)

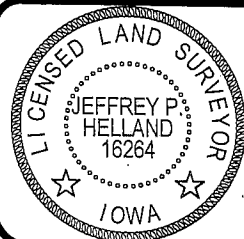


HELLAND ENGINEERING & SURVEYING, LTD.

1107 Technology Parkway
Cedar Falls, Iowa 50613-6951
(319)-266-0161

(00.00') - Recorded As

File Name: 04-111C1.dwg



I hereby certify that this land surveying document was prepared and the related survey work was performed by me or under my direct personal supervision and that I am a duly licensed Land Surveyor under the laws of the State of Iowa.

Jeffrey P. Helland 1/22/04
Jeffrey P. Helland
License Number 16264

My license renewal date is December 31, 2005.
All pages or sheets are covered by this seal except:

LIST CORNERS TO BE INDEXED

CORNER	SECTION	TOWNSHIP	RANGE
N 1/4 CORNER	30	87N	14W
NE CORNER	30	87N	14W