

20 04 23432

PROOF

FILED FOR RECORD

FEB 2

2004

AT 4:00 P. M.

FFF 1-5.00X - 5.00X

COMPARED

PAUL HELLAND

BLACK HAWK COUNTY RECORDER

Jeffrey P. Helland, 1107 Technology Parkway, Cedar Falls, Iowa 50613-6951, (319)-266-0161

UNITED STATES PUBLIC LAND SURVEY CORNER CERTIFICATE OF

LAND SURVEY MONUMENTS SITUATED IN SECTION NO. 30, TOWNSHIP NO. 87 NORTH, RANGE NO. 14 WEST OF THE FIFTH PRINCIPAL MERIDIAN, Black Hawk COUNTY, IOWA.

PREVIOUSLY RECORDED IN _____

(SHOW REASON FOR PREPARING THIS CERTIFICATE, THE EVIDENCE AND DETAILED PROCEDURES USED IN ESTABLISHING THE CORNER POSITIONS AND MONUMENTATION FOUND OR PLACED.)

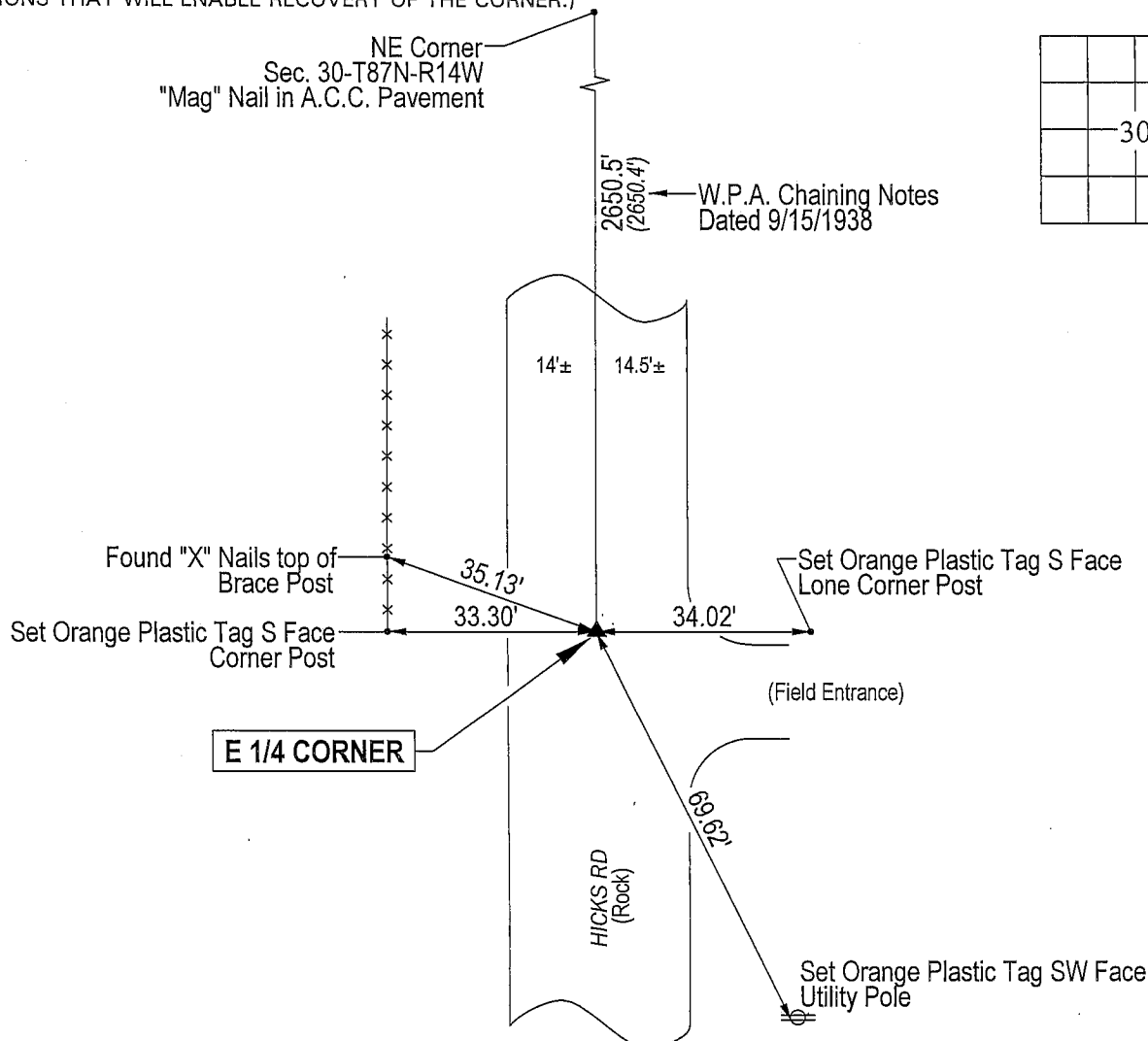
MONUMENT DESCRIPTION AND REMARKS:

No Corner Certificate on file. Survey completed in the NE 1/4 of Sec. 30-T87N-R14W.

→ E 1/4 CORNER: Black Hawk County Engineer reference ties dated 9/15/1938 calls for a "concrete monument." All reference ties obliterated. Found concrete monument w/brass cap labeled " 30 + 29 ". Said concrete monument is 0.8' deep. Also found 60d nail w/red flagging (lying on its side) on top of said concrete monument. A No. 3 rebar is on the North side of said concrete monument, unable to lower rebar, so rebar was bent Southerly over concrete monument.

PLAN VIEW

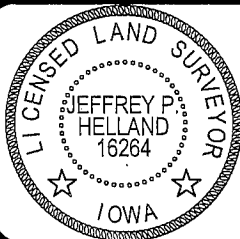
(SHOW A MINIMUM OF THREE REFERENCE TIES TO DURABLE PHYSICAL OBJECTS, RELEVANT MONUMENTS AND PHYSICAL CONDITIONS THAT WILL ENABLE RECOVERY OF THE CORNER.)



HELLAND ENGINEERING & SURVEYING, LTD.
1107 Technology Parkway
Cedar Falls, Iowa 50613-6951
(319)-266-0161

(00.00') - Recorded As

File Name: 04-111C2.drg



I hereby certify that this land surveying document was prepared and the related survey work was performed by me or under my direct personal supervision and that I am a duly licensed Land Surveyor under the laws of the State of Iowa.

Jeffrey P. Helland 1/22/04
Jeffrey P. Helland
License Number 16264
My license renewal date is December 31, 2005.
All pages or sheets are covered by this seal except:

LIST CORNERS TO BE INDEXED

<u>CORNER</u>	<u>SECTION</u>	<u>TOWNSHIP</u>	<u>RANGE</u>
E 1/4 CORNER	30	87N	14W

Ref