

PREPARED BY  
\* AND RETURN THIS ORIGINAL DOCUMENT TO:  
ANTHONY F. HILDRETH  
IOWA DEPARTMENT OF TRANSPORTATION  
DISTRICT ONE OFFICE  
1020 SOUTH 4TH STREET  
AMES, IOWA 50010  
PHONE 515-239-1593

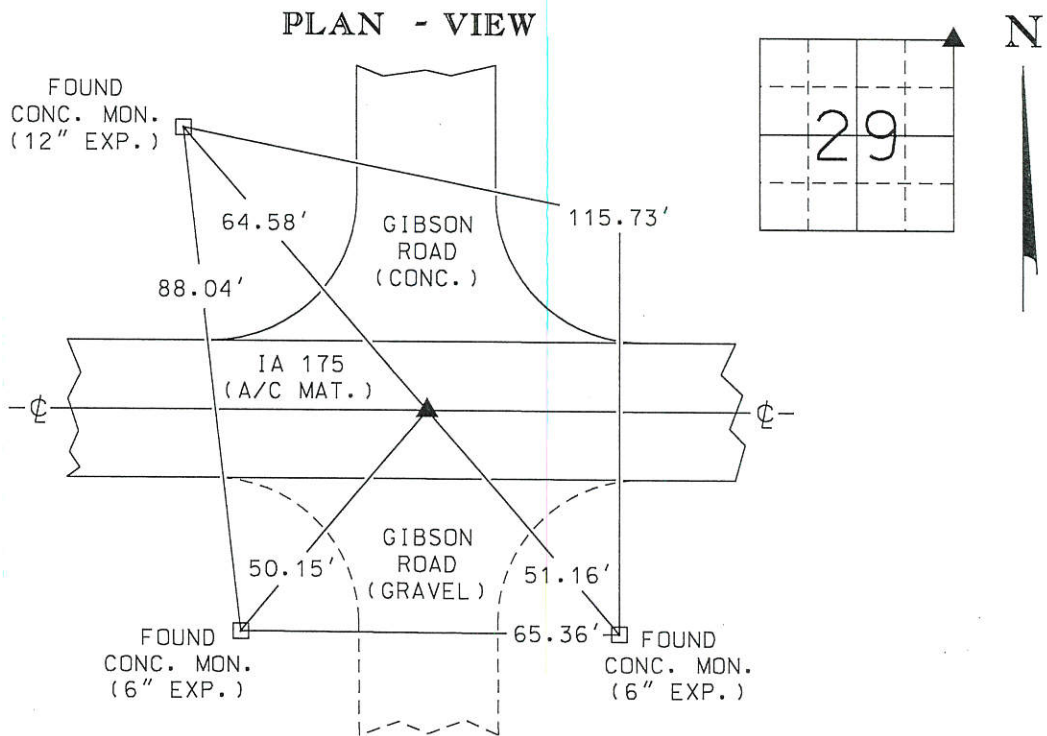
RESERVED FOR COUNTY RECORDER'S USE

**UNITED STATES PUBLIC LAND SURVEY CORNER CERTIFICATE**

Land Survey Monument(s) situated in Section 29, Township 87 North, Range 14 West, of the Fifth Principal Meridian, BLACK HAWK County, Iowa.

Previously recorded in BOOK 318 PAGE 817 & INST. #2018-00007693 in the County Recorder's Office.

Monument Description and Remarks: BEFORE A/C MAT. OVERLAY FOR I.D.O.T. PROJECT STPN-175-9(22)--2J-38 A "MAG" NAIL WAS FOUND BY USING TWO U.S.P.L.S. CORNER CERTIFICATES PREPARED BY LEON H. CORNELIS (BOOK 318 PAGE 817) & ANTHONY F. HILDRETH (INST. #2018-00007693). ACCEPTED "MAG" NAIL AS THE SECTION CORNER MONUMENT FOR THE NE CORNER OF SECTION 29-87N-14W. POSITION OF SAID SECTION CORNER MONUMENT WAS PRESERVED BY REDUNDANT R.T.K. G.P.S. TECHNIQUES. AFTER OVERLAY PROJECT WAS COMPLETED, A CONCRETE NAIL WAS SET AT THE SAID PRESERVED POSITION AND CHECKED USING R.T.K. G.P.S. TECHNIQUES. ACCEPTED CONCRETE NAIL AS THE NEW SECTION CORNER MONUMENT FOR THE NE CORNER OF SECTION 29-87N-14W. THIS CORNER CERTIFICATE WAS PREPARED BECAUSE THE SECTION CORNER MONUMENT OF RECORD HAS CHANGED.



	I hereby certify that this Land Surveying document was prepared by me or under my direct personal supervision and that I am a duly licensed Professional Land Surveyor under the laws of the State of Iowa.		Corner to be Indexed		
	Signature: <u>Anthony F. Hildreth</u>		Corner		
	Date: <u>May 8, 2019</u> Lic. No. <u>21993</u>		NE CORNER		
	My license renewal date is December 31, 2019.		Sec.	Twp.	Range
	Pages or sheets covered by this seal. <u>1</u>		29	87N	14W
		Drawn by: <u>A.F.H.</u>			