



PREPARED BY
AND RETURN THIS ORIGINAL DOCUMENT TO:
ANTHONY F. HILDRETH
IOWA DEPARTMENT OF TRANSPORTATION
DISTRICT ONE OFFICE
1020 SOUTH 4TH STREET
AMES, IOWA 50010
PHONE 515-239-1593

RESERVED FOR COUNTY RECORDER'S USE

Doc ID: 008265610001 Type: GEN
Recorded: 11/01/2017 at 08:26:25 AM
Fee Amt: \$7.00 Page 1 of 1
Black Hawk County Iowa
SANDIE L. SMITH RECORDER
File **2018-00007693**

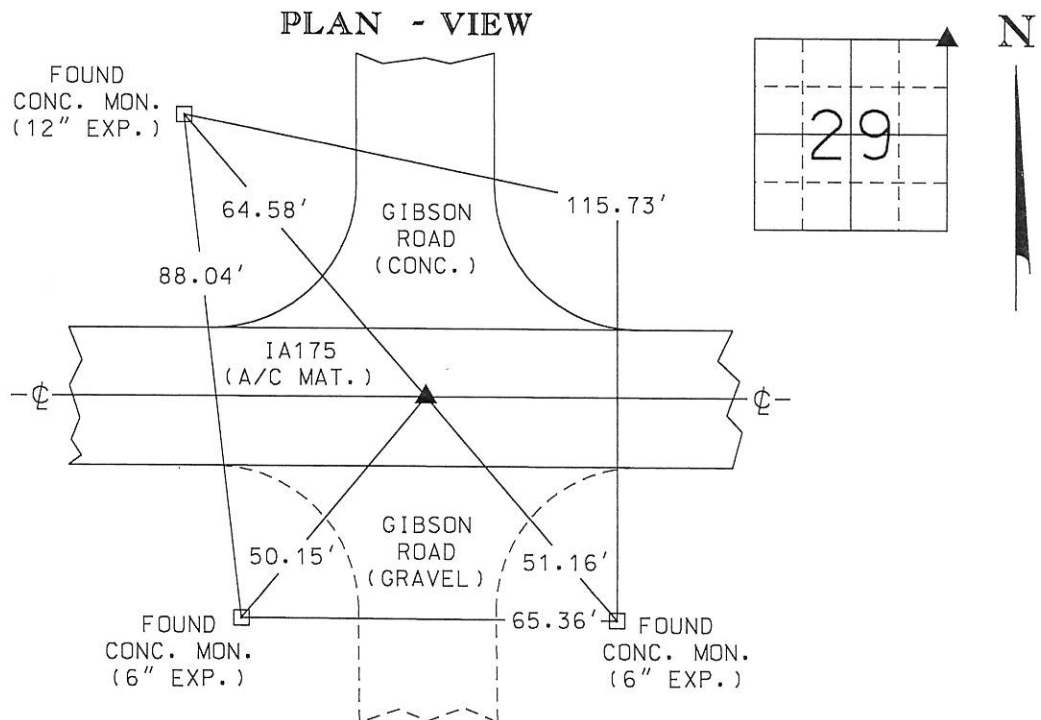
UNITED STATES PUBLIC LAND SURVEY CORNER CERTIFICATE

Land Survey Monument(s) situated in Section 29, Township 87 North, Range 14 West, of the Fifth Principal Meridian, BLACK HAWK County, Iowa.

Previously recorded in BOOK 318 PAGE 817 in the County Recorder's Office.

Monument Description and Remarks: SEARCHED A 5' +/- DIAMETER AREA ON THE ASPHALT SURFACE OF IA175 AT THE DISTANCE INTERSECTIONS OF FOUND REFERENCE TIE MONUMENTS OF RECORD FROM A UNITED STATES PUBLIC LAND SURVEY CORNER CERTIFICATE PREPARED BY LEON H. CORNELIS (BOOK 318 PAGE 817). NOTHING WAS FOUND BUT A 4" HOLE IN THE ASPHALT AT THE SAID INTERSECTION OF THE REFERENCE TIE MONUMENTS. DUG A 1'Wx1'Lx0.9'D HOLE, AT SAID INTERSECTION OF REFERENCE TIE MONUMENTS, THROUGH THE ASPHALT, DOWN TO RUBBILIZED CONCRETE, SEARCHING FOR A HINGE NAIL OF RECORD AND FOUND NOTHING. THEREFORE, SET A "MAG" NAIL, IN THE ASPHALT PATCH, AT SAID INTERSECTION OF REFERENCE TIE MONUMENTS AND ACCEPTED THAT AS THE SECTION CORNER MONUMENT FOR THE NE CORNER OF SECTION 29-87N-14W. THIS CORNER CERTIFICATE WAS PREPARED BECAUSE THE SECTION CORNER MONUMENT OF RECORD HAS CHANGED.

PLAN - VIEW



	I hereby certify that this Land Surveying document was prepared by me or under my direct personal supervision and that I am a duly licensed Professional Land Surveyor under the laws of the State of Iowa.	Corner to be Indexed		
	Signature: <u>[Signature]</u> Anthony F. Hildreth	Corner		
	Date: <u>October 23, 2017</u> Lic. No. <u>21993</u> My license renewal date is December 31, 2017.	NE CORNER		
	Pages or sheets covered by this seal. <u>1 OF 1</u>	Sec.	Twp.	Range
		29	87	14
	Drawn by: <u>A.F.H.</u>			