



Doc ID: 007533700001 Type: GEN
Recorded: 01/12/2017 at 11:06:36 AM
Fee Amt: \$7.00 Page 1 of 1
Black Hawk County Iowa
SANDIE L. SMITH RECORDER

File 2017-00012697

WAYNE CLAASSEN ENGINEERING AND SURVEYING, INC.
P.O. BOX 898 WATERLOO, IOWA 50704-0898

PHONE: (VOICE) 319-235-6294
(FAX) 319-235-0028

UNITED STATES PUBLIC LAND SURVEY CORNER CERTIFICATE

Land Survey Monuments situated in Section 29, Township 87 North, Range 14 West, of the Fifth Principal Meridian, Black Hawk County, Iowa.

Previously recorded in MISC. BK. 318 p.817 (J.T.) in County Recorder's Office.
(book, page, document number, etc.)

Monument Description and Remarks

Went to location of 1/4 corner and looked for monumentation and found none. Found 4 nails at reasonable location of N 1/4 corner. Set mag nail and washer #16775 at intersection of 4 nails the same way that the NW corner of this section (Document No. 2004-23431) was established.

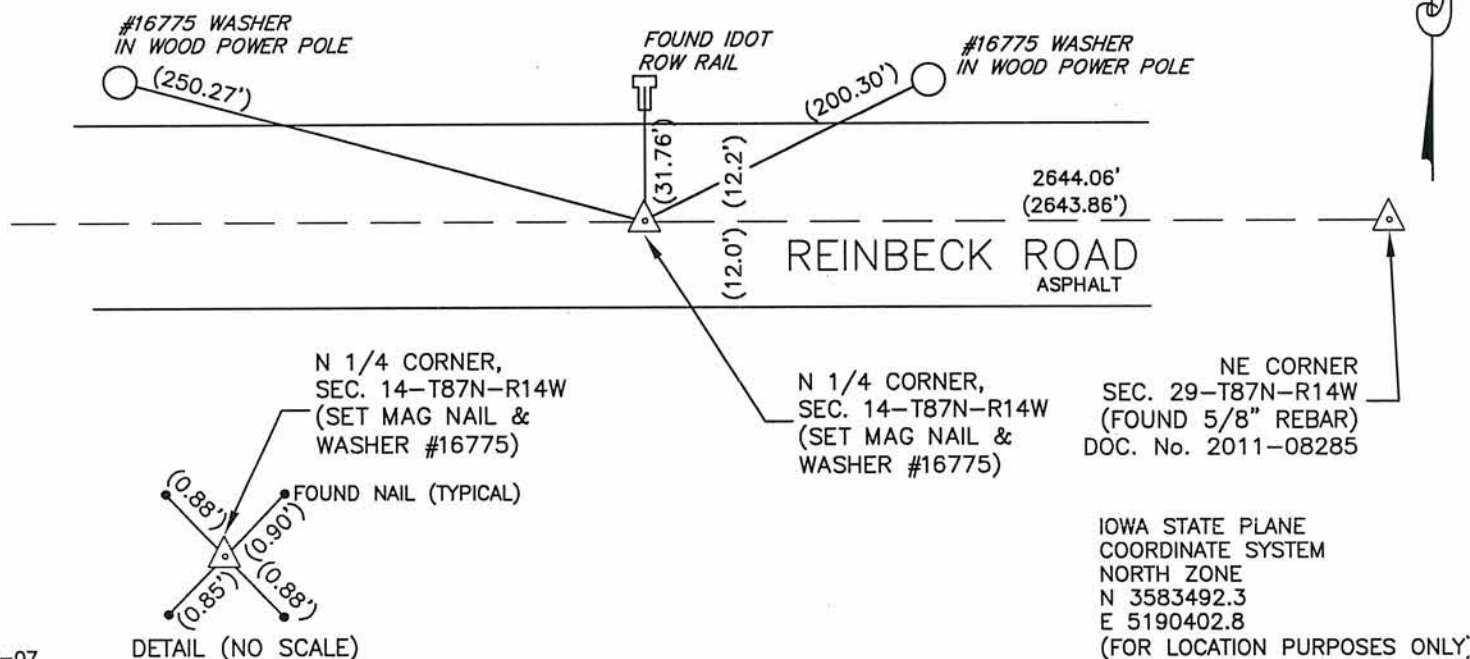
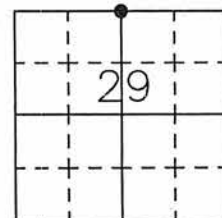
PLAN - VIEW

Reason for filing certificate:

- ☒ There is no certificate on file with the Recorder's Office.
☐ Accepts corner position which differs from the one shown in above document.
☐ The corner monument was replaced or modified.
☐ The reference ties in above document were missing.

000.00 DENOTES RECORD DIMENSION FROM SURVEY BY
JENSON CONSULTING ENGINEERS, DATED 12-11-1980.

(000.00) DENOTES FIELD DIMENSION



748-07

I hereby certify that this land surveying document was prepared and the related survey work was performed by me or under my direct personal supervision and that I am a duly Licensed Land Surveyor under the laws of the State of Iowa.

Signature: David L. Scheil
David L. Scheil, L.S.

Date: JAN 04, 2017 Lic. No. 16775

Pages or Sheets Covered by this Seal: THIS SHEET ONLY.

My license renewal date is December 31, 2018

SEAL

List Corners to be Indexed

Corners	Section	Twp	Range
N 1/4 CORNER	29	87 N	14 W

