



Doc ID: 007533710001 Type: GEN
Recorded: 01/12/2017 at 11:06:41 AM
Fee Amt: \$7.00 Page 1 of 1
Black Hawk County Iowa
SANDIE L. SMITH RECORDER

File 2017-00012698

WAYNE CLAASSEN ENGINEERING AND SURVEYING, INC.
P.O. BOX 898 WATERLOO, IOWA 50704-0898

PHONE: (VOICE) 319-235-6294
(FAX) 319-235-0028

UNITED STATES PUBLIC LAND SURVEY CORNER CERTIFICATE

Land Survey Monuments situated in Section 29, Township 87 North, Range 14 West, of the Fifth Principal Meridian, Black Hawk County, Iowa.

Previously recorded in _____ in County Recorder's Office.
(book, page, document number, etc.)

Monument Description and Remarks

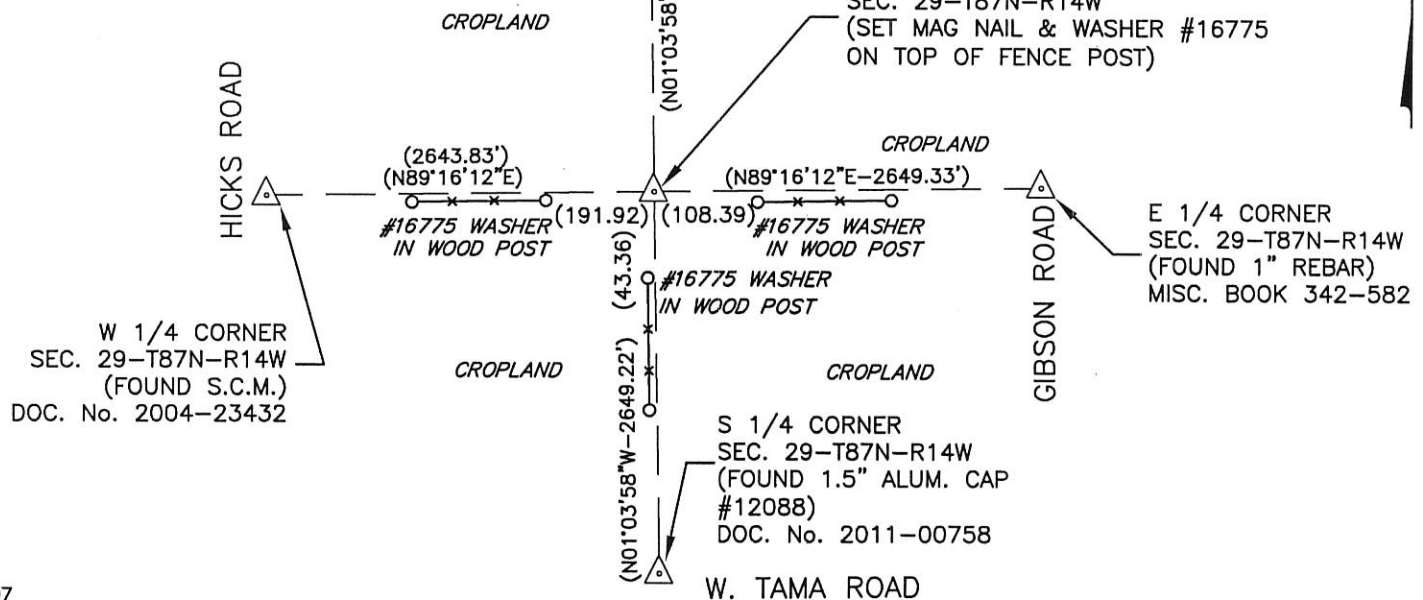
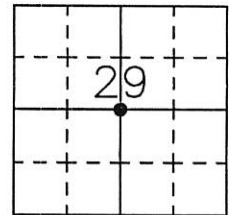
Went to location of center of Section and look for monumentation and found none. Set mag nail and washer #16775 on top of fence post at intersection of opposite 1/4 corners of this section.

PLAN - VIEW

Reason for filing certificate:

- ☒ There is no certificate on file with the Recorder's Office.
☐ Accepts corner position which differs from the one shown in above document.
☐ The corner monument was replaced or modified.
☐ The reference ties in above document were missing.

IOWA STATE PLANE
COORDINATE SYSTEM
NORTH ZONE
N 3580841.7
E 5190452.2
(FOR LOCATION PURPOSES ONLY)



748-07

I hereby certify that this land surveying document was prepared and the related survey work was performed by me or under my direct personal supervision and that I am a duly Licensed Land Surveyor under the laws of the State of Iowa.

Signature: _____

David L. Scheil, L.S.

Date: Jan 06, 2017 Lic. No. 16775

Pages or Sheets Covered by this Seal: THIS SHEET ONLY.

My license renewal date is December 31, 2018

SEAL

List Corners to be Indexed

Corners	Section	Twp	Range
CENTER,	29	87 N	14 W

