

Reserved for County Recorder's use

2025-05607

RECORDED: 04/28/2025 11:01:45 AM

RECORDING FEE: \$7.00

REVENUE TAX: \$

COMBINED FEE: \$7.00

SANDIE L. SMITH, RECORDER  
BLACK HAWK COUNTY, IOWA

\* Kyle J Helland, 6109 Chancellor Drive, Cedar Falls, Iowa 50613-6916, (319)-266-0161

# UNITED STATES PUBLIC LAND SURVEY CORNER CERTIFICATE OF

LAND SURVEY MONUMENTS SITUATED IN SECTION NO 28, TOWNSHIP NO 87 NORTH, RANGE  
NO 14 WEST OF THE FIFTH PRINCIPAL MERIDIAN, BLACK HAWK COUNTY, IOWA  
PREVIOUSLY RECORDED IN N/A

(SHOW REASON FOR PREPARING THIS CERTIFICATE, THE EVIDENCE AND DETAILED PROCEDURES USED IN ESTABLISHING THE  
CORNER POSITIONS AND MONUMENTATION FOUND OR PLACED )

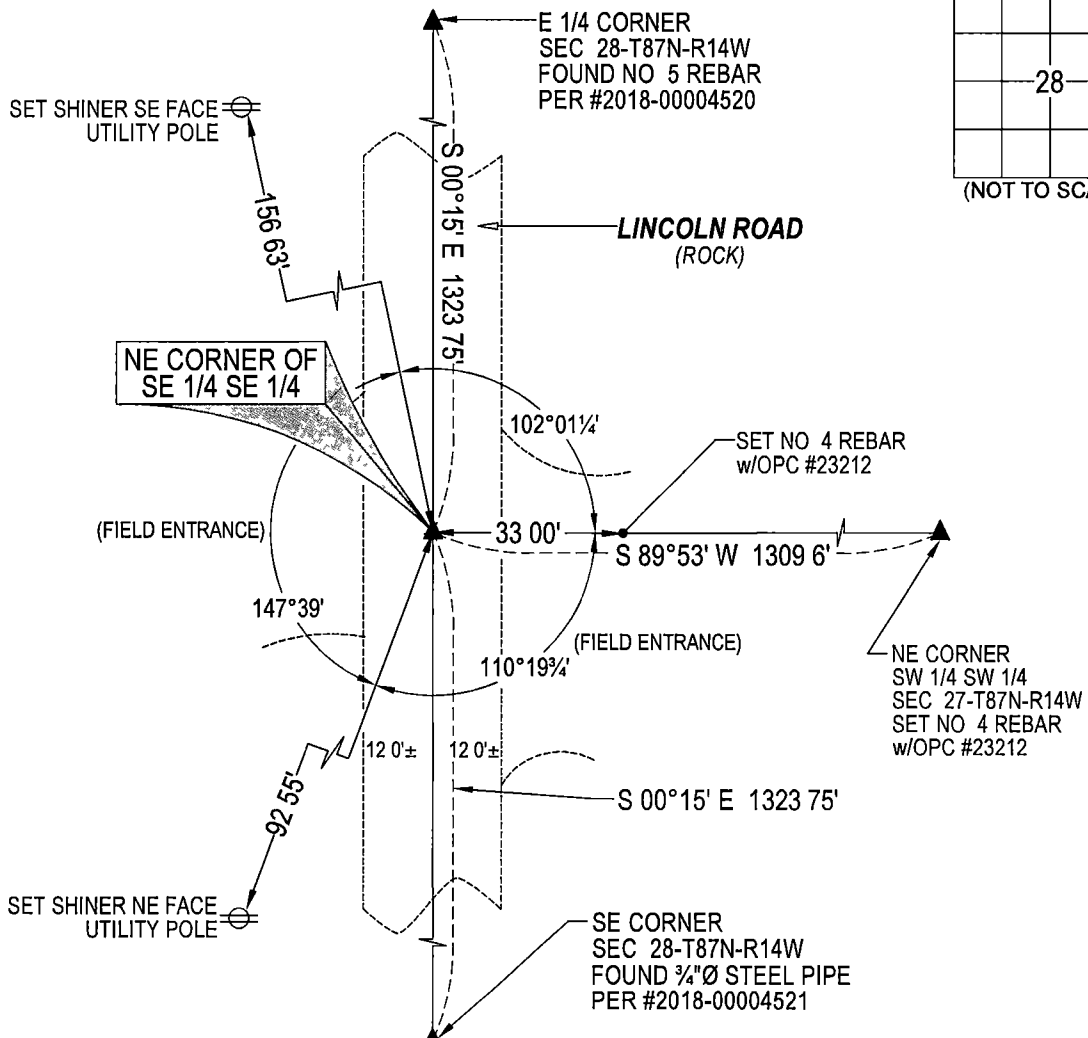
### MONUMENT DESCRIPTION AND REMARKS

NO USPLSCC ON FILE. SURVEY COMPLETED IN THE NW 1/4 & SW 1/4 OF SEC 27-T87N-R14W.

→ **NE CORNER OF THE SW 1/4 SW 1/4:** NO BLACK COUNTY ENGINEER TIES ARE AVAILABLE NOR ANY OTHER PUBLIC DOCUMENTATION OF THE HISTORY AND PERPETUATION OF CORNER WAS AVAILABLE. SEARCHED AREA WITH MAGNETIC DETECTOR, NOTHING FOUND. THEREFORE SET NO 4 REBAR w/OPC #23212 ON LINE AND AT MIDPOINT BETWEEN THE E 1/4 CORNER AND THE SE CORNER OF SECTION 28-T87N-R14W AND UTILIZED SAID SET NO 4 REBAR w/OPC #23212 AS CORNER

### PLAN VIEW

(SHOW A MINIMUM OF THREE REFERENCE TIES TO DURABLE PHYSICAL OBJECTS, RELEVANT MONUMENTS AND PHYSICAL CONDITIONS THAT WILL ENABLE RECOVERY OF THE CORNER )



(BEARINGS ARE ASSUMED)



**HELLAND ENGINEERING & SURVEYING, LTD**  
6109 Chancellor Drive  
Cedar Falls, Iowa 50613-6916  
(319)-266-0161

BRASS TAG = 4d NAIL & 13/16"Ø BRASS TAG DRAWN BY CDR  
SHINER = 1"Ø STEEL SHINER w/MASONRY NAIL  
OPC = PLASTIC CAP (O=ORANGE, R=RED, Y=YELLOW)  
(00') RECORDED AS FILE NAME 24-263-54 DWG



I hereby certify that this land surveying document was prepared and the related survey work was performed by me or under my direct personal supervision and that I am a duly licensed Professional Land Surveyor under the laws of the State of Iowa.  
*Kyle J Helland 04/29/2025*  
Kyle J Helland  
License Number 23212  
My license renewal date is December 31, 2025  
All pages or sheets are covered by this seal except

LIST CORNERS TO BE INDEXED				
CORNER	SECTION	TOWNSHIP	RANGE	
NE COR SE 1/4 SE 1/4	28	87N	14W	
SE COR NE 1/4 SE 1/4	28	87N	14W	
SW COR NW 1/4 SW 1/4	27	87N	14W	
NW COR SW 1/4 SW 1/4	27	87N	14W	