



Doc ID: 009460630001 Type: GEN
Recorded: 01/03/2019 at 04:15:32 PM
Fee Amt: \$7.00 Page 1 of 1
Black Hawk County Iowa
SANDIE L. SMITH RECORDER

File 2019-00010210

Reserved for County Recorder's use.

Kyle J. Helland, 6109 Chancellor Drive, Cedar Falls, Iowa 50613-6919, (319)-266-0161

UNITED STATES PUBLIC LAND SURVEY CORNER CERTIFICATE OF

LAND SURVEY MONUMENTS SITUATED IN SECTION NO. 28, TOWNSHIP NO. 87 NORTH, RANGE
NO. 14 WEST OF THE FIFTH PRINCIPAL MERIDIAN, BLACK HAWK COUNTY, IOWA.

PREVIOUSLY RECORDED IN FILE 2018-4519.

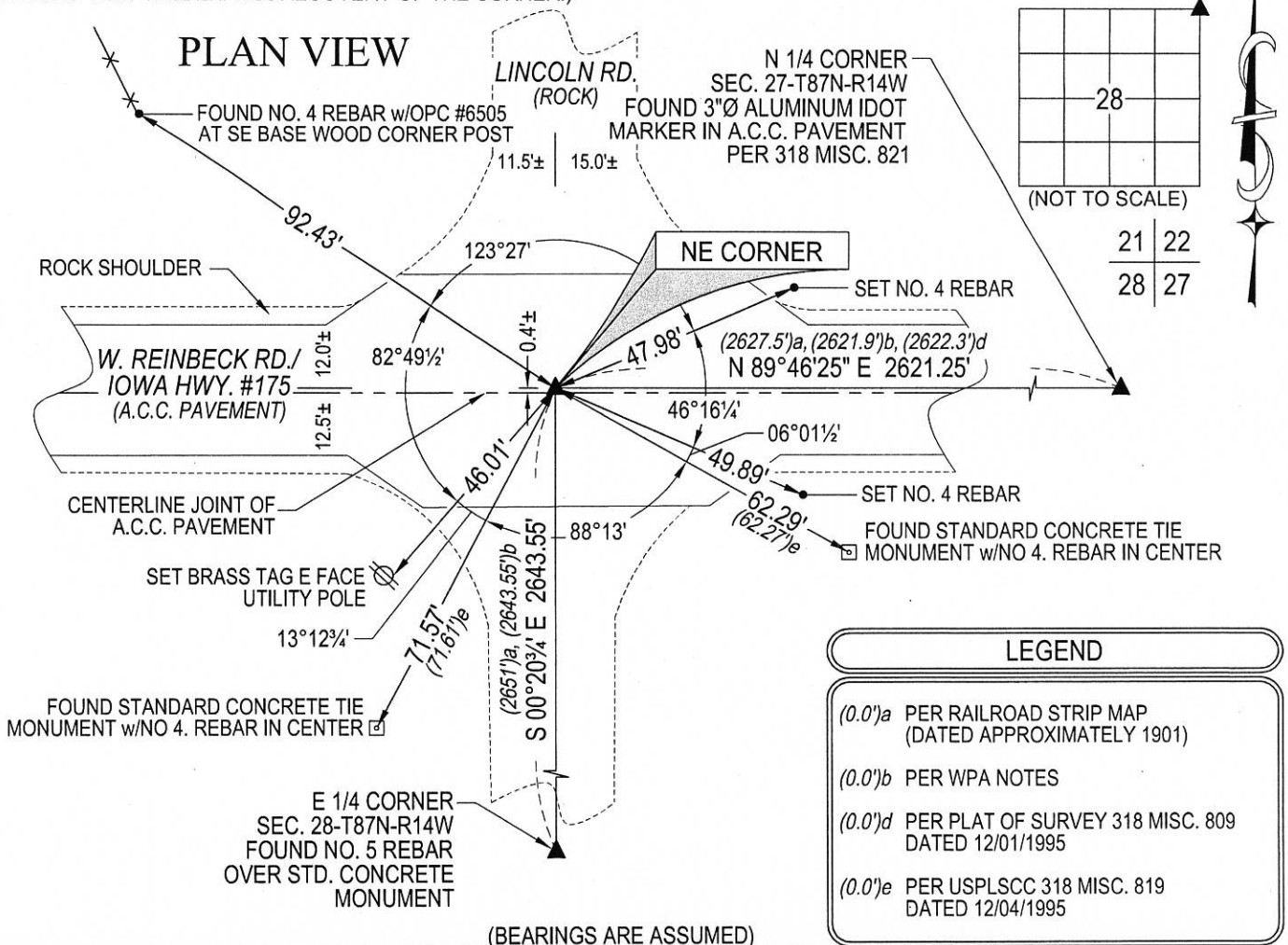
(SHOW REASON FOR PREPARING THIS CERTIFICATE, THE EVIDENCE AND DETAILED PROCEDURES USED IN ESTABLISHING THE
CORNER POSITIONS AND MONUMENTATION FOUND OR PLACED.)

MONUMENT DESCRIPTION AND REMARKS:

MONUMENTATION HAS CHANGED. SURVEY COMPLETED IN THE NW 1/4 OF SEC. 27-T87N-R14W.

→ **NE CORNER:** RAILROAD STRIP MAP DATED APPROXIMATELY 1901 CALLS FOR [STONE]. WPA NOTES PG 8
DATED 09/07/1938 CALLS FOR [FOUND LEAD PLUG IN & PAVEMENT]. USPLSCC 318 MISC. 819 DATED
12/04/1995 CALLS FOR [SET D.O.T. ALUMINUM MARKER OVER HINGE NAIL AFTER A.C. RESURFACING].
USPLSCC FILE 2018-4519 DATED 09/11/2017 CALLS FOR [SEARCHED AREA, FOUND THREE NAILS SET IN A.C.C.
1.0' NE, NW & SW OUTWARDLY FROM A 4" DIAMETER DISTURBED AREA IN A.C.C., A COMMON PRACTICE BY
THE IDOT IN RETYING A SECTION CORNER IN A PAVED ROADBED. USING SAID NAILS, SET "COTTON GIN"
SPIKE. LOCATION FITS WITHIN REASON OF FOUND CONCRETE TIE MONUMENTS TO THE SW & SE OF
CORNER]. SEARCHED AREA, NOTHING FOUND. ROAD HAS BEEN RECENTLY OVERLAID, THEREFORE RESET
"MAG" NAIL FROM TIES PER SAID USPLSCC FILE 2018-4519.

(SHOW A MINIMUM OF THREE REFERENCE TIES TO DURABLE PHYSICAL OBJECTS, RELEVANT MONUMENTS AND PHYSICAL
CONDITIONS THAT WILL ENABLE RECOVERY OF THE CORNER.)



HELLAND ENGINEERING & SURVEYING, LTD.
6109 Chancellor Drive
Cedar Falls, Iowa 50613-6919
(319)-266-0161

SHINER = 8d. NAIL & 1 5/16"Ø METAL SHINER DRAWN BY: JBL
BRASS TAG = 8d. NAIL & 13/16"Ø BRASS TAG
OPC = PLASTIC CAP (O=ORANGE, R=RED, Y=YELLOW)
(00') RECORDED AS FILE NAME: 17-177-27.DWG



I hereby certify that this land surveying document was prepared
and the related survey work was performed by me or under my
direct personal supervision and that I am a duly licensed
Professional Land Surveyor under the laws of the State of Iowa.
Kyle J. Helland 12/31/2019
Kyle J. Helland
License Number 23212
My license renewal date is December 31, 2019.
All pages or sheets are covered by this seal except:

LIST CORNERS TO BE INDEXED			
CORNER	SECTION	TOWNSHIP	RANGE
NE CORNER	28	87N	14W
SE CORNER	21	87N	14W
SW CORNER	22	87N	14W
NW CORNER	27	87N	14W