



PREPARED BY  
AND RETURN THIS ORIGINAL DOCUMENT TO:  
ANTHONY F. HILDRETH  
IOWA DEPARTMENT OF TRANSPORTATION  
DISTRICT ONE OFFICE  
1020 SOUTH 4TH STREET  
AMES, IOWA 50010  
PHONE 515-239-1593

RESERVED FOR COUNTY RECORDER'S USE

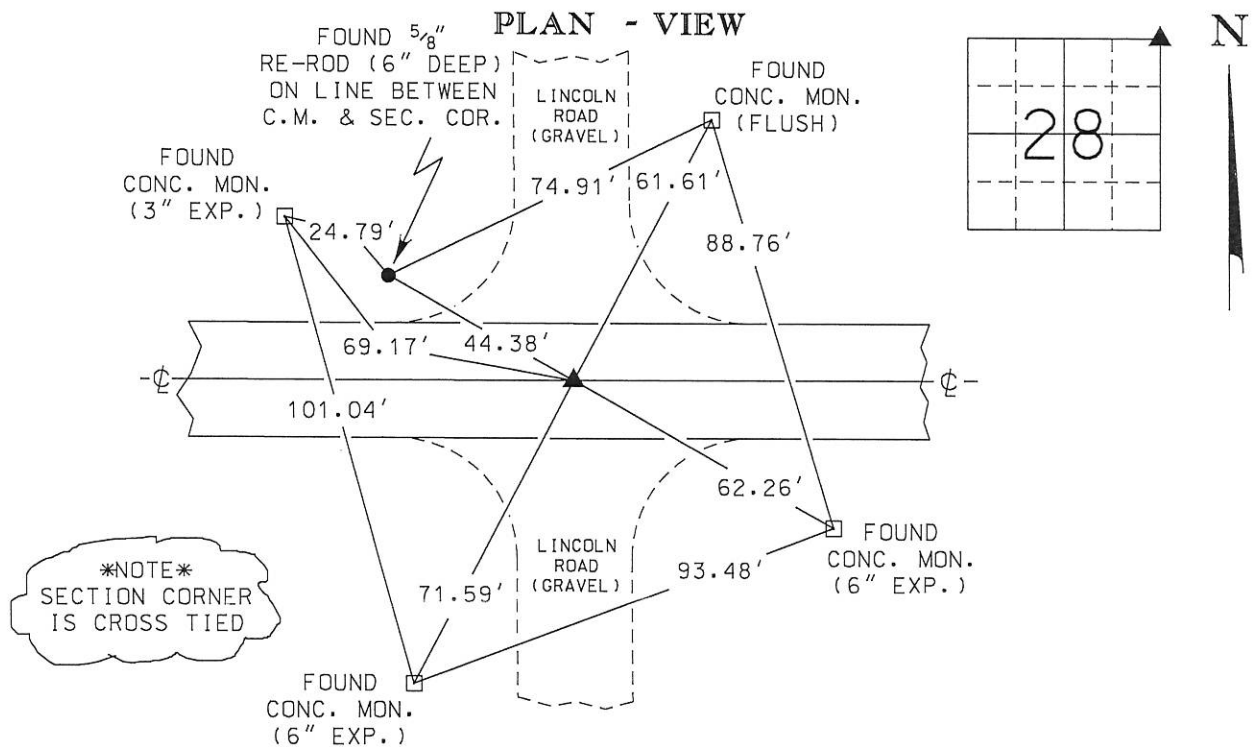
Doc ID: 008265620001 Type: GEN  
Recorded: 11/01/2017 at 08:26:34 AM  
Fee Amt: \$7.00 Page 1 of 1  
Black Hawk County Iowa  
SANDIE L. SMITH RECORDER  
File **2018-00007694**

UNITED STATES PUBLIC LAND SURVEY CORNER CERTIFICATE

Land Survey Monument(s) situated in Section 28, Township 87 North, Range 14 West, of the Fifth Principal Meridian, BLACK HAWK County, Iowa.

Previously recorded in BOOK 318 PAGE 819 in the County Recorder's Office.

Monument Description and Remarks: SEARCHED A 5' +/- DIAMETER AREA ON THE ASPHALT SURFACE OF IA175 AT THE DISTANCE INTERSECTIONS OF FOUND REFERENCE TIE MONUMENTS OF RECORD FROM A UNITED STATES PUBLIC LAND SURVEY CORNER CERTIFICATE PREPARED BY LEON H. CORNELIS (BOOK 318 PAGE 819). A "COTTON GIN" SPIKE WAS FOUND AT THE SAID INTERSECTION OF REFERENCE TIE MONUMENTS. FOUND "COTTON GIN" SPIKE IS CALLED OUT AS THE NW CORNER OF SECTION 27-87N-14W ON A RETRACEMENT PLAT OF SURVEY PREPARED BY KYLE J. HELLAND (DOC. ID #008157740003 FILE #2018-00002769). FOUND "COTTON GIN" SPIKE MATCHES DISTANCES OF RECORD TO ALL, BUT ONE, REFERENCE TIE MONUMENTS OF RECORD WITHIN REASON. THEREFORE, ACCEPTED THE FOUND "COTTON GIN" SPIKE AS THE SECTION CORNER MONUMENT FOR THE NE CORNER OF SECTION 28-87N-14W. THIS CORNER CERTIFICATE WAS PREPARED BECAUSE THE SECTION CORNER MONUMENT OF RECORD HAS CHANGED.



	I hereby certify that this Land Surveying document was prepared by me or under my direct personal supervision and that I am a duly licensed Professional Land Surveyor under the laws of the State of Iowa.	Corner to be Indexed		
	Signature: <u>Anthony F. Hildreth</u>	Corner		
	Date: <u>October 23, 2017</u> Lic. No. <u>21993</u>	NE CORNER		
	My license renewal date is December 31, 2017.	Sec.	Twp.	Range
	Pages or sheets covered by this seal. <u>1 OF 1</u>	28	87	14
		Drawn by: <u>A.F.H.</u>		