

RESERVED FOR COUNTY RECORDER'S USE

PREPARED BY  
AND RETURN THIS ORIGINAL DOCUMENT TO:  
ANTHONY F. HILDRETH  
IOWA DEPARTMENT OF TRANSPORTATION  
DISTRICT ONE OFFICE  
1020 SOUTH 4TH STREET  
AMES, IOWA 50010  
PHONE 515-239-1593

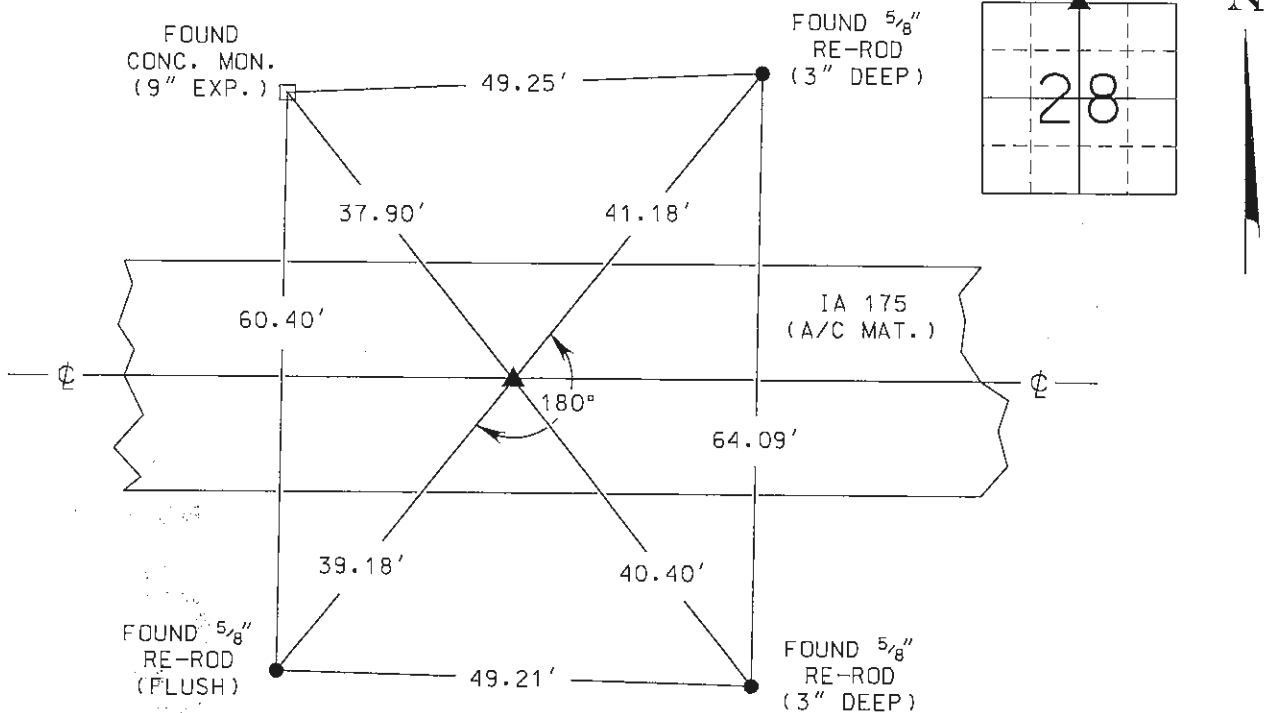
**UNITED STATES PUBLIC LAND SURVEY CORNER CERTIFICATE**

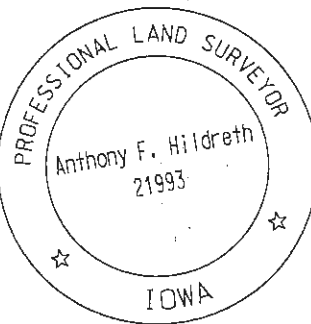

Land Survey Monument(s) situated in Section 28, Township 87 North, Range 14 West, of the Fifth Principal Meridian, BLACK HAWK County, Iowa.

Previously recorded in BOOK 318 PAGE 819 in the County Recorder's Office.

Monument Description and Remarks: BEFORE A/C MAT. OVERLAY FOR I.D.O.T. PROJECT STPN-175-9(22)--2J-38 AN I.D.O.T. ALUMINUM MONUMENT WAS FOUND BY USING A U.S.P.L.S. CORNER CERTIFICATE PREPARED BY LEON H. CORNELIS (BOOK 318 PAGE 819). ACCEPTED I.D.O.T. ALUMINUM MONUMENT AS THE SECTION CORNER MONUMENT FOR THE N<sup>1</sup>/<sub>4</sub> OF SECTION 28-87N-14W. POSITION OF SAID SECTION CORNER MONUMENT WAS PRESERVED BY REDUNDANT R.T.K. G.P.S. TECHNIQUES. AFTER OVERLAY PROJECT WAS COMPLETED, A CONCRETE NAIL WAS SET AT THE SAID PRESERVED POSITION AND CHECKED USING R.T.K. G.P.S. TECHNIQUES. ACCEPTED CONCRETE NAIL AS THE NEW SECTION CORNER MONUMENT FOR THE N<sup>1</sup>/<sub>4</sub> OF SECTION 28-87N-14W. THIS CORNER CERTIFICATE WAS PREPARED BECAUSE THE SECTION CORNER MONUMENT OF RECORD HAS CHANGED.

**PLAN - VIEW**



	I hereby certify that this Land Surveying document was prepared by me or under my direct personal supervision and that I am a duly licensed Professional Land Surveyor under the laws of the State of Iowa.		Corner to be Indexed	
	Signature:  Anthony F. Hildreth		Corner	
	Date: <u>May 8, 2019</u> Lic. No. <u>21993</u>		N <sup>1</sup> / <sub>4</sub>	
	My license renewal date is December 31, 2019.		Sec. Twp. Range	
	Pages or sheets covered by this seal. <u>1</u>		28 87N 14W	
		Drawn by: <u>A.F.H.</u>		