

PREPARED BY
AND RETURN THIS ORIGINAL DOCUMENT TO:
ANTHONY F. HILDRETH
IOWA DEPARTMENT OF TRANSPORTATION
DISTRICT ONE OFFICE
1020 SOUTH 4TH STREET
AMES, IOWA 50010
PHONE 515-239-1593

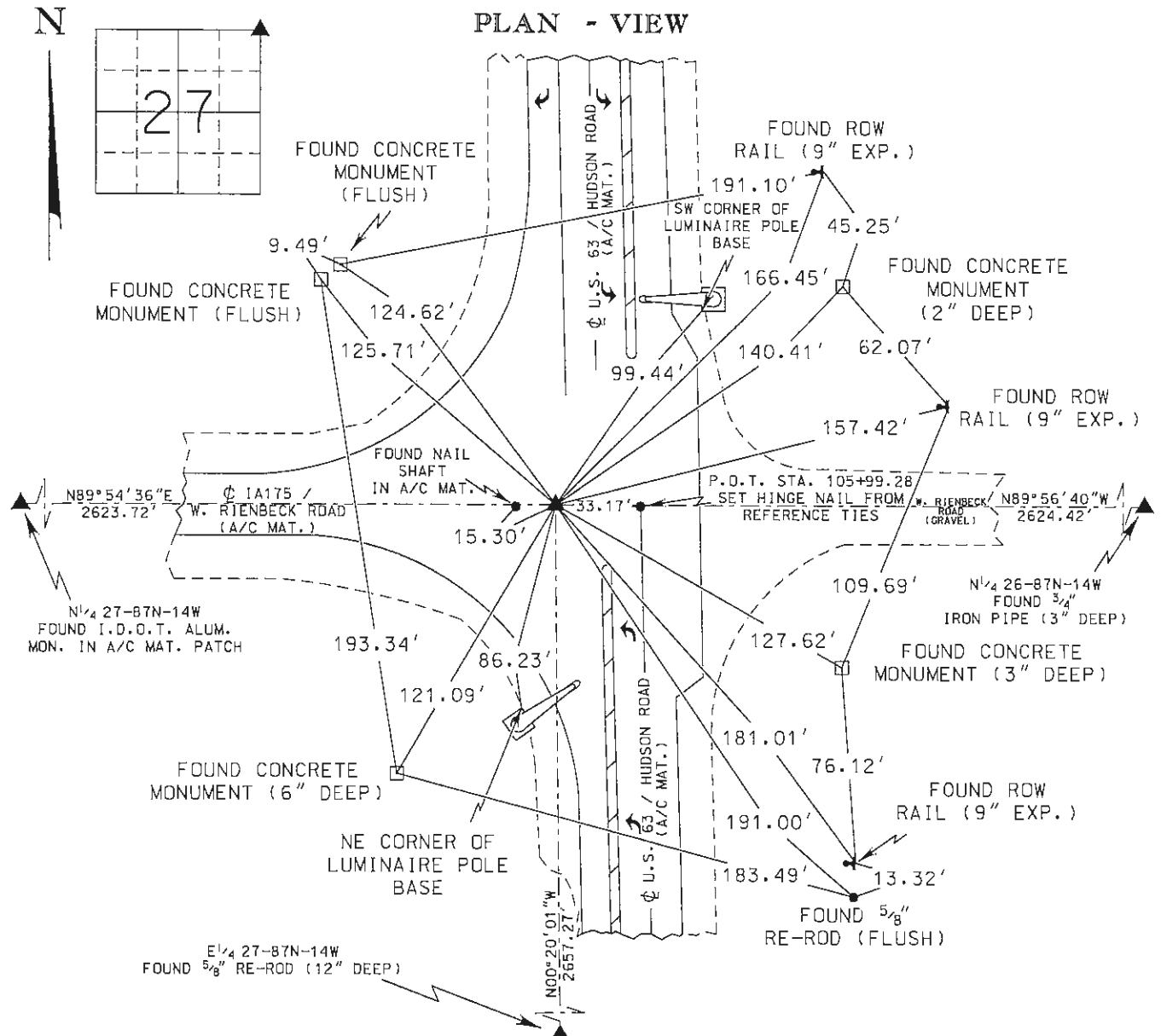
RESERVED FOR COUNTY RECORDER'S USE

UNITED STATES PUBLIC LAND SURVEY CORNER CERTIFICATE

Land Survey Monument(s) situated in Section 27, Township 87 North, Range 14 West, of the Fifth Principal Meridian, BLACK HAWK County, Iowa.

Previously recorded in BOOK 336 PAGE 555 in the County Recorder's Office.

Monument Description and Remarks: FOUND A NAIL SHAFT IN THE ASPHALT SURFACE AT THE INTERSECTION OF IA175 AND U.S. 63. NAIL SHAFT FIT REFERENCE TIE DISTANCES OF RECORD FOUND ON A U.S. PUBLIC LAND CORNER CERTIFICATE PREPARED BY PAUL H. HELLAND (BOOK 336 PAGE 555) VERY WELL. AFTER FURTHER INVESTIGATION, WHAT WAS LEFT OF THE SECTION CORNER MONUMENT OF RECORD, FROM SAID CORNER CERTIFICATE, DID NOT MATCH DISTANCES OBTAINED FROM TWO CORNERSTONE PLATS PREPARED BY MARION L. MILLER (FOR I.D.O.T. (SEE NEXT PAGE)



	I hereby certify that this Land Surveying document was prepared by me or under my direct personal supervision and that I am a duly licensed Professional Land Surveyor under the laws of the State of Iowa.		Corner to be Indexed
	Signature: <u>Anthony F. Hildreth</u>		Corner
	Date: <u>October 23, 2017</u> Lic. No. <u>21993</u>		NE COR.
	My license renewal date is December 31, 2017.		Sec. Twp. Range
	Pages or sheets covered by this seal. <u>1 OF 3</u>		27 87 14
			Drawn by: <u>A.F.H.</u>



PREPARED BY
AND RETURN THIS ORIGINAL DOCUMENT TO:
ANTHONY F. HILDRETH
IOWA DEPARTMENT OF TRANSPORTATION
DISTRICT ONE OFFICE
1020 SOUTH 4TH STREET
AMES, IOWA 50010
PHONE 515-239-1593

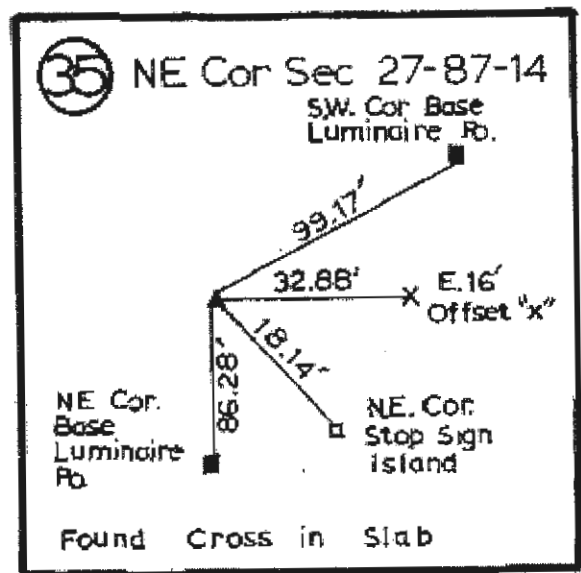
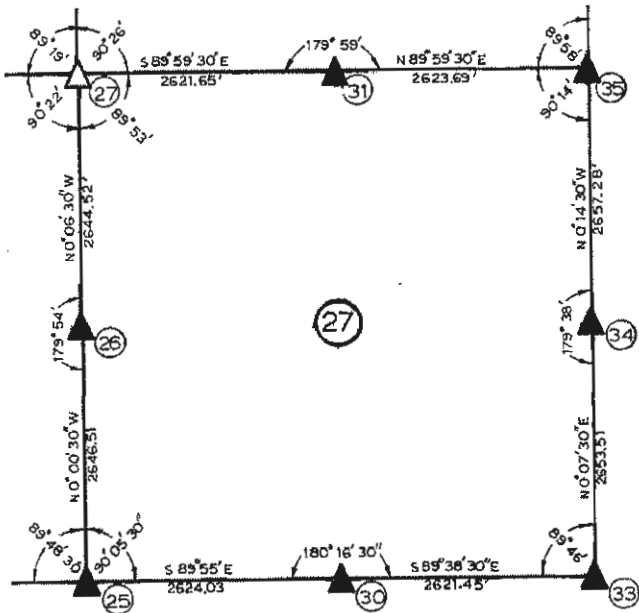
RESERVED FOR COUNTY RECORDER'S USE

UNITED STATES PUBLIC LAND SURVEY CORNER CERTIFICATE

Land Survey Monument(s) situated in Section 27, Township 87 North, Range 14 West, of the Fifth Principal Meridian, BLACK HAWK County, Iowa.
Previously recorded in BOOK 336 PAGE 555 in the County Recorder's Office.

CONTINUED FROM PAGE ONE

U.S. 63 PROJECT FN-63-6(2)--21-07, PREPARED ON JAN. 18, 1970) AND CHARLES C. BABBITT (FOR I.D.O.T. 1A175 PROJECT FN-175-9(12)--21-07, PREPARED ON MAY 7, 1976) TO THE N¹/₄ AND E¹/₄ OF SECTION 27-87N-14W AND THE N¹/₄ OF SECTION 26-87N-14W. AFTER EXAMINING AS-BUILT GRADING AND PAVING PLANS FOR I.D.O.T. PROJECT FN-63-6(2)--21-07, WHAT WAS LEFT OF THE SECTION CORNER MONUMENT OF RECORD DID NOT FIT DISTANCE OR ANGLE TO THE SOUTHERLY CENTERLINE OF U.S. 63. THEREFORE, DID NOT ACCEPT FOUND NAIL SHAFT AS THE SECTION CORNER MONUMENT. TWO SEARCH POINTS WERE ESTABLISHED. ONE SEARCH POINT WAS CALCULATED AT THE AVERAGE OF THE DISTANCE INTERSECTIONS OF THE SAID N¹/₄ & E¹/₄ OF SECTION 27 AND THE N¹/₄ OF SECTION 26 FOUND ON THE SAID TWO CORNERSTONE PLATS. A SECOND SEARCH POINT WAS CALCULATED USING THE RELATED C INFORMATION OBTAINED FROM SAID AS-BUILT PLAN FOR I.D.O.T. PROJECT FN-63-6(2)--21-07. THESE TWO SEARCH POINTS WERE 0.50' APART. DUG A 2'Wx2'Lx0.7'DEEP HOLE AT THE AVERAGE OF THESE TWO SEARCH POINTS DOWN TO THE CONCRETE, SEARCHING FOR EITHER A CUT "X" OR LEAD PLUG OF RECORD. NOTHING WAS FOUND BUT RUBBILIZED CONCRETE. SET A "MAG" NAIL ON LINE AND EQUIDISTANT, BETWEEN THE TWO SEARCH POINTS, IN THE ASPHALT PATCH AND ACCEPTED THIS AS THE SECTION CORNER MONUMENT. THIS CORNER CERTIFICATE WAS PREPARED BECAUSE THE SECTION CORNER MONUMENT OF RECORD HAS CHANGED.



CLIPS FROM CHARLES C. BABBITT
CORNERSTONE PLAT

Corner to be Indexed		
Corner		
NE COR.		
Sec.	Twp.	Range
27	87	14
Drawn by: A.F.H.		



RESERVED FOR COUNTY RECORDER'S USE-

Land Survey Monument(s) situated in Section 27, Township 87 North, Range 14 West, of the Fifth Principal Meridian, **BLACK HAWK** County, Iowa.
Previously recorded in BOOK 336 PAGE 555 in the County Recorder's Office.

Diagram showing a traverse with points (18), (19), (20), (21), (22), (23), (24), (25), and (27). The diagram includes bearings and distances for several segments.

- Segment (18)-(19): Bearing $S 89 \frac{1}{2}^{\circ} E$, Distance 2023.04
- Segment (19)-(20): Bearing $S 74^{\circ} 45' E$, Distance 2624.85
- Segment (20)-(21): Bearing $S 74^{\circ} 45' E$, Distance 2624.85
- Segment (21)-(22): Bearing $S 74^{\circ} 45' E$, Distance 2624.85
- Segment (22)-(23): Bearing $S 74^{\circ} 45' E$, Distance 2624.85
- Segment (23)-(24): Bearing $S 74^{\circ} 45' E$, Distance 2624.85
- Segment (24)-(25): Bearing $S 74^{\circ} 45' E$, Distance 2624.85
- Segment (25)-(26): Bearing $S 74^{\circ} 45' E$, Distance 2624.85
- Segment (26)-(27): Bearing $S 74^{\circ} 45' E$, Distance 2624.85

19 N.E. CORNER
SEC. 27-87-14

Diagram showing a central point labeled "LEAD PLUG" with lines radiating to various points labeled "C.M." (Center of Mass) and "R.P." (Reference Point). Measurements are provided for several points:

- Top-left: 84.38
- Top-right: 84.15
- Bottom-left: 46.85
- Bottom-right: 57.75
- Far right: 38.25
- Bottom-right (near R.P.): 55.85

Other labels include "U.S. #63" and "38".

FOUND LEAD PLUG

Corner to be Indexed		
Corner		
NE COR.		
Sec.	Twp.	Range
27	87	14
Drawn by: <u>A.F.H.</u>		