

PREPARED BY
AND RETURN THIS ORIGINAL DOCUMENT TO:
ANTHONY F. HILDRETH
IOWA DEPARTMENT OF TRANSPORTATION
DISTRICT ONE OFFICE
1020 SOUTH 4TH STREET
AMES, IOWA 50010
PHONE 515-239-1593

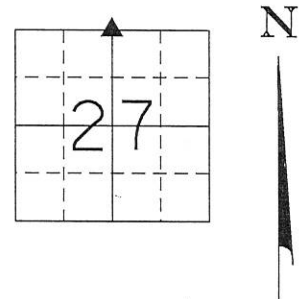
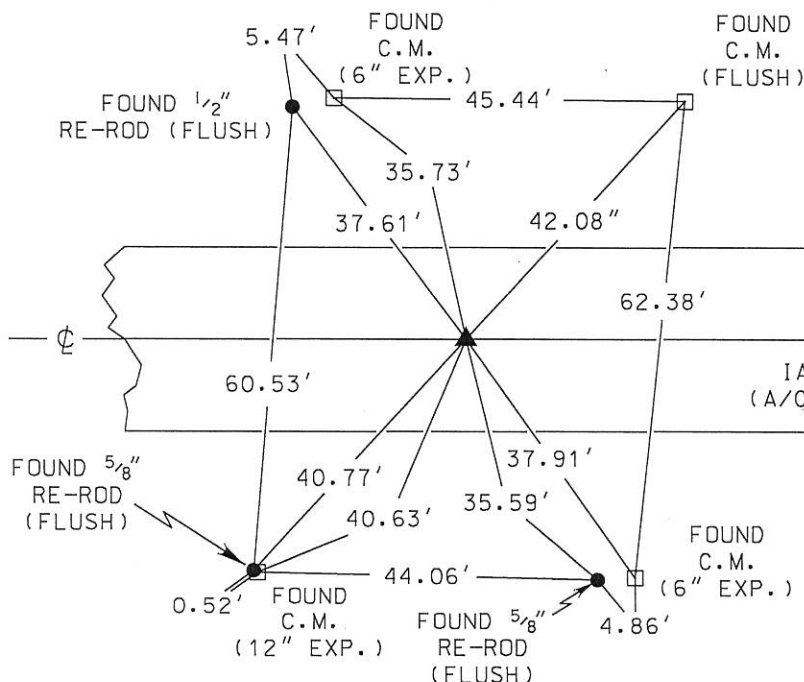
UNITED STATES PUBLIC LAND SURVEY CORNER CERTIFICATE

Land Survey Monument(s) situated in Section 27, Township 87 North, Range 14 West, of the Fifth Principal Meridian, BLACK HAWK County, Iowa.

Previously recorded in BOOK 318 PAGE 821 in the County Recorder's Office.

Monument Description and Remarks: BEFORE A/C MAT. OVERLAY FOR I.D.O.T. PROJECT STPN-175-9(22)--2J-38 AN I.D.O.T. ALUMINUM MONUMENT WAS FOUND BY USING A U.S.P.L.S. CORNER CERTIFICATE PREPARED BY LEON H. CORNELIS (BOOK 318 PAGE 821). ACCEPTED I.D.O.T. ALUMINUM MONUMENT AS THE SECTION CORNER MONUMENT FOR THE N¹/₄ OF SECTION 27-87N-14W. POSITION OF SAID SECTION CORNER MONUMENT WAS PRESERVED BY REDUNDANT R.T.K. G.P.S. TECHNIQUES. AFTER OVERLAY PROJECT WAS COMPLETED, A CONCRETE NAIL WAS SET AT THE SAID PRESERVED POSITION AND CHECKED USING R.T.K. G.P.S. TECHNIQUES. ACCEPTED CONCRETE NAIL AS THE NEW SECTION CORNER MONUMENT FOR THE N¹/₄ OF SECTION 27-87N-14W. THIS CORNER CERTIFICATE WAS PREPARED BECAUSE THE SECTION CORNER MONUMENT OF RECORD HAS CHANGED.

PLAN - VIEW



NOTE
SECTION CORNER IS CROSS
TIED W/ NORTH C.M.S AND
SOUTH 5/8\"/>



I hereby certify that this Land Surveying document was prepared by me or under my direct personal supervision and that I am a duly licensed Professional Land Surveyor under the laws of the State of Iowa.

Signature: [Signature]
Anthony F. Hildreth

Date: May 8, 2019 Lic. No. 21993
My license renewal date is December 31, 2019.
Pages or sheets covered by this seal. 1

| Corner to be Indexed | | |
|-------------------------------|------|-------|
| Corner | | |
| N ¹ / ₄ | | |
| Sec. | Twp. | Range |
| 27 | 87N | 14W |
| Drawn by: <u>A.F.H.</u> | | |