

ENTERED
Books
I & II
2-20-96

Prepared by Leon H. Cornelis Central Ia. Trans. Center 1020 S. 4th St. Ames, IA 50010 Phone 515-239-1231

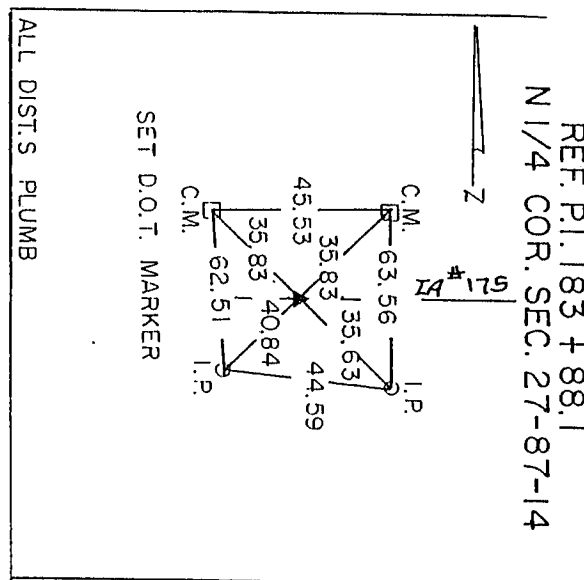
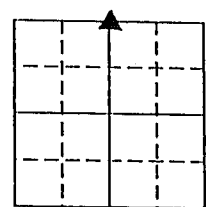
UNITED STATES PUBLIC LAND SURVEY CORNER CERTIFICATE OF

Land Survey Monuments situated in Section 27, Township 87 North, Range 14 West, of
the Fifth Principal Meridian, BLACKHAWK County, Iowa.

Previously recorded in N.A. in the County Recorder's Office.

Monument Description and Remarks: Set D.O.T. aluminum marker over hinge nail
after A.C. resurfacing.

PLAN - VIEW



I hereby certify that the survey work was completed and this certificate was prepared by me or under my direct personal supervision and that I am a duly registered land surveyor under the laws of the state of Iowa.

Signature: Leon H. Cornelis
Leon H. Cornelis

Date: Dec 4, 1995 Reg. No. 5685
My registration renewal date is Dec. 31, 1996.



Corners	Section	Twp.	Range
N 1/4	27	87N	14W

MISC. BK. 318 p. 821