



PREPARED BY
AND RETURN THIS ORIGINAL DOCUMENT TO:
JON MYERS PLS
IOWA DEPARTMENT OF TRANSPORTATION
DISTRICT 1 OFFICE
1020 SOUTH 4TH STREET
AMES, IOWA 50010
PHONE 515-239-1593

RESERVED FOR COUNTY RECORDER'S USE



Doc ID: 010406510001 Type: GEN
Recorded: 03/14/2022 at 09:10:32 AM
Fee Amt: \$7.00 Page 1 of 1
Black Hawk County Iowa
SANDIE L. SMITH RECORDER

File **2022-00018040**

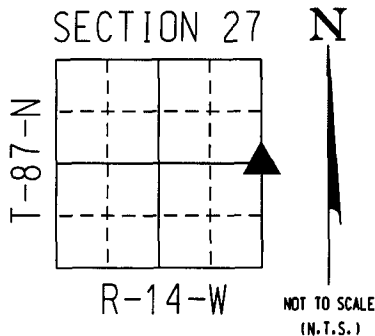
UNITED STATES PUBLIC LAND SURVEY CORNER CERTIFICATE

Land Survey Monument(s) situated in Section 27, Township 87 North, Range 14 West, of the Fifth Principal Meridian, BLACKHAWK County, Iowa. IDOT Project NHSX-063-5(72)--3H-86
Previously recorded in BK 321 PG 842 in the
County Recorder's Office.

E 1/4 CORNER 27-87-14:

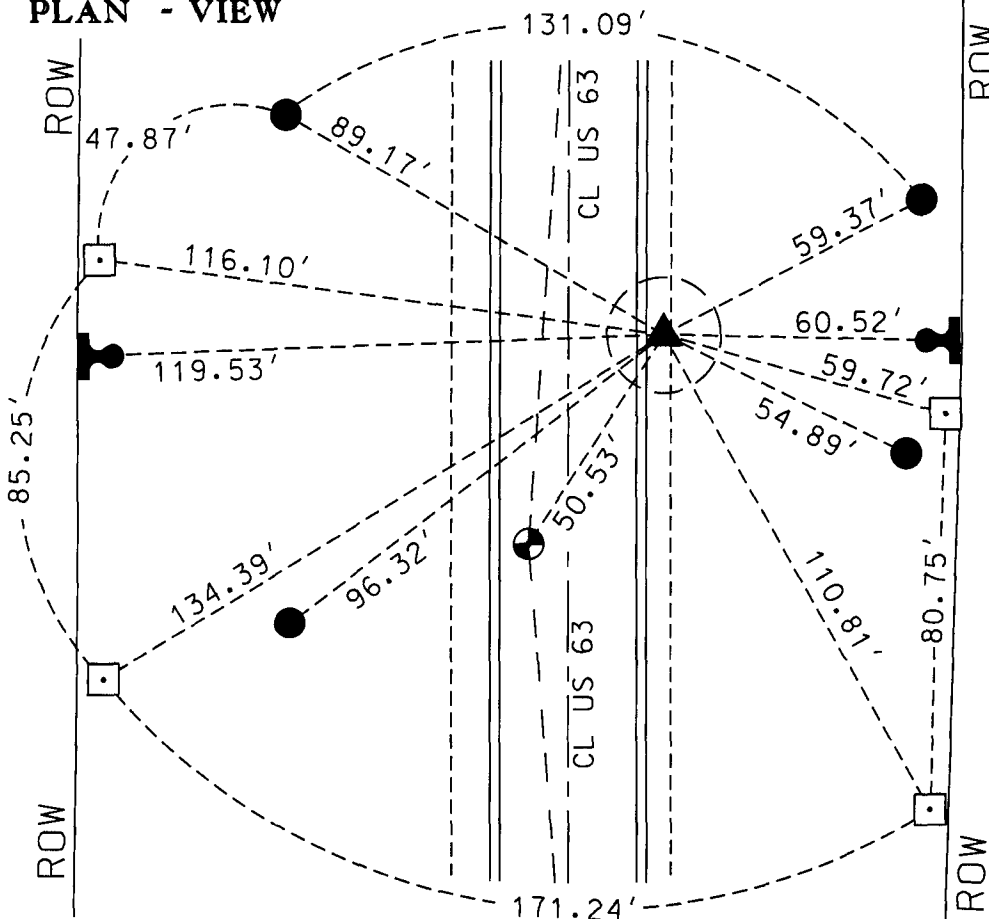
DURING THE INTIAL FIELD SEARCH A 1/2 REROD WITH CAP #6505 WAS FOUND BY USING A U.S.P.L.S. CORNER CERTIFICATE PREPARED BY PAUL HELLAND. HOWEVER, AFTER COMPARING THIS CORNER TO PRIOR IDOT RETRACEMENTS IN THIS AREA, DISCOVERED THAT THIS CORNER MONUMENT WAS INCORRECTLY USED FOR THE E 1/4 SECTION CORNER. USED INFORMATION FROM A LAND CORNER STONE SURVEY BY CHARLES BABBIT DATED MAY 7, 1976 FROM IDOT PROJECT FN-175-9(12)--21-07 TO COMPUTE LOCATION OF E 1/4 CORNER. STAKED OUT THE SEARCH POINT - DUG DOWN AND FOUND A 3/4 REROD - 12" DEEP - 19.55' EAST OF CL US HWY 63. THIS CORNER MATCHES THE MONUMENT AND POSITION FOUND ON SAID LAND CORNER STONE SURVEY AND ACCEPTED THE 3/4 REROD AS THE E 1/4 CORNER.

A NEW CORNER CERTIFICATE IS CREATED BECAUSE THIS SURVEYOR HAS ACCEPTED A DIFFERENT MONUMENT THAN THE CERTIFICATE OF RECORD HAS SHOWN FOR THIS SECTION CORNER.

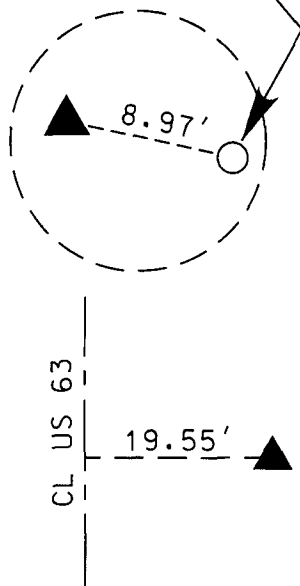


COORDINATE VALUE WAS ESTABLISHED UTILIZING NAD83 (2011)(EPOCH 2010) DATUM USING THE IOWA REGIONAL COORDINATE SYSTEM ZONE 5 PROJECTION IN U.S. SURVEY FEET
E 1/4 CORNER - #8029
N - 8779410.3000
E - 15444332.4230

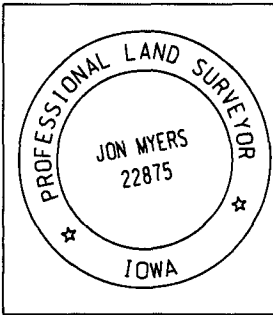
PLAN - VIEW



Found 1/2 rerod with cap #6505 set and incorrectly referenced as the section corner: corner certificate recorded in misc. book 321 at page 842 by Paul Helland.



SEC COR IS NOT "X" TIED		
Corner to be Indexed		
E 1/4 COR		
Sec.	Twp.	Range
27	87	14
Drawn by: JMM		



I hereby certify that this Land Surveying document was prepared by me or under my direct personal supervision and that I am a duly licensed Professional Land Surveyor under the laws of the State of Iowa.
Signature: [Signature]
Jon Myers
Date: March 01, 2022 Lic. No. 22875
My license renewal date is December 31, 2022.
Pages or sheets covered by this seal. 1

- = FND CORNER
- = SET 5/8 REROD
- = FND CONC. MON.
- ⌋ = FD IDOT RAIL
- ⊕ = FD/SET IDOT PI