

Reserved for County Recorder's use

2025-05606

RECORDED: 04/28/2025 11:01:44 AM

RECORDING FEE: \$7.00

REVENUE TAX: \$

COMBINED FEE: \$7.00

SANDIE L. SMITH, RECORDER
BLACK HAWK COUNTY, IOWA

* Kyle J Helland, 6109 Chancellor Drive, Cedar Falls, Iowa 50613-6916, (319)-266-0161

UNITED STATES PUBLIC LAND SURVEY CORNER CERTIFICATE OF

LAND SURVEY MONUMENTS SITUATED IN SECTION NO 27, TOWNSHIP NO 87 NORTH, RANGE
NO 14 WEST OF THE FIFTH PRINCIPAL MERIDIAN, BLACK HAWK COUNTY, IOWA
PREVIOUSLY RECORDED IN _____ N/A

(SHOW REASON FOR PREPARING THIS CERTIFICATE, THE EVIDENCE AND DETAILED PROCEDURES USED IN ESTABLISHING THE
CORNER POSITIONS AND MONUMENTATION FOUND OR PLACED)

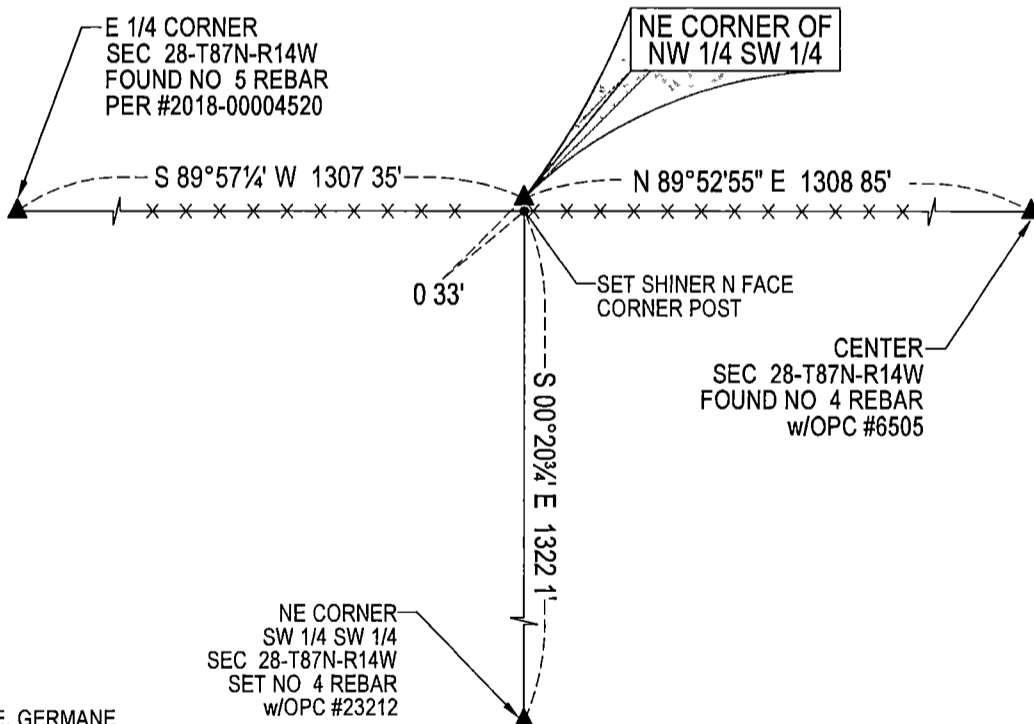
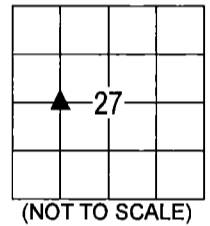
MONUMENT DESCRIPTION AND REMARKS

NO USPLSCC ON FILE. SURVEY COMPLETED IN THE NW 1/4 & SW 1/4 OF SEC 27-T87N-R14W

→ **NE CORNER OF THE NW 1/4 SW 1/4:** NO BLACK COUNTY ENGINEER TIES ARE AVAILABLE NOR ANY OTHER PUBLIC DOCUMENTATION OF THE HISTORY AND PERPETUATION OF CORNER WAS AVAILABLE. SEARCHED AREA WITH MAGNETIC DETECTOR AND PROBED AROUND EXISTING OCCUPIED CORNER POST, NOTHING FOUND THEREFORE SET NO 4 REBAR w/OPC #23212 ON NORTH SIDE OF EXISTING OCCUPIED CORNER POST AND UTILIZED SAID SET NO 4 REBAR w/OPC #23212 AS CORNER

PLAN VIEW

(SHOW A MINIMUM OF THREE REFERENCE TIES TO DURABLE PHYSICAL OBJECTS, RELEVANT MONUMENTS AND PHYSICAL CONDITIONS THAT WILL ENABLE RECOVERY OF THE CORNER)



NO OTHER DURABLE, GERMANE
PHYSICAL OBJECTS TO REFERENCE TO

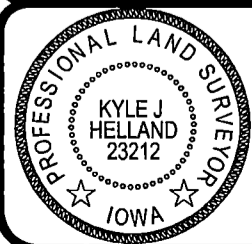
SEE ASSOCIATED PLAT OF SURVEY
FOR "RECORDED AS" INFORMATION

(BEARINGS ARE ASSUMED)



HELLAND ENGINEERING & SURVEYING, LTD
6109 Chancellor Drive
Cedar Falls, Iowa 50613-6916
(319)-266-0161

BRASS TAG = 4d NAIL & 13/16"Ø BRASS TAG DRAWN BY CDR
SHINER = 1"Ø STEEL SHINER w/MASONRY NAIL
OPC = PLASTIC CAP (O=ORANGE, R=RED, Y=YELLOW)
(00) RECORDED AS FILE NAME 24-263-51 DWG



I hereby certify that this land surveying document was prepared
and the related survey work was performed by me or under my
direct personal supervision and that I am a duly licensed
Professional Land Surveyor under the laws of the State of Iowa.
Kyle J Helland 04/28/2025
Kyle J Helland
License Number 23212
My license renewal date is December 31, 2025
All pages or sheets are covered by this seal except

LIST CORNERS TO BE INDEXED

CORNER	SECTION / TOWNSHIP / RANGE		
NE COR NW 1/4 SW 1/4	27	87N	14W
SE COR SW 1/4 NW 1/4	27	87N	14W
SW COR SE 1/4 NW 1/4	27	87N	14W
NW COR NE 1/4 SW 1/4	27	87N	14W