

UNITED STATES PUBLIC LAND SURVEY CORNER CERTIFICATE OF

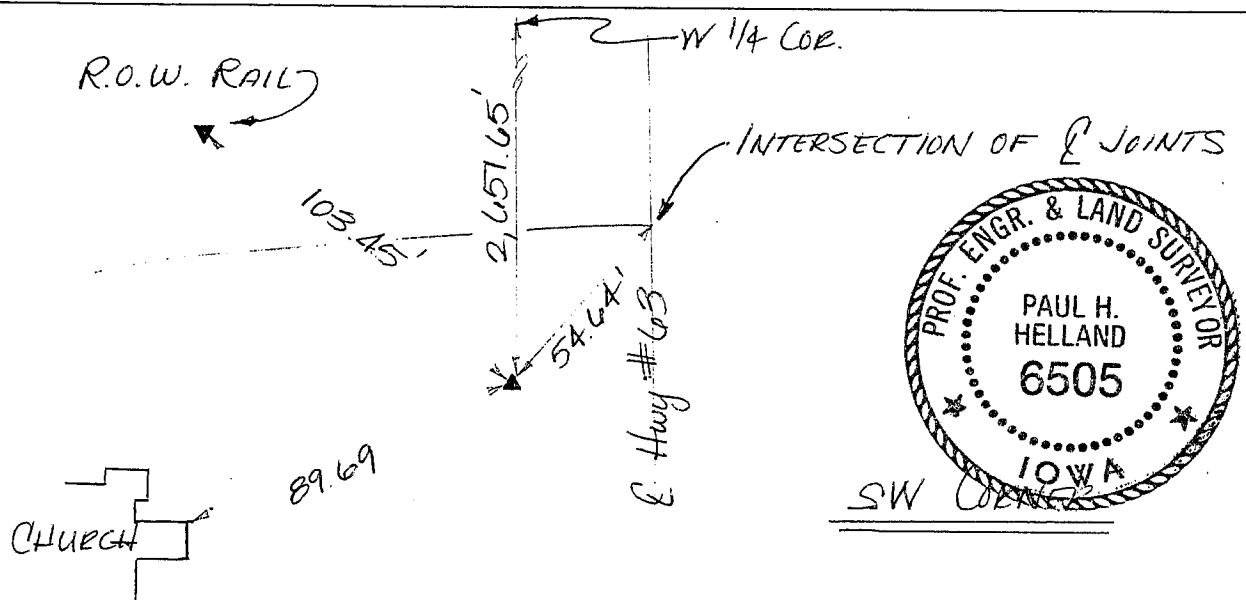
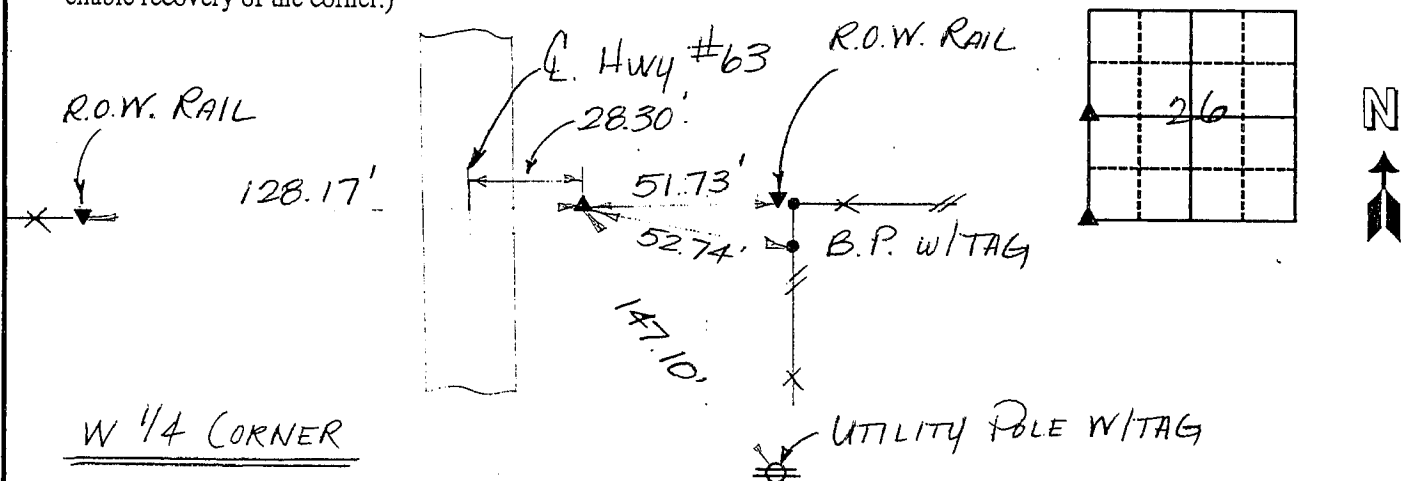
Land Survey Monuments situated in Section 26, Township 87, Range 14, of the Fifth Principal Meridian, BLACK HAWK County, Iowa.
Previously recorded in Book _____, Page _____.

(Show reason for preparing this certificate, the evidence and detailed procedures used in establishing the corner positions and monumentation found or placed.)

Monument Description and Remarks: SURVEY DONE IN SW 1/4 SEC. 26.
W 1/4 COR. → FOUND NAIL W/FLAGGING 0.4' DEEP, SET PIN
SW COR. → FOUND 1/2" REBAR IN 4" CONCRETE MONUMENT.

PLAN - VIEW

(Show a minimum of three reference ties to durable physical objects, relevant monuments and physical conditions that will enable recovery of the corner.)



I HEREBY CERTIFY THAT THIS PLAT, MAP, SURVEY OR REPORT WAS MADE BY ME OR UNDER MY DIRECT PERSONAL SUPERVISION AND THAT I AM A DULY REGISTERED LAND SURVEYOR UNDER THE LAWS OF THE STATE OF IOWA.
Paul H. Helland DATE 8/19/96
PAUL H. HELLAND, P.E. & R.L.S. IOWA REGISTRATION NO. 6505
MY REGISTRATION EXPIRES DECEMBER 31, 1997

HES
HELLAND ENGINEERING & SURVEYING, LTD.
THUNDER RIDGE BANK BUILDING
2322 WEST 1ST ST., SUITE B
CEDAR FALLS, IOWA 50613
319-266-0161

List Corners to be Indexed

Corners	Section	Twp	Range
W 1/4	26	87	14
SW	26	87	14

MISC. BK. 321 p. 842

Eng.