

PROOF

FILED FOR RECORD JUN 20, 2002, AT 11:30 A.M. FEE 1-5.00/

COMPARED

*Patricia A. Sess*

BLACK HAWK COUNTY RECORDER

TERRY D VAN LANINGHAM 120 2ND ST SW WAVERLY IA 50677

PREPARED BY TERRY D. VAN LANINGHAM, PLS, INC. \* 120 2ND STREET, SW., WAVERLY, IOWA \* (319)352-0801

UNITED STATES PUBLIC LAND SURVEY CORNER CERTIFICATE  
OFLand Survey Monuments situated in Section 26, Township 87 N, Range 14 W,  
of the Fifth Principal Meridian, BLACK HAWK County, Iowa. Previously recorded  
in \_\_\_\_\_ in County Recorder's Office.

(book, page, document number, etc.)

(Show reason for preparing this certificate, the evidence and detailed procedures used in establishing the corner positions and  
monumentation found or placed.)

## Monument Description and Remarks:

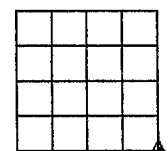
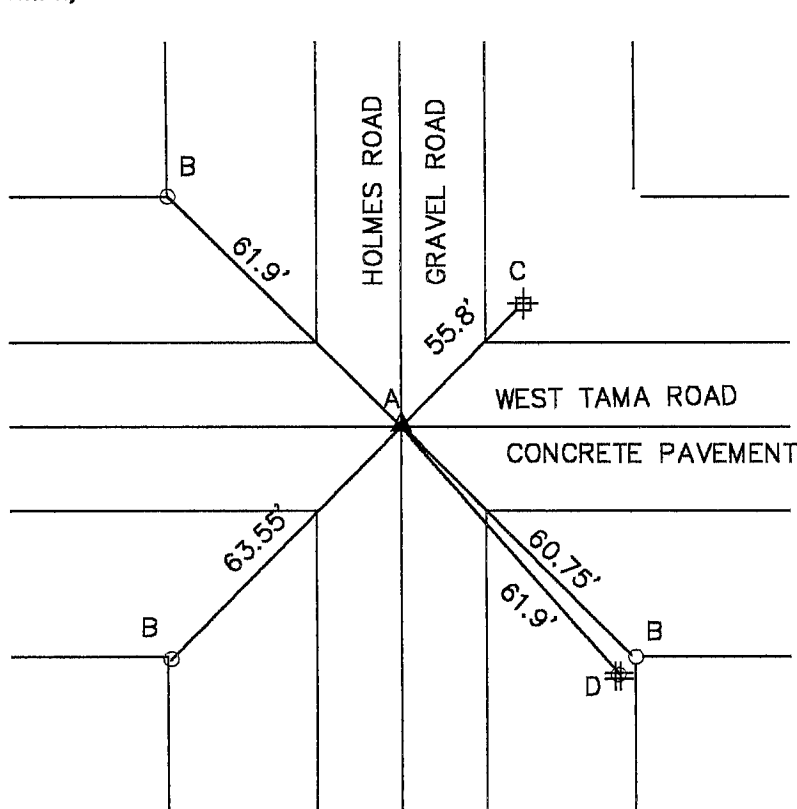
A - FOUND REBAR IN CENTER LINE - CENTER LINE COUNTY ROADS

B - "x" NAILS ON FENCE CORNER POST

C - STREET SIGN - W. TAMA ROAD AND HOLMES ROAD

D - "x" NAILS IN POWER POLE

## PLAN VIEW

(Show a minimum of three reference ties to durable physical objects, relevant monuments and physical conditions that will  
enable recovery of the corner.)

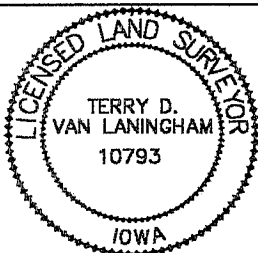
SECTION 26

SE CORNER  
26-87-14I hereby certify that this land surveying document was prepared and  
the related survey work was performed by me or under my direct  
personal supervision and that I am a duly licensed Land Surveyor  
under the laws of the State of Iowa.*Terry D. Van Laningham* *June 19, 2002*  
Terry D. Van Laningham, PLS Date:  
License number 10793

My registration renewal date is December 31, 2003.

Pages or sheets covered by this seal:  
THIS SHEET ONLY

SEAL



## List Corners to be Indexed

| Corners   | Section | Township | Range |
|-----------|---------|----------|-------|
| SE CORNER | 26      | 87 N     | 14 W  |

TERRY D. VAN LANINGHAM, PLS, INC.

310 15TH AVE., NW

WAVERLY, IOWA

(319) 352 - 2132