

PREPARED BY TERRY D. VAN LANINGHAM, PLS, INC. \* 120 2ND STREET, SW., WAVERLY, IOWA \* (319) 352-0801

UNITED STATES PUBLIC LAND SURVEY CORNER CERTIFICATE  
OF

Land Survey Monuments situated in Section 26, Township 87 N, Range 14 W,  
of the Fifth Principal Meridian, BLACK HAWK County, Iowa. Previously recorded  
in MISC. Book 332 p. 933 in County Recorder's Office.

(book, page, document number, etc.)

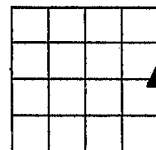
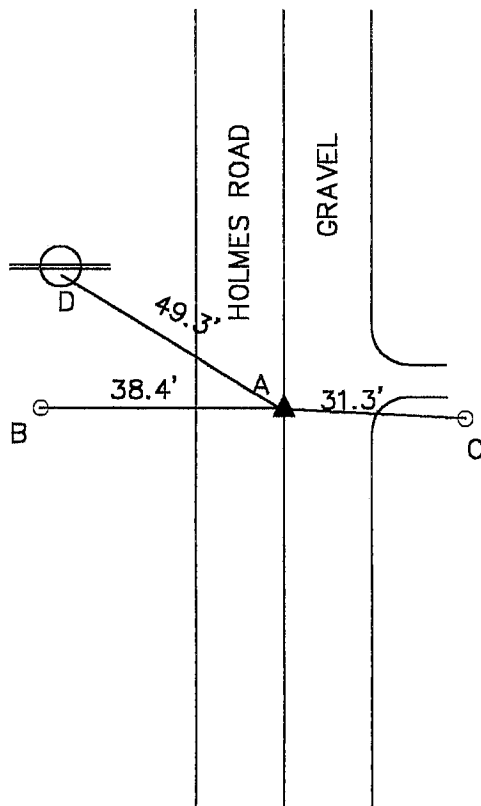
(Show reason for preparing this certificate, the evidence and detailed procedures used in establishing the corner positions and  
monumentation found or placed.)

Monument Description and Remarks:

- A - FOUND 1/2 INCH REBAR CENTER OF THE ROAD  
B - STEEL FENCE POST  
C - FENCE CORNER POST  
D - FD PLASTIC SURVEY TAG IN POWER POLE

PLAN VIEW

(Show a minimum of three reference ties to durable physical objects, relevant monuments and physical conditions that will  
enable recovery of the corner.)



SECTION 26

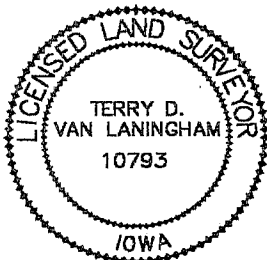
E 1/4 CORNER  
26 - 87 - 14

I hereby certify that this land surveying document was prepared  
and the related survey work was performed by me or under my  
direct personal supervision and that I am a duly licensed Land  
Surveyor under the laws of the State of Iowa.

Terry D. Van Laningham June 10, 2002  
Terry D. Van Laningham, PLS Date:  
License number 10793  
My registration renewal date is December 31, 2003.  
Pages or sheets covered by this seal:

THIS SHEET ONLY

SEAL



List Corners to be Indexed

Corners	Section	Township	Range
E 1/4 COR.	26	87N	14W

TERRY D. VAN LANINGHAM. PLS. INC.  
610 12TH AVE., NW WAVERLY, IOWA (319) 362 - 2132