

Reserved for County Recorder's use.



Doc ID: 011885030001 Type: GEN
Recorded: 01/05/2023 at 05:39:38 PM
Fee Amt: \$7.00 Page 1 of 1
Black Hawk County Iowa
SANDIE L. SMITH RECORDER

File 2023-00009679

Jeffrey P. Helland, 6109 Chancellor Drive, Cedar Falls, Iowa 50613-6916, (319)-266-0161

UNITED STATES PUBLIC LAND SURVEY CORNER CERTIFICATE
OF

LAND SURVEY MONUMENTS SITUATED IN SECTION NO. 26, TOWNSHIP NO. 87 NORTH, RANGE NO. 14 WEST OF THE FIFTH PRINCIPAL MERIDIAN, BLACK HAWK COUNTY, IOWA.
PREVIOUSLY RECORDED IN 332 MISC 934

(SHOW REASON FOR PREPARING THIS CERTIFICATE, THE EVIDENCE AND DETAILED PROCEDURES USED IN ESTABLISHING THE CORNER POSITIONS AND MONUMENTATION FOUND OR PLACED.)

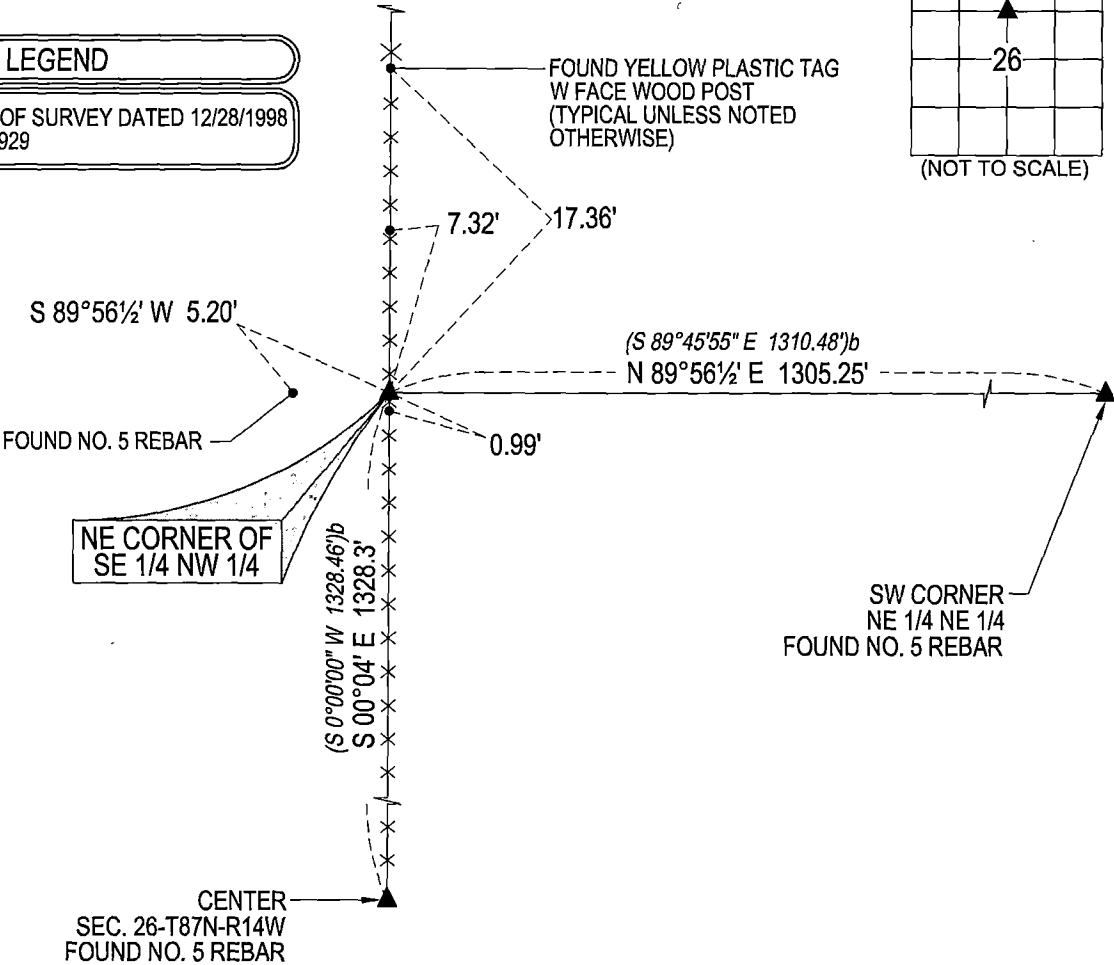
MONUMENT DESCRIPTION AND REMARKS:
MONUMENTATION AND LOCATION HAVE CHANGED. SURVEY COMPLETED IN THE NE 1/4 OF SEC. 26-T87N-R14W.

NE CORNER SE 1/4 NW 1/4: NO BLACK HAWK COUNTY ENGINEER TIES AVAILABLE. USPLSCC 332 MISC. 934 DATED 12/28/1998 CALLS FOR [SET 5/8" REBAR w/YELLOW CAP #9763, FLUSH WITH GROUND SURFACE, ON LINE AND MIDPOINT BETWEEN N 1/4 COR & CENTER OF SECTION.] LOCATION SHOWN ON SAID CORNER CERTIFICATE FALLS 5.2'± WEST OF ANCIENT OCCUPIED FENCELINE. THEREFORE SET NO. 4 REBAR w/OPC #16264 ON LINE BETWEEN SAID PREVIOUS MONUMENTATION AND FOUND SW CORNER OF THE NE 1/4 NE 1/4 AND IN SAID FENCELINE. UTILIZED SAID SET NO. 4 REBAR w/OPC #16264 AS CORNER.

PLAN VIEW

(SHOW A MINIMUM OF THREE REFERENCE TIES TO DURABLE PHYSICAL OBJECTS, RELEVANT MONUMENTS AND PHYSICAL CONDITIONS THAT WILL ENABLE RECOVERY OF THE CORNER.)

LEGEND
(0.0')b PER PLAT OF SURVEY DATED 12/28/1998
332 MISC. 929



(BEARINGS ARE ASSUMED)

HES HELLAND ENGINEERING & SURVEYING, LTD.
6109 Chancellor Drive
Cedar Falls, Iowa 50613-6916
(319)-266-0161

SHINER = 4d. NAIL & 1 5/16"Ø METAL SHINER DRAWN BY: KDA
BRASS TAG = 4d. NAIL & 13/16"Ø BRASS TAG
OPC = PLASTIC CAP (O=ORANGE, R=RED, Y=YELLOW)
(00') RECORDED AS FILE NAME: 22-265-34.DWG



I hereby certify that this land surveying document was prepared and the related survey work was performed by me or under my direct personal supervision and that I am a duly licensed Professional Land Surveyor under the laws of the State of Iowa.
Jeffrey P. Helland 1/4/2023
Jeffrey P. Helland
License Number 16264
My license renewal date is December 31, 2023.
All pages or sheets are covered by this seal except:

LIST CORNERS TO BE INDEXED			
CORNER	SECTION	TOWNSHIP	RANGE
NE COR. SE 1/4 NW 1/4	26	87N	14W
SE COR. NE 1/4 NW 1/4	26	87N	14W
SW COR. NW 1/4 NE 1/4	26	87N	14W
NW COR. SW 1/4 NE 1/4	26	87N	14W