

MISC
INDEX
MARGIN
PROOF
COMPARE

BLACK HAWK COUNTY IOWA: SS
Filed for record Apr 24, 1998, at
4:00 P.M. and recorded in Book 329
of MISC Page 840.
Recorder
Fee n/c
ENGINEER'S OFFICE

21550

County Assessor

PREPARED BY: BLACK HAWK COUNTY ENGINEERS OFFICE
316 E. FIFTH STREET, ROOM 211 WATERLOO, IOWA 50703

PH# (319) 291-2419
FAX# (319) 291-2461

SLSI 9-94
CERT 12-96

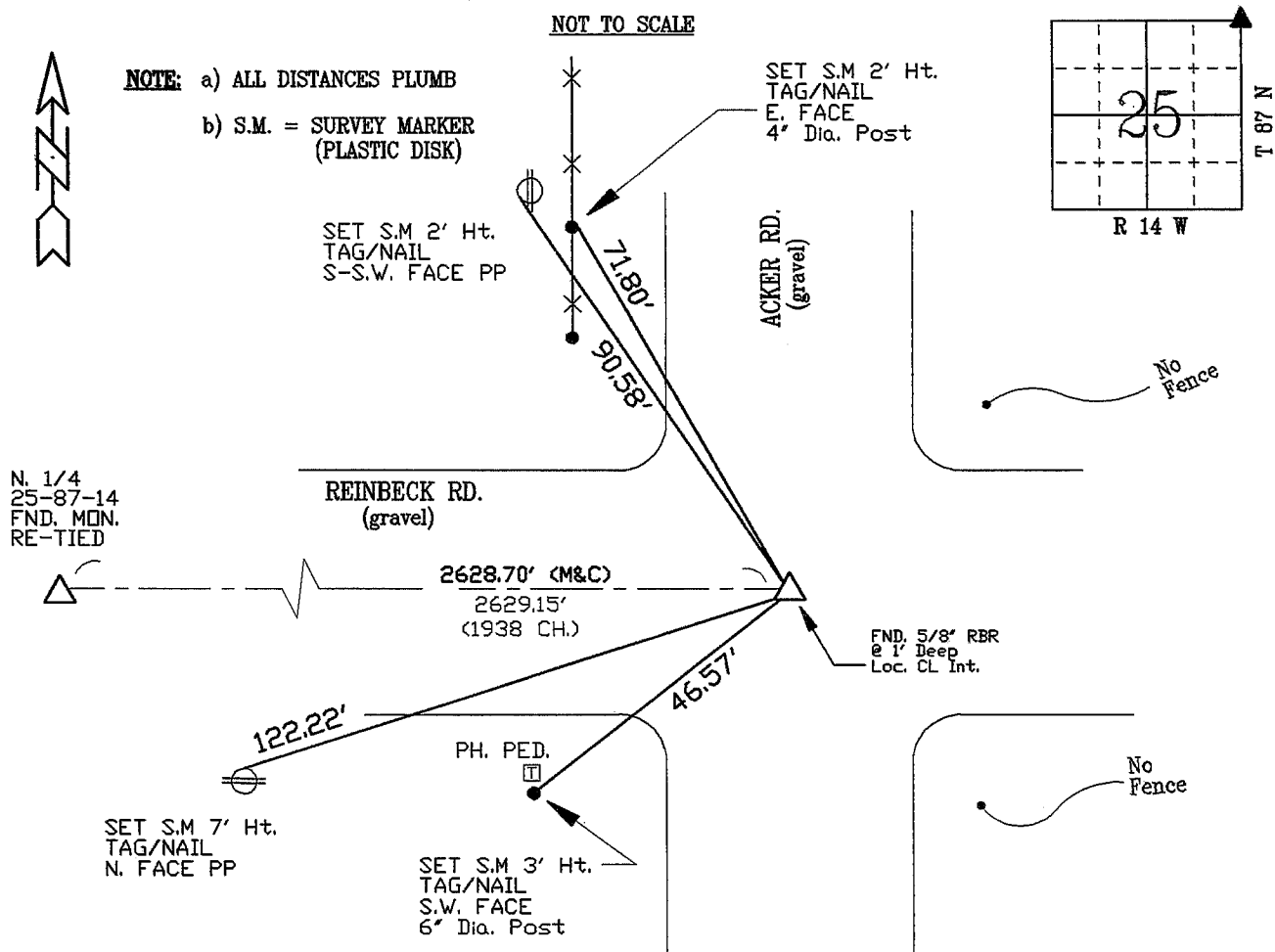
UNITED STATES PUBLIC LAND SURVEY CORNER CERTIFICATE OF
Land Survey Monuments situated in Section 25, Township 87 N,
Range 14 W, of the Fifth Principal Meridian, BLACK HAWK County, Iowa.
Previously recorded in Misc. Book N/A, Page N/A, in County Recorder's Office.

(Show reason for preparing this certificate, the evidence and detailed procedures used in establishing the corner positions and monumentation found or placed.)

Monument Description and Remarks: FOUND 5/8" REBAR @ 1' DEEP, LOCATED
CENTERLINE INTERSECTION REINBECK AND ACKER ROADS. EXIST. COUNTY TIES
TO FENCES DESTROYED. THOSE TO EXIST RCP'S (NOT UTIL.) PRIM'LY AGREE.
DIST. TO N.W. COR. SECTION @ 5258.08' EDM. vs. 5258.3 (1938 CH.) and ORIG.
GOV'T SURVEY OF 79.67 CH. (5258.22') "REBAR ACCEPTED"
RECOVERED TO ASSIST W/ LOCATING NORTH 1/4 CORNER OF SECTION.

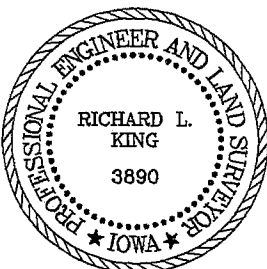
PLAN - VIEW

(Show a minimum of three reference ties to durable physical objects, relevant monuments and physical conditions that will enable recovery of the corner.)



FIELD SURVEY: G. TINKER 04/03/98
PREPARED BY: G. TINKER 04/08/98

CERTIFICATION



I hereby certify that this land surveying document was prepared and the related survey work was performed by me or under my direct personal supervision and that I am a duly licensed Land Surveyor under the laws of the State of Iowa.

Richard L. King 4/30/98 (date)
Richard L. King
License Number 3890
My license renewal date is December 31, 1999
Pages or sheets covered by this seal:
This Land Corner Certificate Only.

LIST CORNERS TO BE INDEXED

Corner	Section	Township	Range
N.E. COR.	25	87 N	14 W