

SC
MISC
INDEX
MARGIN
PROOF
COMPARE

BLACK HAWK COUNTY IOWA: SS 21549
Filed for record Apr 24, 1998, at
4:00 P.M. and recorded in Book 329
of MISC Page 839
Catherine S. Less Recorder
Fee n/c
ENGINEER'S OFFICE

PREPARED BY: BLACK HAWK COUNTY ENGINEERS OFFICE
316 E. FIFTH STREET, ROOM 211 WATERLOO, IOWA 50703

PH# (319) 291-2419 SLSI 9-94
FAX# (319) 291-2461 CERT 12-98

UNITED STATES PUBLIC LAND SURVEY CORNER CERTIFICATE OF
Land Survey Monuments situated in Section 25, Township 87 N,
Range 14 W, of the Fifth Principal Meridian, BLACK HAWK County, Iowa.
Previously recorded in Misc. Book N/A, Page N/A, in County Recorder's Office.

(Show reason for preparing this certificate, the evidence and detailed procedures used in establishing the corner positions and monumentation found or placed.)

Monument Description and Remarks: FOUND CONC. MONUMENT STAMPED 24
LOC. 7" Deep. ALL COUNTY TIES DESTROYED. FND. BY SPLITTING N. LINE 25
DIST. OF 5258.08' vs. 5258.3' of 1938 Chain. MON. LOC. 0.16' N. OF NW-NE
CORNERS LINE. HELD ON LINE @ EQUAL SPLIT PER. 1938 I.G.S. Survey.
MON. IN LINE W/ FENCE SOUTH. OLD TIES SHOW POS. WEST OF S. FENCE.
PLACED 6" L. RBR. HORIZ'LY ALONG N. FACE MON. @ 2" BELOW TOP 4" MAGN.

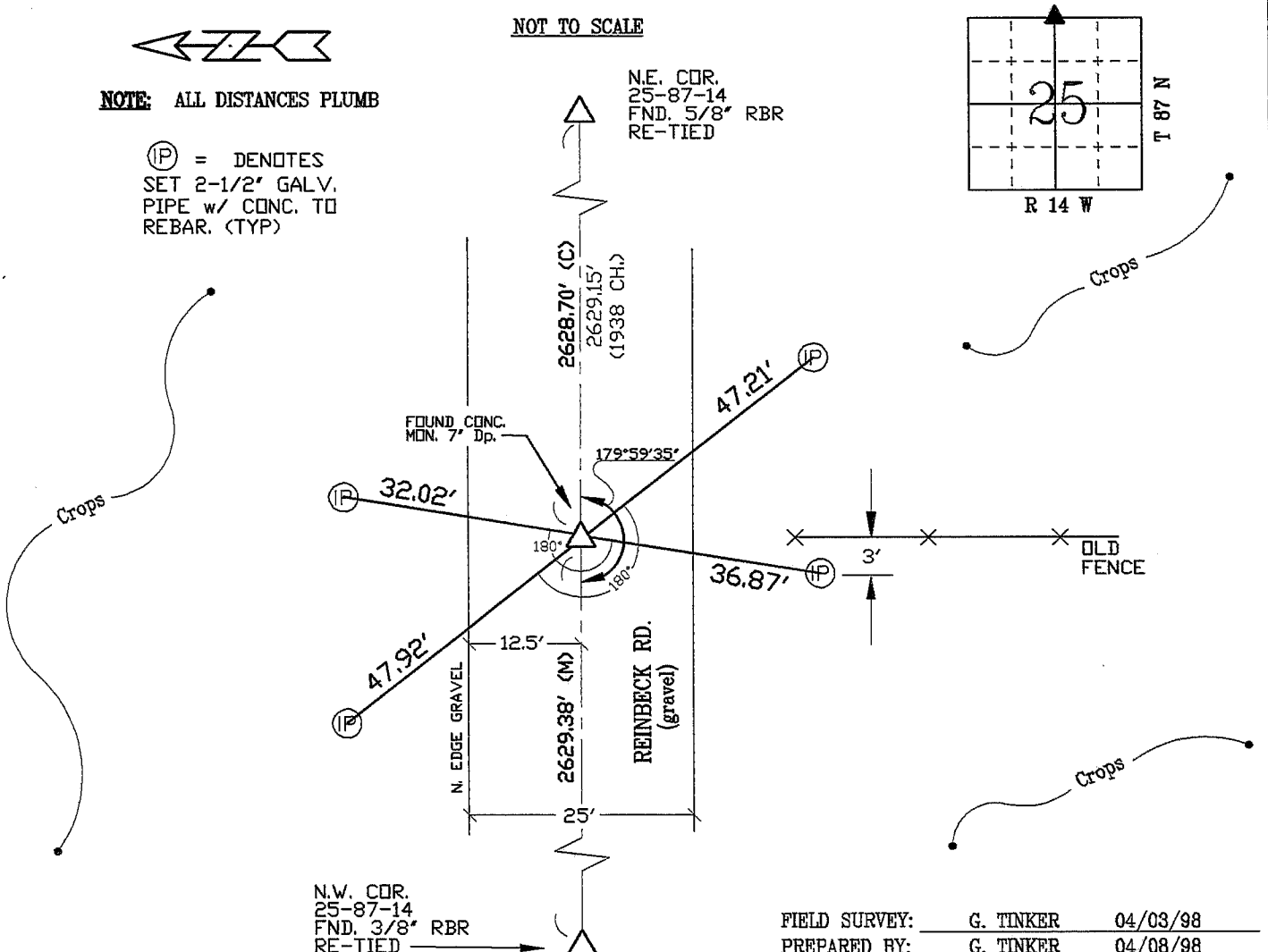
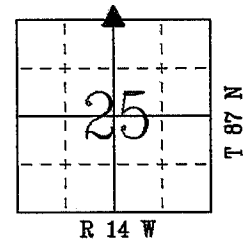
PLAN - VIEW

(Show a minimum of three reference ties to durable physical objects, relevant monuments and physical conditions that will enable recovery of the corner.)

NOT TO SCALE

NOTE: ALL DISTANCES PLUMB

(P) = DENOTES
SET 2-1/2" GALV.
PIPE w/ CONC. TO
REBAR. (TYP)



CERTIFICATION

I hereby certify that this land surveying document was prepared and the related survey work was performed by me or under my direct personal supervision and that I am a duly licensed Land Surveyor under the laws of the State of Iowa.

Richard L. King 4/30/98
Richard L. King (date)

License Number 3890

My license renewal date is December 31, 1999

Pages or sheets covered by this seal:

This Land Corner Certificate Only.

LIST CORNERS TO BE INDEXED

Corner	Section	Township	Range
N. 1/4	25	87 N	14 W

