

BLACK HAWK COUNTY ENGINEER

PAGE 1 OF 2

PREPARED BY:	BLACK HAWK COUNTY ENGINEERS OFFICE 316 E. FIFTH STREET, ROOM 211 WATERLOO, IOWA 50703	PH.# (319) 291-2419 FAX.# (319) 291-2461	SLSI 9-94 CERT 12-96
--------------	--	---	-------------------------

UNITED STATES PUBLIC LAND SURVEY CORNER CERTIFICATE OF

Land Survey Monuments situated in Section 24, Township 87 N, Range 14 W, of the Fifth Principal Meridian, BLACK HAWK County, Iowa. Previously recorded in Book N/A, Page N/A, in County Recorder's Office.

(Show reason for preparing this certificate, the evidence and detailed procedures used in establishing the corner positions and monumentation found or placed.)

Monument Description and Remarks: RECORD WPA TIES OF JAN. 1939 CALL CORNER "ON STRAIGHT LINE BETWEEN N.W. & N.E. CORNERS" AND AT "MIDWAY". NO STD. CM FOUND IN CREEK BOTTOM. REFER TO RECORD ROAD PLANS BELOW. HELD FOUND NAIL TO EAST AS C.L. GEOM. AND SECTIONLINE, AND EQUALLY SPLIT N. LINE MEASURE OF 5248.14' CREATING CORNER 1.47' N. OF STRAIGHT LINE FOR A 0°03'51" DEFL. (RT. AHEAD EAST) RESPECTIVE OF OCCUPATIONS. REFER TO P. #2 FOR SPECIFIC CORNER TIE DETAILS.

PLAN - VIEW

(Show a minimum of three reference ties to durable physical objects, relevant monuments and physical conditions that will enable recovery of the corner.)

N. 1/4 Cor. Re-Established:

Find no history that Road C.L. should differ from that of Sectionline, per Road Record (#62) establishment. Corner re-established (per above) splits old bridge structure +/-, and is further respective of existing R.O.W. fence in contrast to the straight line reference per WPA project notes. Basis of establishment vs. WPA straight line notes given as "acceptable evidence that road record indicates location of corner", together with the "physical" representation of both Sectionline and Centerline as being the "same" for the North line of said Section. To date, no record plats of survey found to reference historical corner, and all surrounding land parcel divisions remain as original 40 acre aliquot parts of respective sections.

N.W. COR.
24-87-14
FND. S.M. SPK.
© HOLMES RD. INT.

N. 1/4 COR.
EST. CUT "X"
(Defl. 180°03'51")
SEE P. #2

NEW 87.5x30'
CCS BR. 2005

2624.07' (M.)
(2623.1' WPA 1939)

196.07' (M)

2624.07' (M)
(2623.1' WPA 1939)

50' R.O.W.

N.E. COR.
24-87-14
FND. PCC NAIL
© ACKER RD. INT.

P.O.T.
FND. R.H. NAIL
© 3" Dp.

EAGLE RD.
(A.C.C.)

FENCE ENTR.

COUNTY PLAN HISTORY:
5248.14' M. (5247.94 RTK x 1/.999961559523)
vs.
5247.90' (1950 Grading, w/ No Defl. Denoted
and Sta. split 2620.1 W. - 2627.8 E.)
vs.
5247.90' (1969 Paving, w/ No Corner Denoted)

NOTE: ALL DISTANCES PLUMB
(HORIZ.) AS DENOTED.

SCALE: 1"=40'

FIELD SURVEY: G. TINKER 03/28/2005
PREPARED BY: G. TINKER 04/04/2005

CERTIFICATION

LICENSED LAND SURVEYOR

GEOFFRY ALLEN TINKER

15748

IOWA

I hereby certify that this land surveying document was prepared and the related survey work was performed by me or under my direct personal supervision and that I am a duly licensed Land Surveyor under the laws of the State of Iowa.
Geoffry Allen Tinker 04/05/05
Geoffry Allen Tinker (date)
License Number 15748
My license renewal date is December 31, 2006
Pages or sheets covered by this seal:
Page #'s 1 & 2, as denoted

LIST CORNERS TO BE INDEXED

Corner	Section	Township	Range
N. 1/4	24	87 N	14 W
S. 1/4	13	87 N	14 W

G:\CAD Projects\LDDT3 Projects\BR248714-EagleRd\dwg\BR248714-EagleRd.dwg, 4/4/2005 4:55:43 PM, G.T.

PREPARED BY: BLACK HAWK COUNTY ENGINEERS OFFICE
316 E. FIFTH STREET, ROOM 211 WATERLOO, IOWA 50703

PH.# (319) 833-3008
FAX.# (319) 833-3139

SLSI 9-94
CERT 12-96

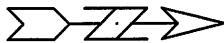
UNITED STATES PUBLIC LAND SURVEY CORNER CERTIFICATE OF
Land Survey Monuments situated in Section 24, Township 87 N,
Range 14 W, of the Fifth Principal Meridian, BLACK HAWK County, Iowa.
Previously recorded in Misc. Book n/a, Page n/a, in County Recorder's Office.

(Show reason for preparing this certificate, the evidence and detailed procedures used in establishing the corner positions and monumentation found or placed.)

Monument Description and Remarks: PER SHEET #1, THIS RECORD.

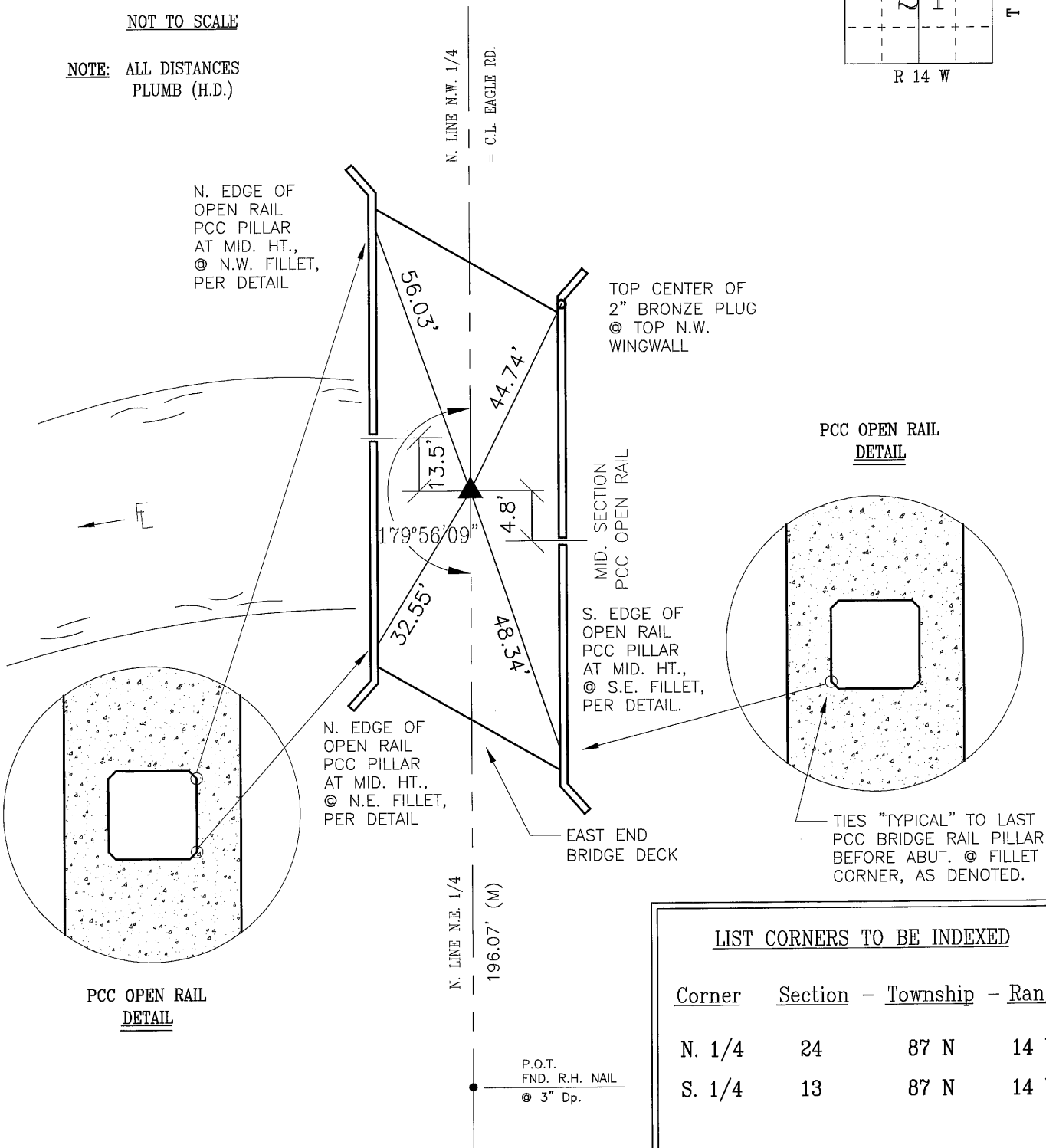
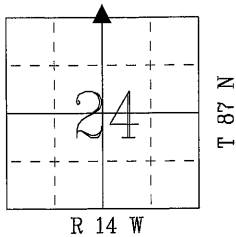
PLAN - VIEW

(Show a minimum of three reference ties to durable physical objects, relevant monuments and physical conditions that will enable recovery of the corner.)



NOT TO SCALE

NOTE: ALL DISTANCES
PLUMB (H.D.)



LIST CORNERS TO BE INDEXED

Corner	Section	Township	Range
N. 1/4	24	87 N	14 W
S. 1/4	13	87 N	14 W

FIELD SURVEY: G. TINKER 03/28/2005
PREPARED BY: G. TINKER 04/04/2005