



PREPARED BY
AND RETURN THIS ORIGINAL DOCUMENT TO:
JON MYERS PLS
IOWA DEPARTMENT OF TRANSPORTATION
DISTRICT 1 OFFICE
1020 SOUTH 4TH STREET
AMES, IOWA 50010
PHONE 515-239-1593

RESERVED FOR COUNTY RECORDER'S USE

Doc ID: 010406490001 Type: GEN
Recorded: 03/14/2022 at 09:10:23 AM
Fee Amt: \$7.00 Page 1 of 1
Black Hawk County Iowa
SANDIE L. SMITH RECORDER
File **2022-00018038**

UNITED STATES PUBLIC LAND SURVEY CORNER CERTIFICATE

Land Survey Monument(s) situated in Section 22, Township 87 North, Range 14 West, of the Fifth Principal Meridian, BLACKHAWK County, Iowa. IDOT Project NHSX-063-5(72)--3H-86
Previously recorded in N / A in the County Recorder's Office.
NE CORNER 22-87-14:

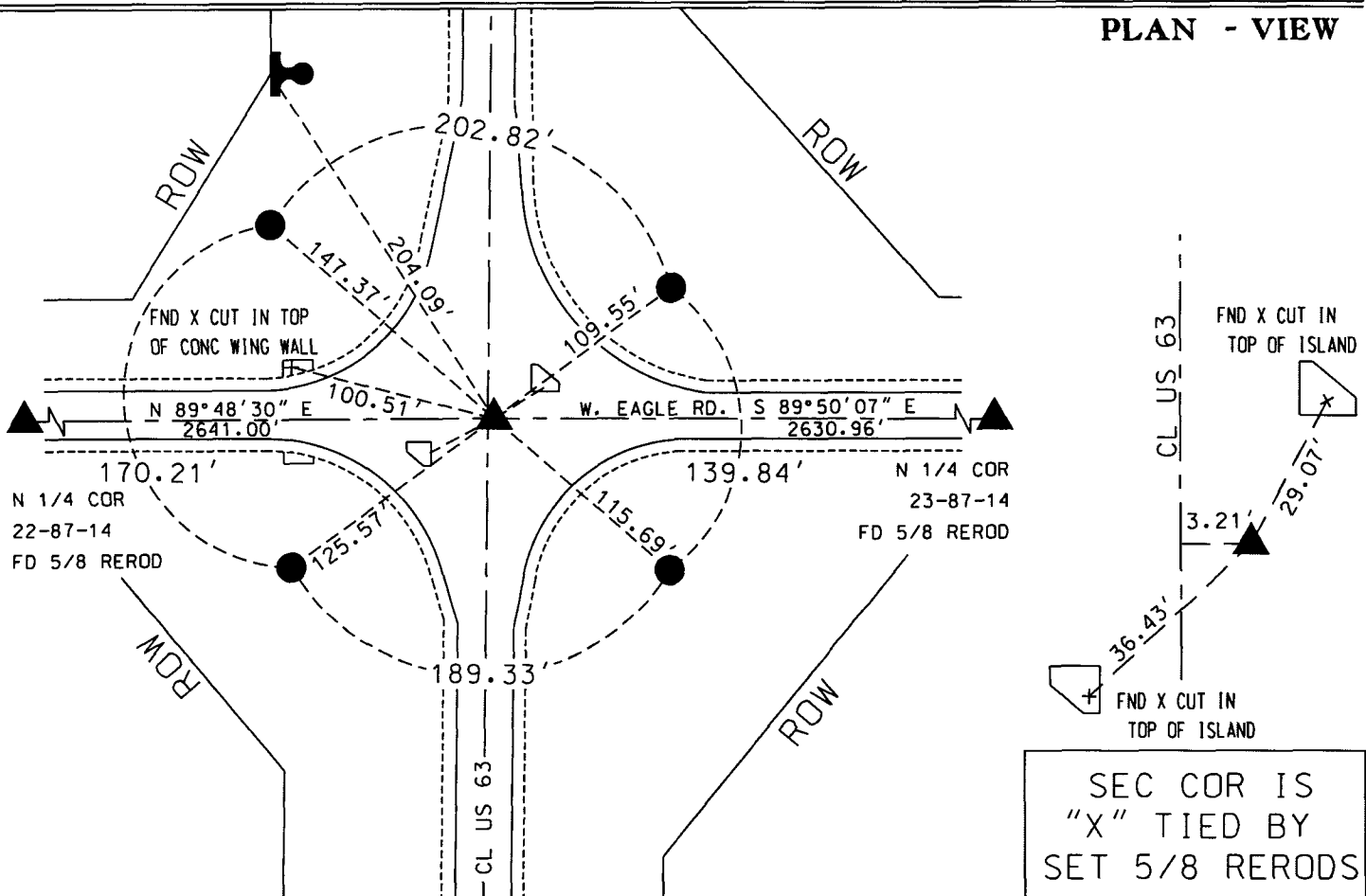
NO CORNER CERTIFICATE OF RECORD THAT ACCURATELY SHOWS THIS CORNER IN PLACE. PRIOR TO RECONSTRUCTION OF US 63, SECTION CORNER WAS PERPETUATED WITH A LEADPLUG IN ROADWAY. AFTER RECONSTRUCTION, SECTION CORNER WAS AGAIN PERPETUATED WITH A LEADPLUG IN CONCRETE ROAD. USED SECTION CORNER INFORMATION FROM A LAND CORNER STONE SURVEY BY CHARLES BABBIT DATED MAY 7, 1976 (IDOT PROJECT FN-175-9(12)--21-07) TO COMPUTE LOCATION OF NE CORNER. PULLED 2 REMAINING SECTION CORNER TIES - AND DUG A 2' x 2' HOLE IN ASPHALT ROAD AND FOUND A LEADPLUG - 9" BELOW TOP OF ASPHALT SURFACE IN ORIGINAL CONCRETE ROAD - 3.21' EAST OF CL US HWY 63. FILLED IN HOLE WITH ASPHALT SILVEX FILLER AND RAISED MONUMENT TO THE SURFACE WITH A MAG NAIL FLUSH WITH TOP OF ASPHALT PATCH. THIS CORNER MATCHES THE MONUMENT AND POSITION FOUND ON SAID LAND CORNER STONE SURVEY AND ACCEPTED THE LEADPLUG AS THE NE CORNER.

A NEW CORNER CERTIFICATE IS CREATED BECAUSE THERE IS NONE ON FILE WITH THE BLACKHAWK COUNTY RECORDER, TO UPDATE TIES FOR THE BLACKHAWK COUNTY ENGINEERS OFFICE AND TO REPLACE TIES BECAUSE THERE ARE VERY FEW IDOT SECTION CORNER TIES LEFT.

SECTION 22
T-87-N
R-14-W
N
NOT TO SCALE
(N.T.S.)

COORDINATE VALUE WAS ESTABLISHED UTILIZING NAD83 (2011)(EPOCH 2010) DATUM USING THE IOWA REGIONAL COORDINATE SYSTEM ZONE 5 PROJECTION IN U.S. SURVEY FEET
NE CORNER - #8031
N - 8787385.8010
E - 15444305.8620

PLAN - VIEW



SEC COR IS "X" TIED BY SET 5/8 RERODS

	I hereby certify that this Land Surveying document was prepared by me or under my direct personal supervision and that I am a duly licensed Professional Land Surveyor under the laws of the State of Iowa.		X = FND CUT X		Corner to be Indexed	
	Signature: <u>Jon Myers</u>		● = SET 5/8 REROD		NE CORNER	
	Date: <u>March 01, 2022</u> Lic. No. <u>22875</u>		□ = FND CONC. MON.		Sec. Twp. Range	
	My license renewal date is December 31, 2022.		T = FND IDOT RAIL		22 87 14	
	Pages or sheets covered by this seal. <u>1</u>		⊕ = FND/SET IDOT PI		Drawn by: <u>JMM</u>	