



PREPARED BY
AND RETURN THIS ORIGINAL DOCUMENT TO:
JON MYERS PLS
IOWA DEPARTMENT OF TRANSPORTATION
DISTRICT 1 OFFICE
1020 SOUTH 4TH STREET
AMES, IOWA 50010
PHONE 515-239-1593

RESERVED FOR COUNTY RECORDER'S USE



Doc ID: 010406500001 Type: GEN
Recorded: 03/14/2022 at 09:10:26 AM
Fee Amt: \$7.00 Page 1 of 1
Black Hawk County Iowa
SANDIE L. SMITH RECORDER

File **2022-00018039**

UNITED STATES PUBLIC LAND SURVEY CORNER CERTIFICATE

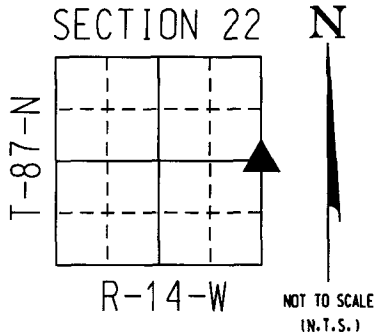
Land Survey Monument(s) situated in Section 22, Township 87 North, Range 14 West, of the Fifth Principal Meridian, BLACKHAWK County, Iowa. IDOT Project NHSX-063-5(72)--3H-86

Previously recorded in N / A in the County Recorder's Office.

E 1/4 CORNER 22-87-14:

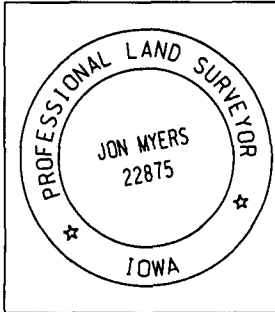
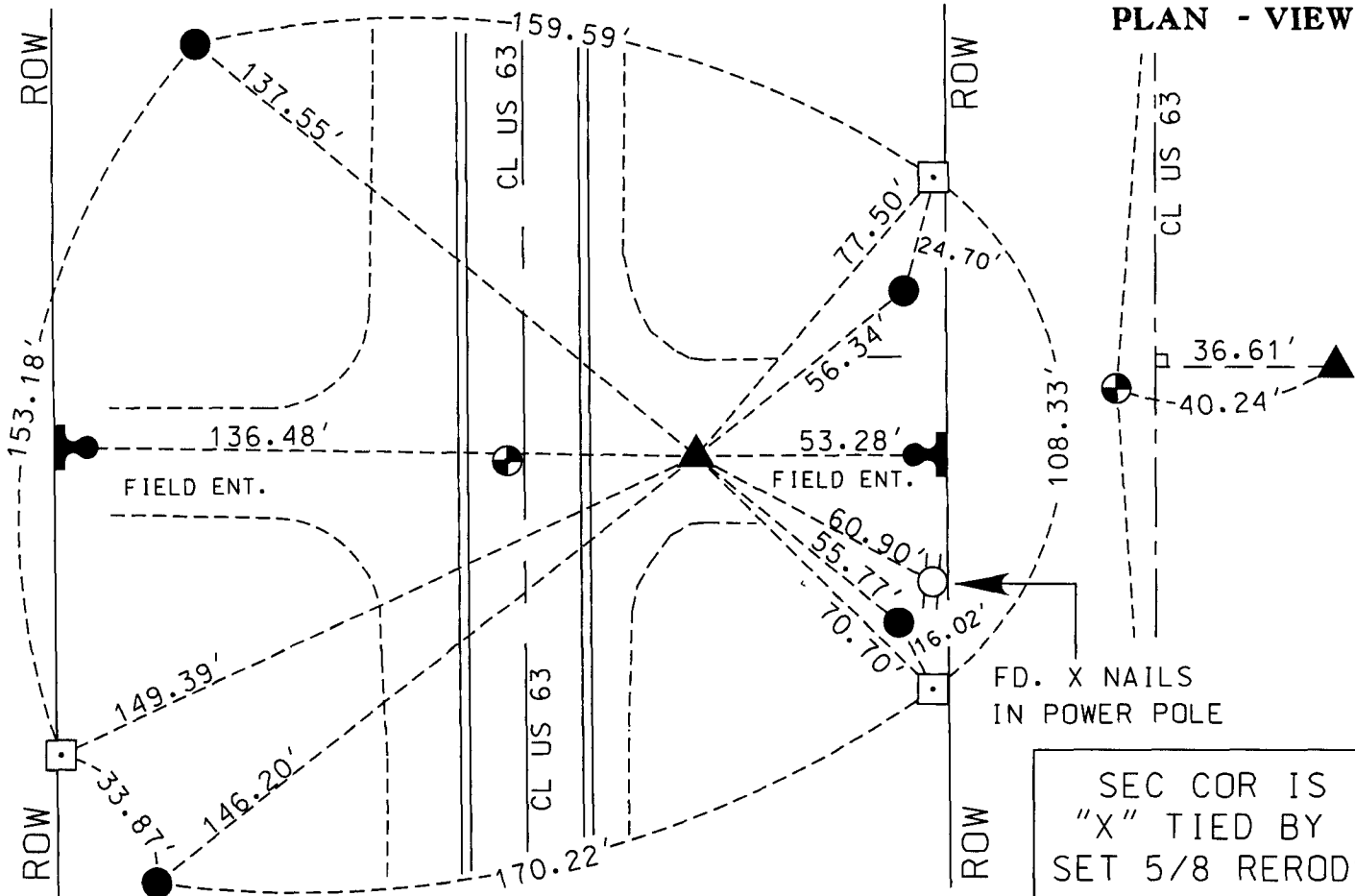
NO CORNER CERTIFICATE OF RECORD.
PRIOR TO RECONSTRUCTION OF US 63, SECTION CORNER WAS PERPETUATED WITH A LEADPLUG IN ROADWAY. AFTER RECONSTRUCTION, SECTION CORNER WAS AGAIN PERPETUATED WITH A CONCRETE MONUMENT WITH REROD IN CENTER. USED SECTION CORNER INFORMATION FROM A LAND CORNER STONE SURVEY BY CHARLES BABBIT DATED MAY 7, 1976 (IDOT PROJECT FN-175-9(12)--21-07) TO COMPUTE LOCATION OF E 1/4 CORNER. PULLED REMAINING SECTION CORNER TIES - DUG DOWN AND FOUND A CONCRETE MONUMENT WITH BAR IN CENTER - 13" DEEP BELOW TOP OF GRAVEL/ROCK SURFACE - 36.61' EAST OF CL US HWY 63. THIS CORNER MATCHES THE MONUMENT AND POSITION FOUND ON SAID LAND CORNER STONE SURVEY AND ACCEPTED THE CONCRETE MONUMENT AS THE E 1/4 CORNER.

A NEW CORNER CERTIFICATE IS CREATED BECAUSE THERE IS NONE ON FILE WITH THE BLACKHAWK COUNTY RECORDER AND TO UPDATE TIES FOR THE BLACKHAWK COUNTY ENGINEERS OFFICE.



COORDINATE VALUE WAS ESTABLISHED UTILIZING NAD83 (2011)(EPOCH 2010) DATUM USING THE IOWA REGIONAL COORDINATE SYSTEM ZONE 5 PROJECTION IN U.S. SURVEY FEET

E 1/4 CORNER - #8030
N - 8784699.7190
E - 15444311.3460



I hereby certify that this Land Surveying document was prepared by me or under my direct personal supervision and that I am a duly licensed Professional Land Surveyor under the laws of the State of Iowa.

Signature: [Signature]
Date: March 01, 2022 Lic. No. 22875
My license renewal date is December 31, 2022.
Pages or sheets covered by this seal. 1

<input type="radio"/> = FND CORNER	Corner to be Indexed		
<input checked="" type="radio"/> = SET 5/8 REROD	E 1/4 COR		
<input type="checkbox"/> = FND CONC. MON.	Sec.	Twp.	Range
<input type="checkbox"/> = FD IDOT RAIL	22	87	14
<input type="checkbox"/> = FD/SET IDOT PI	Drawn by: <u>JMM</u>		