

Kyle J. Helland, 6109 Chancellor Drive, Cedar Falls, Iowa 50613-6919, (319)-266-0161

Reserved for County Recorder's use.

UNITED STATES PUBLIC LAND SURVEY CORNER CERTIFICATE OF

LAND SURVEY MONUMENTS SITUATED IN SECTION NO. 20, TOWNSHIP NO. 87 NORTH, RANGE
NO. 14 WEST OF THE FIFTH PRINCIPAL MERIDIAN, BLACK HAWK COUNTY, IOWA.
PREVIOUSLY RECORDED IN N/A

(SHOW REASON FOR PREPARING THIS CERTIFICATE, THE EVIDENCE AND DETAILED PROCEDURES USED IN ESTABLISHING THE
CORNER POSITIONS AND MONUMENTATION FOUND OR PLACED.)

MONUMENT DESCRIPTION AND REMARKS:

NO USPLSCC ON FILE. SURVEY COMPLETED IN THE SE 1/4 OF SEC. 17-T87N-R14W.

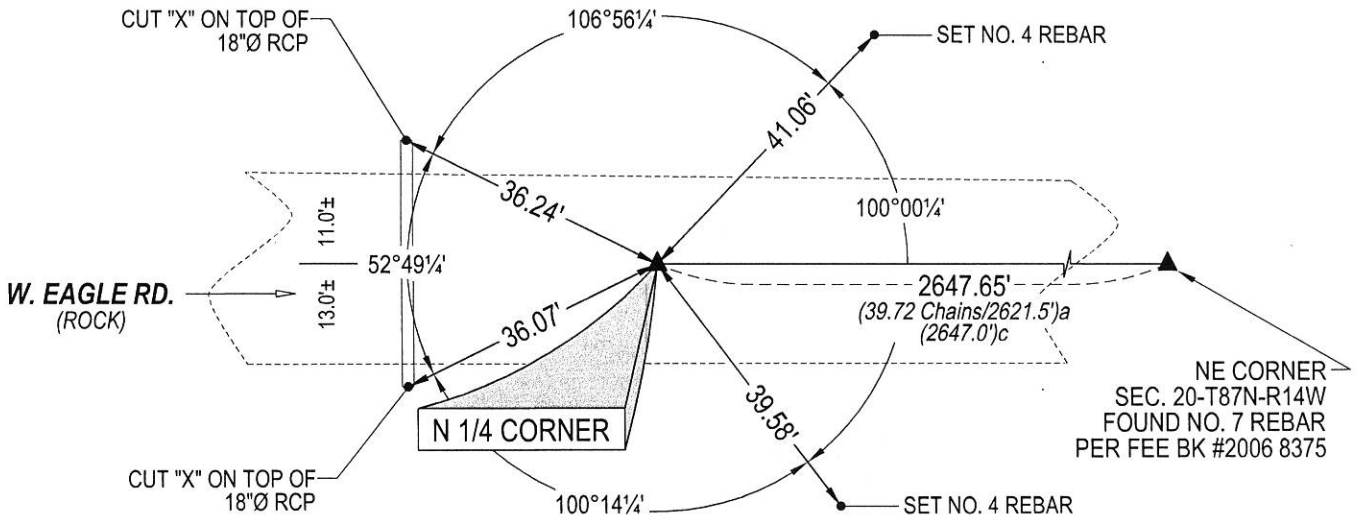
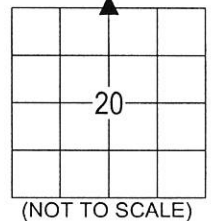
→ **N 1/4 CORNER:** JOHN BALL HISTORICAL SURVEY DATED 11/12/1884 CALLS FOR [STONE]. WPA NOTES PG 59 DATED
09/19/1938 CALLS FOR [FOUND LIMESTONE 5"x12"x12" STONE LAYING FLAT AND N***ER HEAD 8"x9"x20" ON END UNDER
LIME STONE ALSO OLD OAK HUB 2"x24" LOWERED STONES AND SET SCM ON TOP 12" UNDER GROUND]. SEARCHED
AREA FOUND NO. 6 REBAR, REMOVED SAID REBAR AND PROBED AND HIT HARD OBJECT, BELIEVED TO BE STANDARD
CONCRETE MONUMENT 2.2' DEEP. REPLACED SAID REBAR AND UTILIZED AS CORNER.

PLAN VIEW

(SHOW A MINIMUM OF THREE REFERENCE TIES TO DURABLE PHYSICAL OBJECTS, RELEVANT MONUMENTS AND PHYSICAL
CONDITIONS THAT WILL ENABLE RECOVERY OF THE CORNER.)

LEGEND

(0.0')a JOHN BALL HISTORICAL SURVEY
DATED 11/12/1884
(0.0')c WPA NOTES PG 61 DATED 09/14/1938



(BEARINGS ARE ASSUMED)



HELLAND ENGINEERING & SURVEYING, LTD.
6109 Chancellor Drive
Cedar Falls, Iowa 50613-6919
(319)-266-0161

SHINER = 4d. NAIL & 1 5/16"Ø METAL SHINER DRAWN BY: CDR
BRASS TAG = 4d. NAIL & 13/16"Ø BRASS TAG
OPC = PLASTIC CAP (O=ORANGE, R=RED, Y=YELLOW)
(00') RECORDED AS FILE NAME: 18-236-24.DWG



I hereby certify that this land surveying document was prepared
and the related survey work was performed by me or under my
direct personal supervision and that I am a duly licensed
Professional Land Surveyor under the laws of the State of Iowa.
Kyle J. Helland 01/24/2019
Kyle J. Helland
License Number 23212
My license renewal date is December 31, 2019.
All pages or sheets are covered by this seal except:

LIST CORNERS TO BE INDEXED			
CORNER	SECTION	TOWNSHIP	RANGE
N 1/4 CORNER	20	87N	14W
S 1/4 CORNER	17	87N	14W