

Number: 202300000367  
Recorded: 7/8/2022 at 9:22:50.0 AM  
County Recording Fee: \$7.00  
Iowa E-Filing Fee: \$3.00  
Combined Fee: \$10.00  
Revenue Tax:  
Sandie L. Smith, RECORDER  
Black Hawk County, Iowa

Prepared by & Return to: Herold - Reicks Surveying, 2206 East Bremer Avenue, Waverly, IA 50677, Ph. 319-483-5187

United States Public Land Survey Corner Certificate

Land Survey Monument situated in  
Section 19, Township 87 North, Range 14 West of the Fifth Principal Meridian, **Black Hawk** County, Iowa.  
Not on file in the County Recorder's Office.

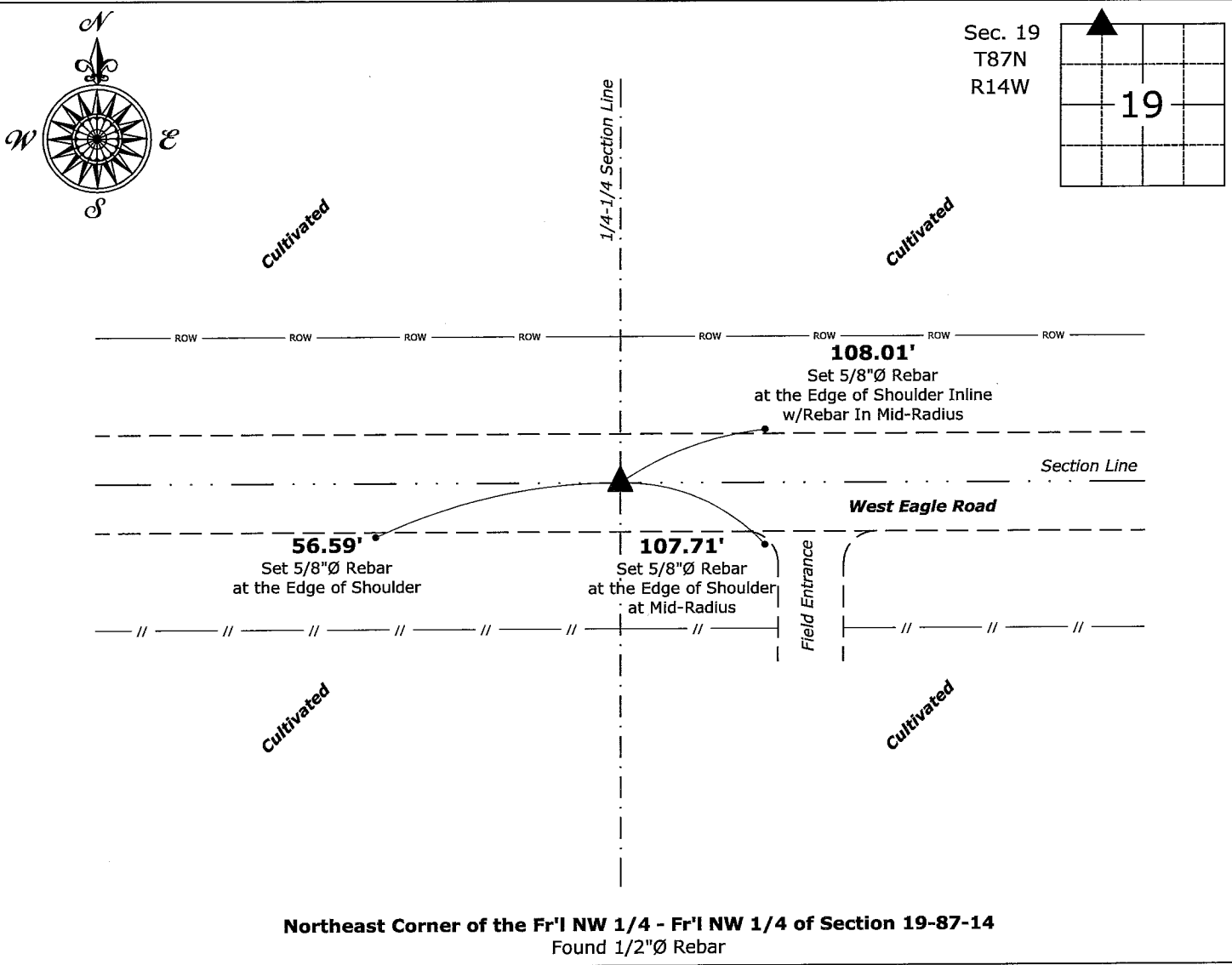
This certificate is being prepared in compliance with Iowa Code Chapter 355.11 because: {  
☒ There is no certificate on file for this corner.  
☐ There are no longer three valid ties of record.  
☐ There are changes to reference ties of record.  
☐ There is change of monumentation of record.  
☐ To clarify description of record monument (ties).

Monument Description and Remarks:

**Northeast Corner of the Fr'I NW 1/4 - Fr'I NW 1/4:** Found 1/2"Ø Rebar, after comparing the position's location relative to other adjacent Corners, accepted Monument to be the Corner.

Plan View

(Show a minimum of three reference ties to durable physical objects, relevant monuments and physical conditions that will enable recovery of the corner.)



Northeast Corner of the Fr'I NW 1/4 - Fr'I NW 1/4 of Section 19-87-14  
Found 1/2"Ø Rebar



I hereby certify that this land surveying document was prepared and the related survey work was performed by me or under my direct personal supervision and that I am a duly licensed Land Surveyor under the laws of the State of Iowa.  
*Isaiah M. Reicks* 7-7-22  
Isaiah M. Reicks Date:  
License number 22468  
My license renewal date is December 31, 2023.  
Sheets covered by this seal: Individual sheet only

List Corner to be Indexed			
Corner	Section	Twp.	Range
NE-NW-NW	19	87	14
Project Number: 2022-521			
FB: Black Hawk 1, Pgs. 38-41			