

Prepared by & Return to: Herold - Reicks Surveying, 2206 East Bremer Avenue, Waverly, IA 50677, Ph. 319-483-5187

Land Survey Monument situated in
Section **19**, Township **87** North, Range **14** West of the Fifth Principal Meridian, **Black Hawk** County, Iowa.
Not on file in the County Recorder's Office.

This certificate is being prepared in compliance with Iowa Code Chapter 355.11 because:

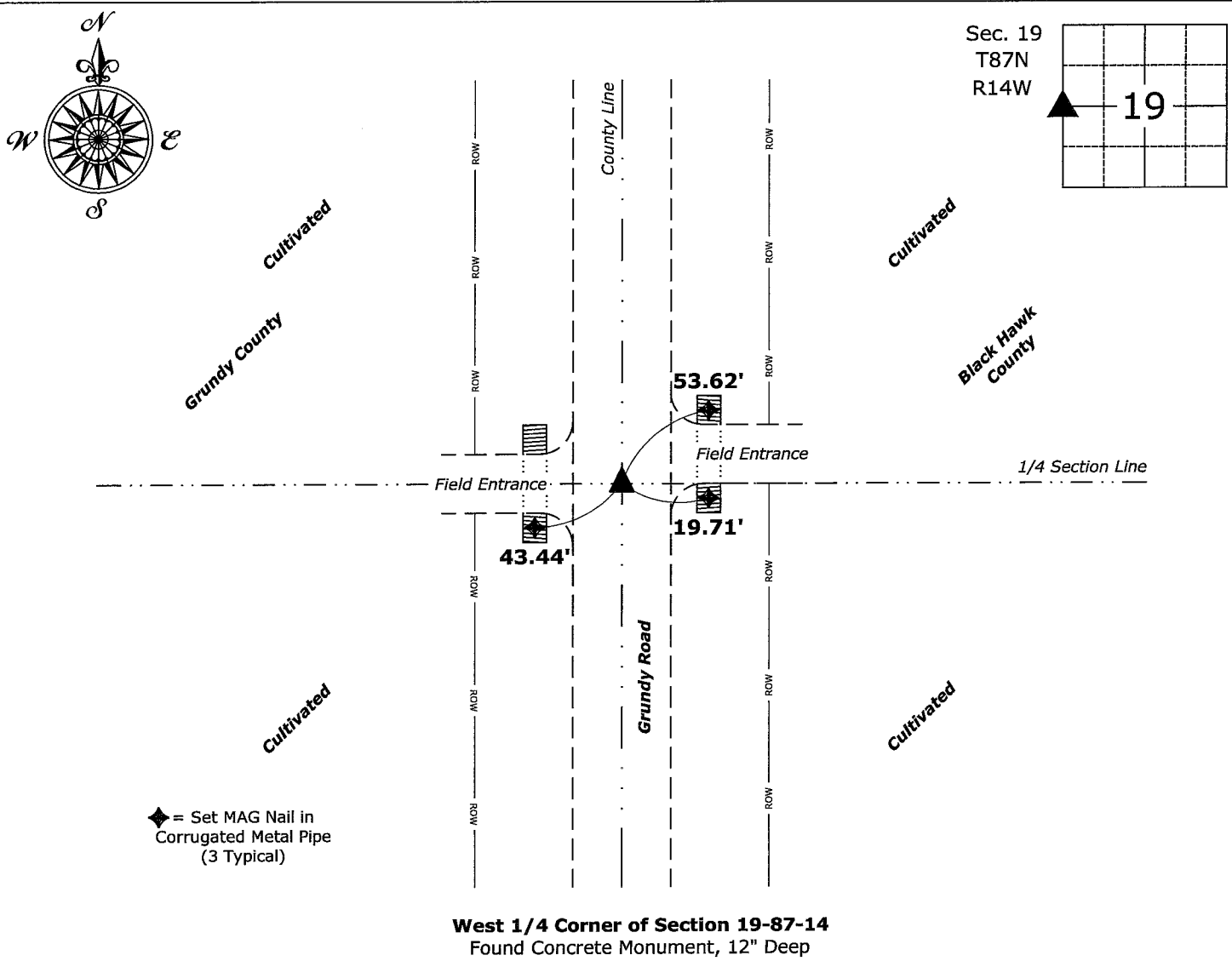
- ☒ There is no certificate on file for this corner.
 - ☐ There are no longer three valid ties of record.
 - ☐ There are changes to reference ties of record.
 - ☐ There is change of monumentation of record.
 - ☐ To clarify description of record monument (ties).

Monument Description and Remarks:

West 1/4 Corner: Found Concrete Monument, 12" Deep, with information obtained from a Survey and Plat, as recorded in Book 308, Page 414, on file in the County Recorder's Office.

Plan View

(Show a minimum of three reference ties to durable physical objects, relevant monuments and physical conditions that will enable recovery of the corner.)



I hereby certify that this land surveying document was prepared and the related survey work was performed by me or under my direct personal supervision and that I am a duly licensed Land Surveyor under the laws of the State of Iowa.

Isaiah M. Reicks 7-7-22
Isaiah M. Reicks Date:
License number 22468
My license renewal date is December 31, 2023.
Sheets covered by this seal: Individual sheet only

List Corner to be Indexed			
Corner	Section	Twp.	Range
W 1/4	19	87	14

Project Number: 2022-521
FB: Black Hawk 1, Pgs. 38-41