

Number: 202300000366
Recorded: 7/8/2022 at 9:22:50.0 AM
County Recording Fee: \$7.00
Iowa E-Filing Fee: \$3.00
Combined Fee: \$10.00
Revenue Tax:
Sandie L. Smith, RECORDER
Black Hawk County, Iowa

Prepared by & Return to: Herold - Reicks Surveying, 2206 East Bremer Avenue, Waverly, IA 50677, Ph. 319-483-5187

United States Public Land Survey Corner Certificate

Land Survey Monument situated in
Section 19, Township 87 North, Range 14 West of the Fifth Principal Meridian, **Black Hawk** County, Iowa.
Not on file in the County Recorder's Office.

This certificate is being prepared in compliance
with Iowa Code Chapter 355.11 because:

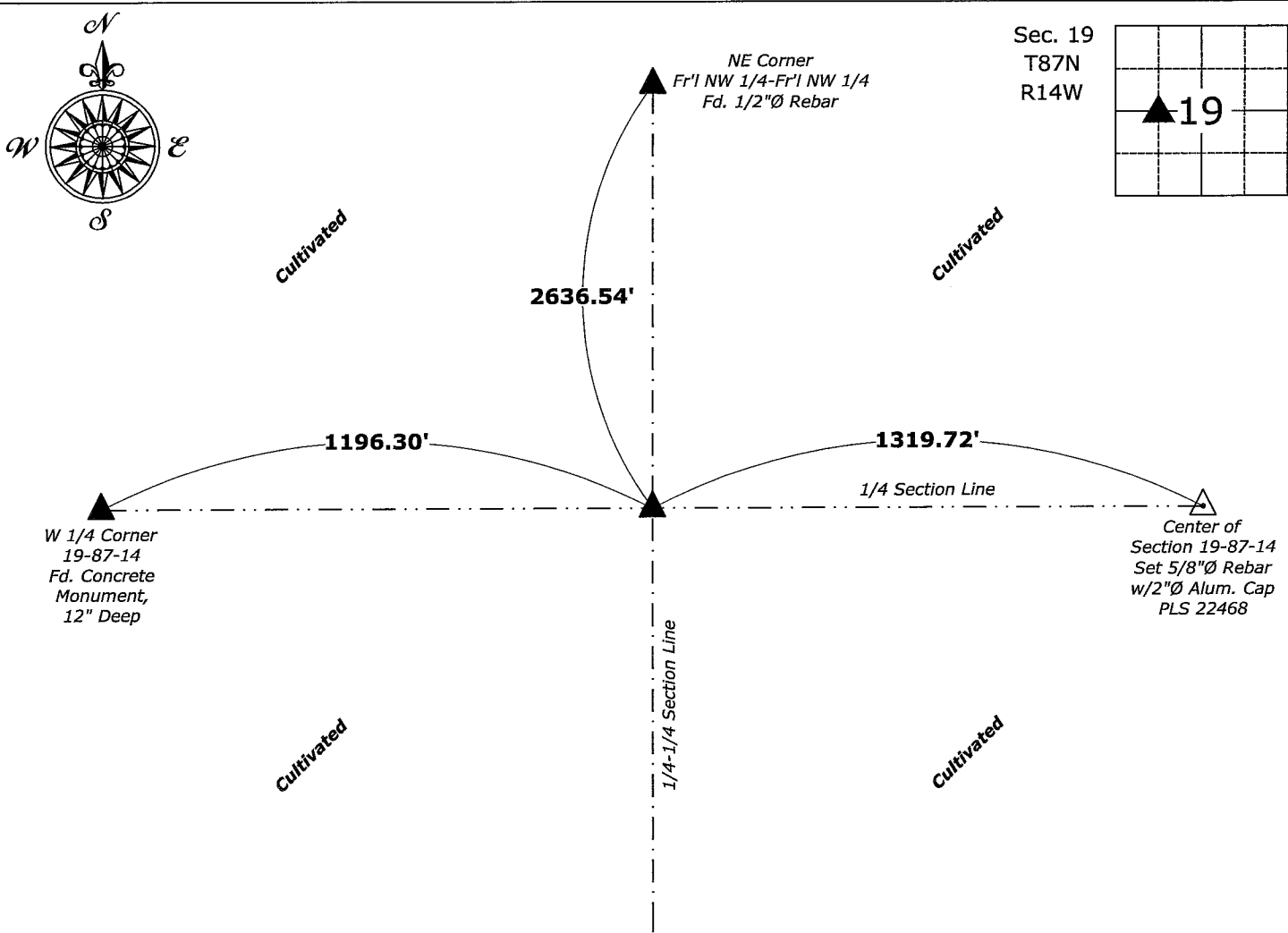
- ☒ There is no certificate on file for this corner.
☐ There are no longer three valid ties of record.
☐ There are changes to reference ties of record.
☐ There is change of monumentation of record.
☐ To clarify description of record monument (ties).

Monument Description and Remarks:

Northeast Corner of the Fr'I NW 1/4 - Fr'I SW 1/4: Found 3/8"Ø Rebar w/Yellow Plastic Cap PLS 2811, after
comparing the position's location relative to other adjacent Corners, accepted Monument to be the Corner.

Plan View

(Show a minimum of three reference ties to durable physical objects, relevant monuments and physical conditions that will enable recovery of the corner.)



Northeast Corner of the Fr'I NW 1/4 - Fr'I SW 1/4: of Section 19-87-14
Found 3/8"Ø Rebar w/Yellow Plastic Cap PLS 2811



I hereby certify that this land surveying document
was prepared and the related survey work was
performed by me or under my direct personal
supervision and that I am a duly licensed Land
Surveyor under the laws of the State of Iowa.
Isaiah M. Reicks 7-7-22
Isaiah M. Reicks Date:
License number 22468
My license renewal date is December 31, 2023.
Sheets covered by this seal: Individual sheet only

List Corner to be Indexed			
Corner	Section	Twp.	Range
NE-NW-SW	19	87	14
Project Number: 2022-521			
FB: Black Hawk 1, Pgs. 38-41			