

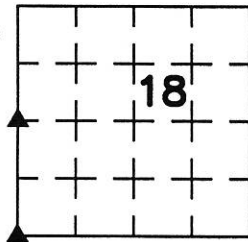
UNITED STATES PUBLIC LAND SURVEY CORNER CERTIFICATE

Prepared by & Return to: Scott A. Steinfadt, P.L.S.
PH: 641-847-3273 Clapsaddle-Garber Associates, Inc.
FAX: 641-847-2303 739 Park Ave., Ackley, IA. 50601

Doc ID: 009474290001 Type: GEN
Recorded: 01/24/2019 at 02:43:10 PM
Fee Amt: \$7.00 Page 1 of 1
Black Hawk County Iowa
SANDIE L. SMITH RECORDER
File 2019-00011410

Corners to be Indexed

Corners	Section	Township	Range
SW Corner	18	87N	14W
W 1/4 Corner	18	87N	14W

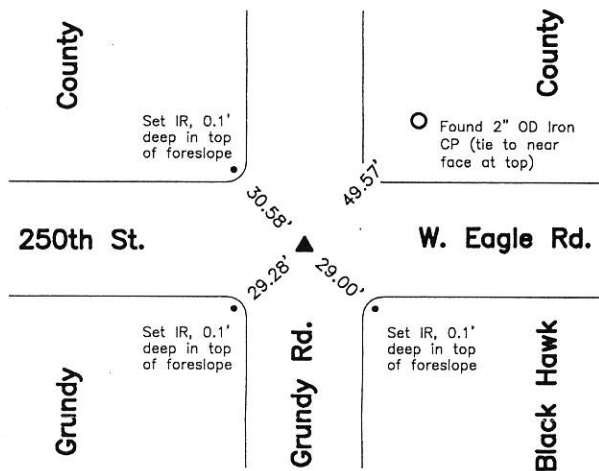


Land Survey Monuments situated in Section 18, Township 87 North, Range 14 West of the Fifth Principal Meridian, Black Hawk County, Iowa, Previously recorded in (see below) in County Recorder's Office.

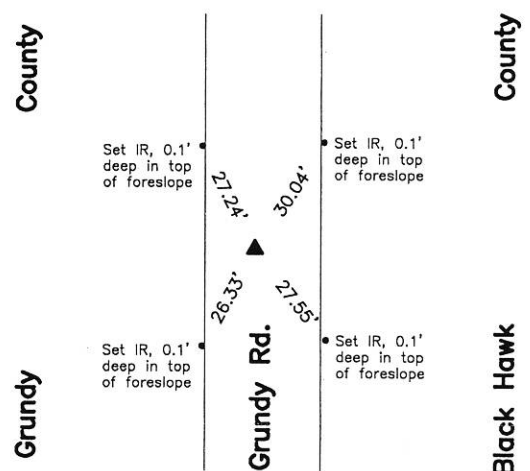
SW Corner - Grundy County Book 1 Page 14;
W 1/4 Corner - Not Applicable

These corners were used for a survey in this section for Matthew A. and Nicole A. Creswell. Basis of bearing for this corner certificate can be found on the associated plat of survey filed in the County Recorder's Office for this section.

SW Corner



W 1/4 Corner



Corner Recovery =

Grundy County Recorder's Book 1 Page 14 indicates corner is monumented with 'FD. 1/2" I.P.'. Grundy County Engineer's Current Ties indicate corner is monumented with 'Placed 5/8" x 18" Steel Rod 5" deep thru 1"x3" Hub over Conc. Marker'. Black Hawk County Engineer's Tie Card indicates corner is monumented with 'Found n*****head 8"x9"x15 1/2" also iron bar 1/2"x 16 1/2" set C.M. on top 12" deep'. Searched area with a magnetic locator and excavated a 1.5' x 0.8' deep hole at magnetic reading. Found a 60d iron spike, 0.5' deep. Tied out and removed spike, excavated further and found a 5/8" x 1.5' iron pin, 0.6' deep. Tied out and removed pin, searched down pin hole with a tile probe and hit concrete monument, 2.1' deep. Reset pin at original location and depth and used it as the correct corner. Pin is in apparent centerline of traveled surface of gravel road N-S and 2.0' ± S. of apparent centerline of traveled surface of gravel road E-W. Location of monuments found matches that of record, monuments found match that of record and one remaining record tie is within reason. All ties are plumb distance.

This certificate is being prepared because there are no longer three valid ties of record in Grundy County and because there are no certificates on file for this corner in Black Hawk County.

Corner Recovery =

Grundy County Engineer's Ties indicate corner is monumented with "Iron Stake (on line) July 5, 1935 and Dug 4'x4' & Probed to 4' depth but did not find anything. 4-21-64". Black Hawk County Engineer's Tie Card indicates corner is monumented with "Found nothing except iron bar on 1/4 fc W. This did not check for chaining. Rerun 1/4 fc line from E. established cor at intersection of 1/4 fc line and straight line between N.W. and S.W. cor. Sec 18 and on midpoint of mile as it fell on this intersection Midpoint 1.26' S. of 1/4 fc". Calculated a point equidistance and online between the SW Corner Section 18 and a faint magnetic reading near the NW Corner of Section 18, searched a 20.0' ± area around calculated point with a magnetic locator and found no magnetic readings. Excavated a 2.5' x 1.9' deep hole at calculated point and found a 4" x 4" brass capped concrete monument, 1.6' deep at 1.0' ± W. of apparent centerline of traveled surface of gravel road N-S. Location of monument found matches that of record, monument found matches that of record. Therefore, placed an orange plastic cased magnet on N. side of concrete monument for locating purposes only and set a 3/4" x 1.2' aluminum capped iron rerod (#14677), 0.4' deep on monument and used rerod as the correct corner. All ties are plumb distance.

This certificate is being prepared because there are no certificates on file for this corner.



I hereby certify that this land surveying document was prepared and the related survey work was performed by me or under my direct personal supervision and that I am a duly licensed Professional Land Surveyor under the laws of the State of Iowa.

Scott A. Steinfadt, P.L.S.
SCOTT A. STEINFADT, PLS

Date: 01/17/2019 License number: 14677

My license renewal date is December 31, 2020

Pages or sheets covered by this seal: 1

Legend

CP = Corner Post
IR = 1/2" x 2.0' Iron Rerod
OD = Outside Diameter