

BLACK HAWK COUNTY ENGINEER

PREPARED BY: BLACK HAWK COUNTY ENGINEERS OFFICE
316 E. FIFTH STREET, ROOM 211 WATERLOO, IOWA 50703
PH.# (319) 833-3008 SLSI 9-94
FAX.# (319) 833-3139 CERT 12-96

UNITED STATES PUBLIC LAND SURVEY CORNER CERTIFICATE OF
Land Survey Monuments situated in Section 18, Township 87 N,
Range 14 W, of the Fifth Principal Meridian, BLACK HAWK County, Iowa.
Previously recorded in Misc. Book N/A, Page N/A, in County Recorder's Office.

(Show reason for preparing this certificate, the evidence and detailed procedures used in establishing the corner positions and monumentation found or placed.)

Monument Description and Remarks: FOUND 1" PINCHED GAS PIPE @ 8" Dp.,
& LOCATED +/- 16' N. OF N. END NEW PCC BR., AND ALIGNED +/- 3' SOUTH
OF WEST OCCUPATION LINE (FIELD LINE/REMNANT FENCE), AND ALSO FENCE
ON WEST HORIZON. CORNER RECOVERED FOR BR. PRELIM. SURVEY IN OCT.
2003, PRESERVED DURING CONSTRUCTION OF NEW BR. STRUCT. DURING SEPT./
OCT. 2004, AND TIED FOR PUBLIC RECORD.

PLAN - VIEW

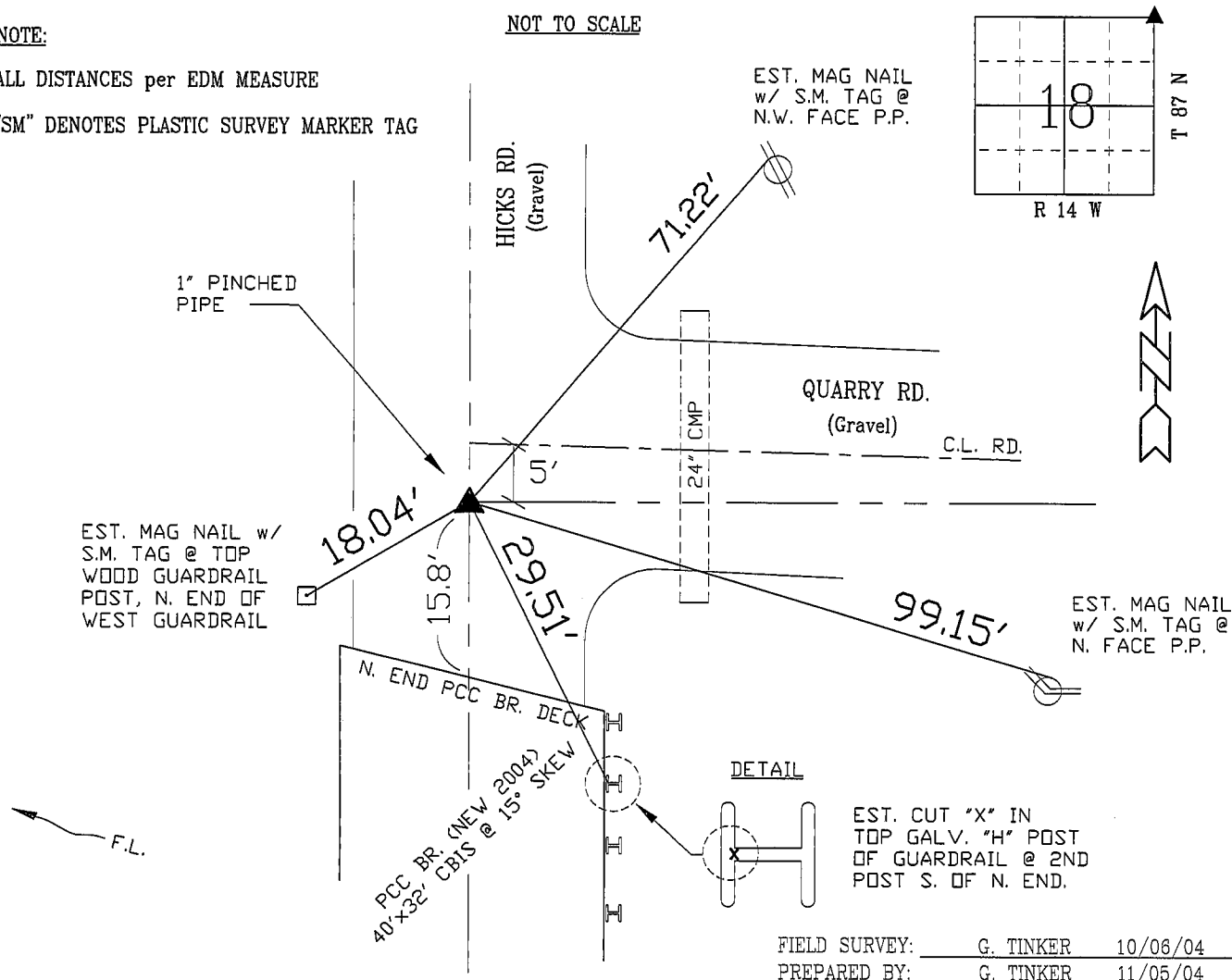
(Show a minimum of three reference ties to durable physical objects, relevant monuments and physical conditions that will enable recovery of the corner.)

NOTE:

ALL DISTANCES per EDM MEASURE

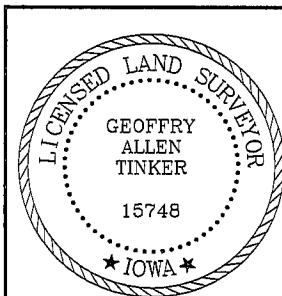
"SM" DENOTES PLASTIC SURVEY MARKER TAG

NOT TO SCALE



FIELD SURVEY: G. TINKER 10/06/04
PREPARED BY: G. TINKER 11/05/04

CERTIFICATION



I hereby certify that this land surveying document was prepared and the related survey work was performed by me or under my direct personal supervision and that I am a duly licensed Land Surveyor under the laws of the State of Iowa.

Geoffrey C. Tinker 11/05/04
Geoffrey Allen Tinker (date)

License Number 15748

My license renewal date is December 31, 2004

Pages or sheets covered by this seal:

This Land Corner Certificate Only.

LIST CORNERS TO BE INDEXED

Corner	Section	Township	Range
N.E. COR.	18	87 N	14 W
N.W. COR.	17	87 N	14 W
S.E. COR.	7	87 N	14 W
S.W. COR.	8	87 N	14 W