



SMARTER | SIMPLER | CUSTOMER DRIVEN

PREPARED BY  
AND RETURN THIS ORIGINAL DOCUMENT TO:  
JON MYERS PLS  
IOWA DEPARTMENT OF TRANSPORTATION  
DISTRICT 1 OFFICE  
1020 SOUTH 4TH STREET  
AMES, IOWA 50010  
PHONE 515-239-1593

RESERVED FOR COUNTY RECORDER'S USE

2024-15106  
RECORDED: 05/31/2024 03:50:01 PM  
RECORDING FEE: \$7.00  
IOWA E-FILING FEE: \$3.00  
COMBINED FEE: \$10.00  
REVENUE TAX: \$0.00  
SANDIE L. SMITH, RECORDER  
BLACK HAWK COUNTY, IOWA

## UNITED STATES PUBLIC LAND SURVEY CORNER CERTIFICATE

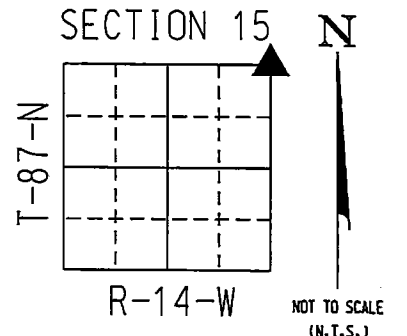
Land Survey Monument(s) situated in Section 15, Township 87 North, Range 14 West, of the Fifth Principal Meridian, BLACKHAWK County, Iowa. IDOT Project NHSX-063-5(72)--3H-86  
Previously recorded in FILE #2014-00004811 in the County Recorder's Office.

NE CORNER 15-87-14:

A SURVEY OF THE US 63 HIGHWAY CORRIDOR WAS CONDUCTED BEFORE CONSTRUCTION OF PCC MAT. OVERLAY, FOR IOWA D.O.T. PROJECT: NHSX-063-5(72)--3H-86  
A CONCRETE MONUMENT WITH 1/2" REROD IN CENTER - 18" DEEP WAS FOUND BY USING A CORNER CERTIFICATE BY DAVID L. SCHEIL. ACCEPTED FOUND CONCRETE MONUMENT AS THE SECTION CORNER MONUMENT FOR THE NE CORNER SEC. 15-87N-14W. POSITION OF SAID MONUMENT WAS PRESERVED BY PERFORMING REDUNDANT R.T.K. GPS OBSERVATIONS.

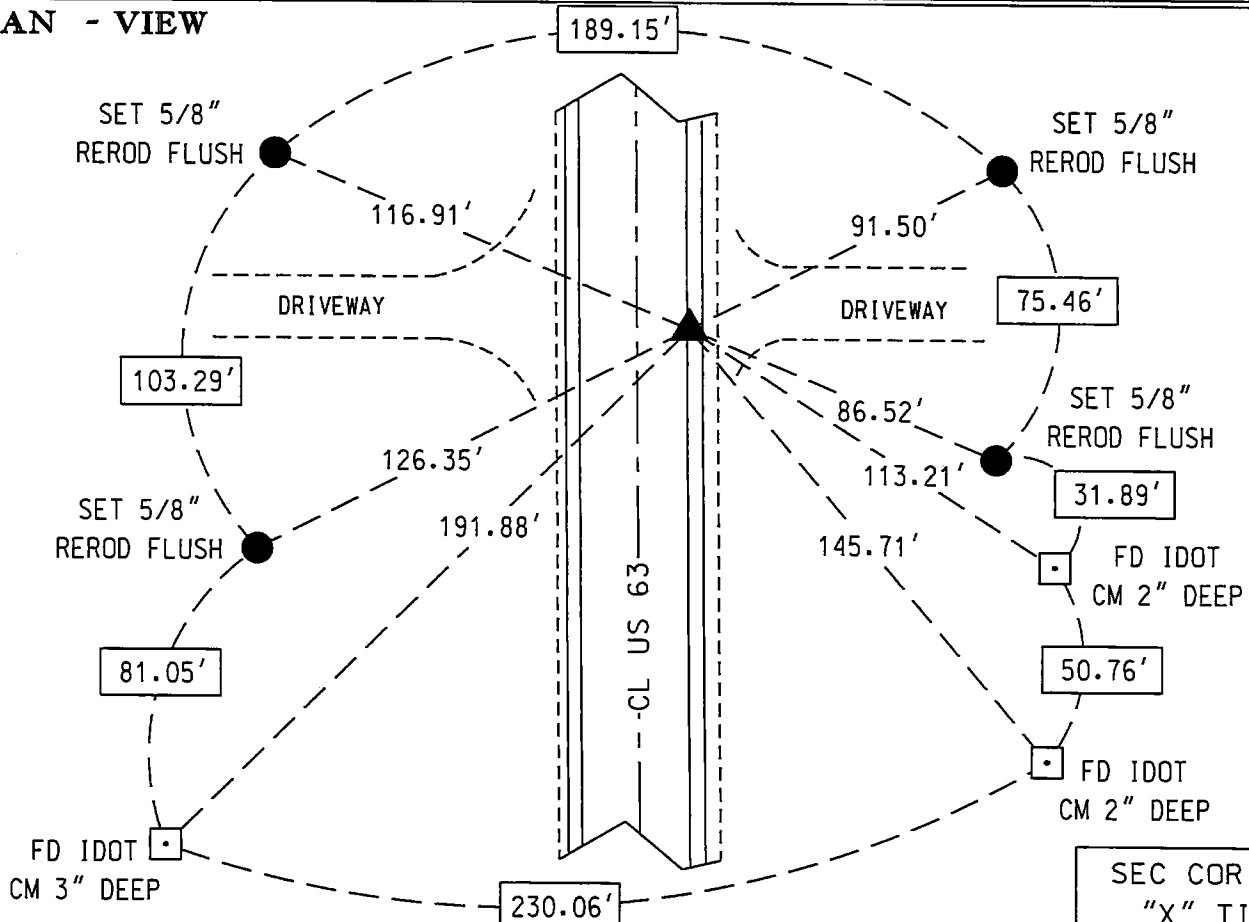
AFTER CONSTRUCTION, RE-SET CORNER WITH A 1" x 3" LONG STEEL SURVEY MARK NAIL SET INSIDE OF A CUT "X" IN CONCRETE ROAD AT THE LOCATION OF FOUND CONCRETE MONUMENT.

CORNER CERTIFICATE CREATED BECAUSE THE CORNER MONUMENT HAS CHANGED.

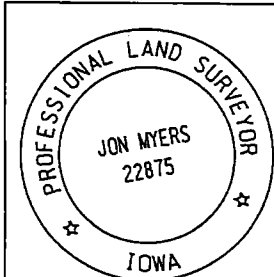


COORDINATE VALUE WAS ESTABLISHED UTILIZING NAD83 (2011)(EPOCH 2010) DATUM USING THE IOWA REGIONAL COORDINATE SYSTEM ZONE 5 PROJECTION IN U.S. SURVEY FEET  
NE CORNER - #8027  
N - 8792700.8830  
E - 15444283.2540

### PLAN - VIEW



SEC COR IS "X" TIED		
Corner to be Indexed		
NE CORNER		
Sec.	Twp.	Range
15	87	14
Drawn by: BRW		



I hereby certify that this Land Surveying document was prepared by me or under my direct personal supervision and that I am a duly licensed Professional Land Surveyor under the laws of the State of Iowa.

Signature: Jon Myers  
Date: November 8, 2023 Lic. No. 22875  
My license renewal date is December 31, 2024.  
Pages or sheets covered by this seal. 1

- SM = SET SURVEY MARK TAB IN WOOD POST
- = SET 5/8 REROD
- = FND CONC. MON.
- ⌵ = FD IDOT RAIL
- ⊙ = FD/SET IDOT PI