



PREPARED BY
AND RETURN THIS ORIGINAL DOCUMENT TO:
JON MYERS PLS
IOWA DEPARTMENT OF TRANSPORTATION
DISTRICT 1 OFFICE
1020 SOUTH 4TH STREET
AMES, IOWA 50010
PHONE 515-239-1593

RESERVED FOR COUNTY RECORDER'S USE



Doc ID: 010406480001 Type: GEN
Recorded: 03/14/2022 at 09:10:17 AM
Fee Amt: \$7.00 Page 1 of 1
Black Hawk County Iowa
SANDIE L. SMITH RECORDER

File 2022-00018037

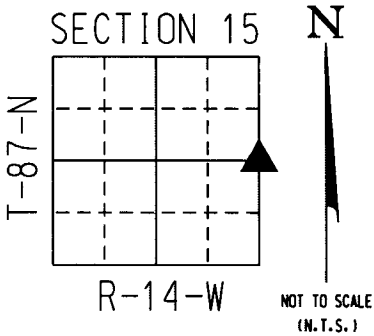
UNITED STATES PUBLIC LAND SURVEY CORNER CERTIFICATE

Land Survey Monument(s) situated in Section 15, Township 87 North, Range 14 West, of
the Fifth Principal Meridian, BLACKHAWK County, Iowa. IDOT Project NHSX-063-5(72)--3H-86
Previously recorded in _____ N / A _____ in the
County Recorder's Office.

E 1/4 CORNER 15-87-14:

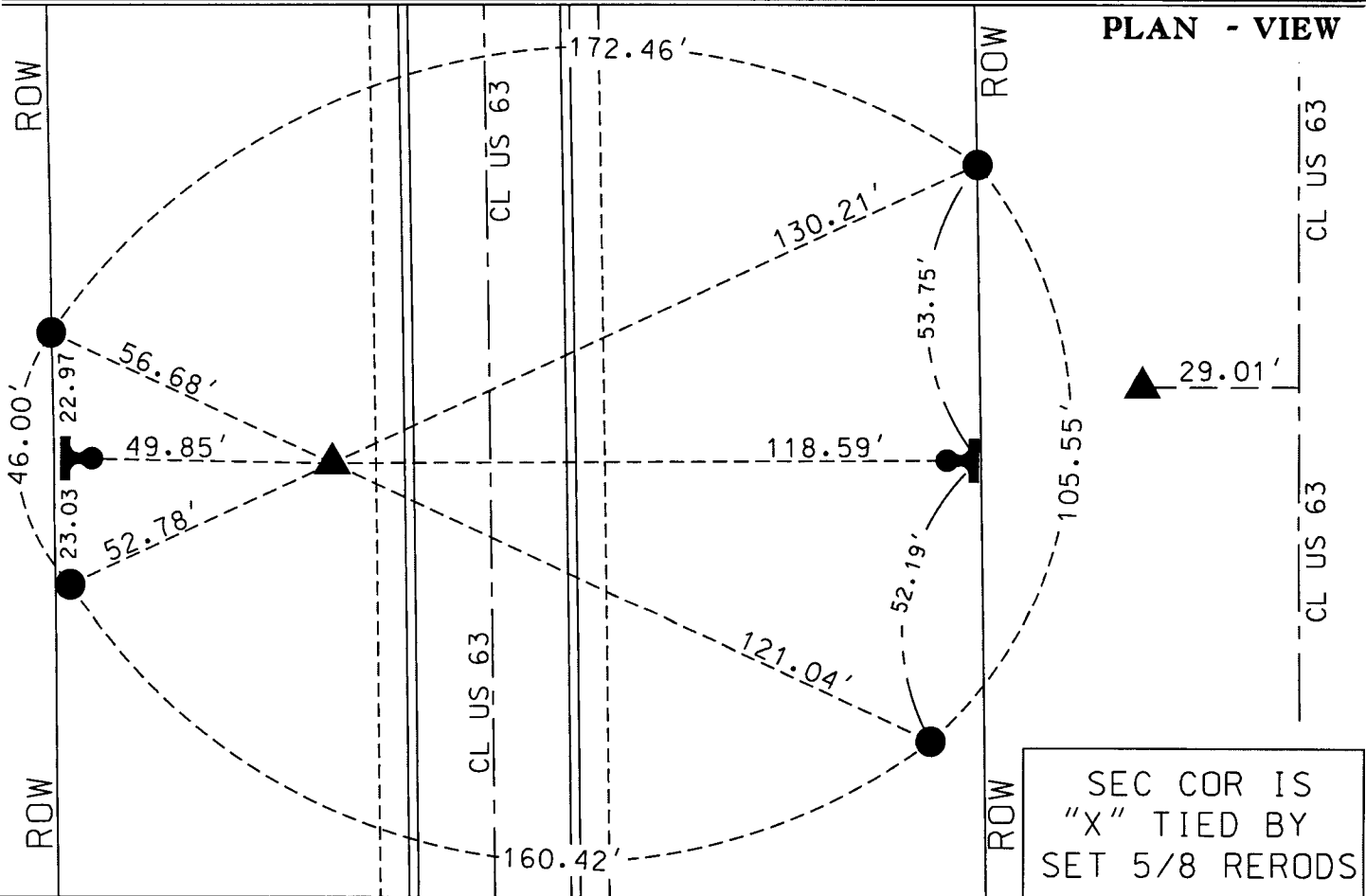
NO CORNER CERTIFICATE OF RECORD.
PRIOR TO RECONSTRUCTION OF US 63, SECTION CORNER WAS PERPETUATED WITH A
LEADPLUG IN ROADWAY. AFTER RECONSTRUCTION, SECTION CORNER WAS AGAIN
PERPETUATED WITH A CONCRETE MONUMENT WITH REROD IN CENTER. USED SECTION
CORNER INFORMATION FROM A LAND CORNER STONE SURVEY BY MARION MILLER DATED
JANUARY 12, 1970 (IDOT PROJECT FN-63-6(2)--21-07) AND IDOT ACQUISITION
DOCUMENTS FOR THIS SECTION TO COMPUTE LOCATION OF E 1/4 CORNER. SEARCHED
AREA - DUG A 1' x 1' HOLE AND FOUND A CONCRETE MONUMENT WITH REROD IN
CENTER - 12" DEEP - 29.01' WEST OF CENTERLINE US HWY 63. ACCEPTED THE
CONCRETE MONUMENT AS THE E 1/4 CORNER.

A NEW CORNER CERTIFICATE IS CREATED BECAUSE THERE IS NONE ON FILE WITH THE
BLACKHAWK COUNTY RECORDER, TO UPDATE TIES FOR THE BLACKHAWK COUNTY
ENGINEERS OFFICE AND TO REPLACE TIES BECAUSE THERE ARE VERY FEW IDOT
SECTION CORNER TIES LEFT.



COORDINATE VALUE WAS
ESTABLISHED UTILIZING
NAD83 (2011)(EPOCH 2010)
DATUM USING THE IOWA
REGIONAL COORDINATE
SYSTEM ZONE 5
PROJECTION
IN U.S. SURVEY FEET

E 1/4 CORNER - #8022
N - 8790042.2020
E - 15444294.1090



	I hereby certify that this Land Surveying document was prepared by me or under my direct personal supervision and that I am a duly licensed Professional Land Surveyor under the laws of the State of Iowa.		○ = FND CORNER		Corner to be Indexed	
	Signature: _____		● = SET 5/8 REROD		E 1/4 COR	
	Date: <u>March 01, 2022</u> Lic. No. <u>22875</u>		□ = FND CONC. MON.		Sec.	Twp.
	My license renewal date is December 31, 2022.		= FD IDOT RAIL		15	87
Pages or sheets covered by this seal. <u>1</u>		= FD/SET IDOT PI		Range		
				14		
				Drawn by: <u>JMM</u>		

20002