



PREPARED BY
AND RETURN THIS ORIGINAL DOCUMENT TO:
JON MYERS PLS
IOWA DEPARTMENT OF TRANSPORTATION
DISTRICT 1 OFFICE
1020 SOUTH 4TH STREET
AMES, IOWA 50010
PHONE 515-239-1593

RESERVED FOR COUNTY RECORDER'S USE

Number: 202400006576
Recorded: 11/17/2023 at 1:40:23.0 PM
County Recording Fee: \$7.00
Iowa E-Filing Fee: \$3.00
Combined Fee: \$10.00
Revenue Tax:
Sandie L. Smith, RECORDER
Black Hawk County, Iowa

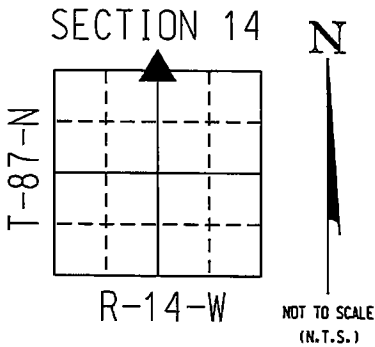
UNITED STATES PUBLIC LAND SURVEY CORNER CERTIFICATE

Land Survey Monument(s) situated in Section 14, Township 87 North, Range 14 West, of the Fifth Principal Meridian, BLACKHAWK County, Iowa. IDOT Project NHSN-063-5(64)--2R-86
Previously recorded in N/A in the County Recorder's Office.

N 1/4 CORNER 14-87-14:

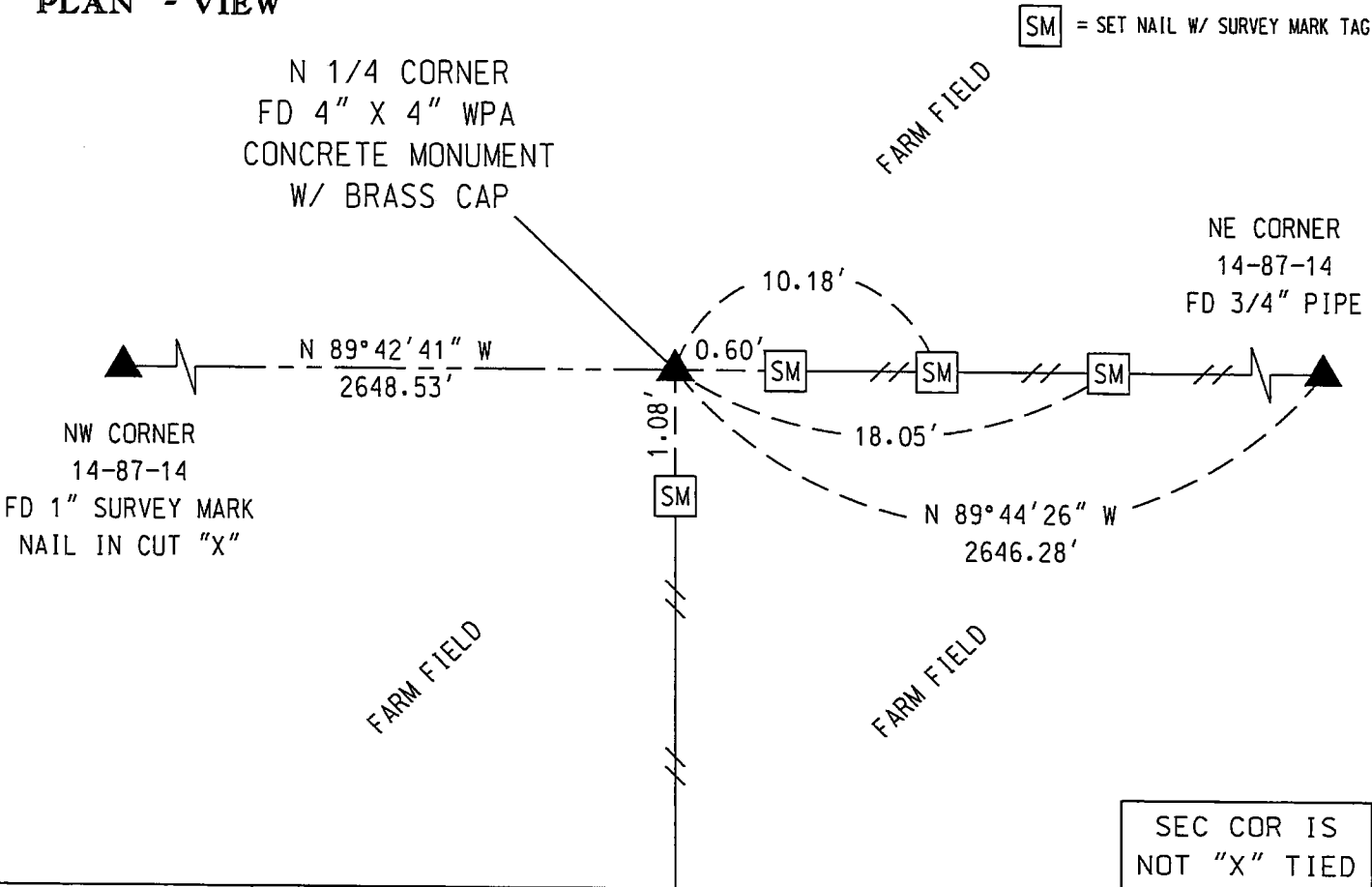
I WAS UNABLE TO FIND A CORNER CERTIFICATE FOR THIS CORNER AT THE COUNTY RECORDER'S OFFICE. BOTH IDOT AND BLACKHAWK COUNTY ENGINEERING TIES SHOW THIS CORNER TO BE A 4" x 4" WPA CONCRETE MONUMENT WITH BRASS DISC IN CENTER. USED INFORMATION FROM A LAND CORNER SURVEY BY MARION L. MILLER DATED JANUARY 12, 1970 (IDOT PROJECT FN-63-6(2)--21-07) IN BLACK HAWK COUNTY TO FIND TIES - SEARCHED AREA AND FOUND SAID CONCRETE MONUMENT - FLUSH WITH TOP OF GROUND - NEAR THE JUNCTION OF FENCES SOUTH AND EAST. MONUMENT IS 0.68' SOUTH OF A STRAIGHT LINE FROM NW CORNER TO NE CORNER. FOUND CORNER MATCHES THE MONUMENT SHOWN ON SAID COUNTY AND IDOT ENGINEERING TIES AND ACCEPTED FOUND CONCRETE MONUMENT AS THE N 1/4 CORNER.

A NEW CORNER CERTIFICATE IS CREATED BECAUSE THERE IS NONE ON FILE WITH THE BLACKHAWK COUNTY RECORDER'S OFFICE.

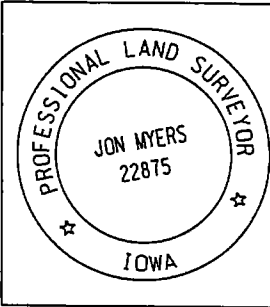


COORDINATE VALUE WAS ESTABLISHED UTILIZING NAD83 (2011)(EPOCH 2010) DATUM USING THE IOWA REGIONAL COORDINATE SYSTEM ZONE 5 PROJECTION IN U.S. SURVEY FEET
N 1/4 CORNER - #8039
N - 8792687.5390
E - 15446931.7460

PLAN - VIEW



SM = SET NAIL W/ SURVEY MARK TAG



I hereby certify that this Land Surveying document was prepared by me or under my direct personal supervision and that I am a duly licensed Professional Land Surveyor under the laws of the State of Iowa.
Signature: Jon Myers
Date: November 8, 2023 Lic. No. 22875
My license renewal date is December 31, 2024.
Pages or sheets covered by this seal. 1

- SM = SET SURVEY MARK TAB IN WOOD POST
- = SET 5/8 REROD
- = FND CONC. MON.
- ⌋ = FD IDOT RAIL
- ⊙ = FD/SET IDOT PI

SEC COR IS NOT "X" TIED		
Corner to be Indexed		
N 1/4 COR		
Sec.	Twp.	Range
14	87	14
Drawn by: JMM		