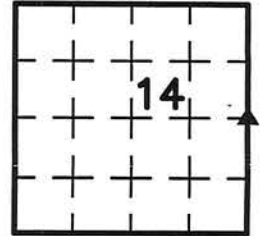


* Land Surveying
Zeb J. Stanbrough PLS, Ryken Engineering, 739 Park Avenue, Ackley, IA 50601 - Ph. 641-847-3273 - Fax 641-847-2303

UNITED STATES PUBLIC LAND SURVEY CORNER CERTIFICATE OF

Land Survey Monuments situated in Section 14 , Township 87 North,
Range 14 West, of the Fifth Principal Meridian, Black Hawk County, Iowa,
Previously recorded in Fee Book #2008011966 in County Recorder's Office



This corner was used for a survey in this section for Brian and Diana Minard. Basis of bearing for this corner cert. can be found on the associated plat of survey filed in the Co. Rec's Office for this section.

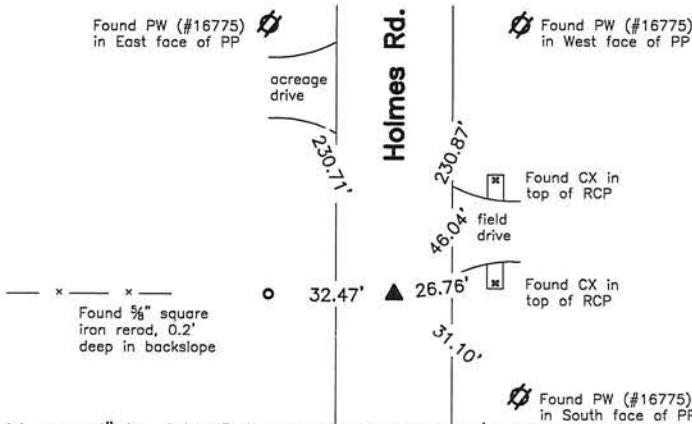
BC = Iron Nail with Bottle Cap
BP = Brace Post
CP = Corner Post
CMP = Corrugated Metal Pipe
CM = 4" Sq Concrete Monument with 1/2" iron rod in center (tie to rod)
CX = Cut 'X'
GP = Gate Post
IR = 5/8" x 2.0' Iron Rerod

Legend
ID = Inside Diameter
OD = Outside Diameter
PP = Power Pole
PW = Iron Nail with Plastic Washer
RCP = Reinforced Concrete Pipe
RH = Red Head (Iron Nail in wire)
RW = Iron Nail with Reflective Round Washer
ROW = Right of Way

R/W = Iron ROW Rail
SFP = Steel 'T' Post
SW = Iron Nail with Square Metal Washer
TP = Telephone Pedestal
TW = Iron Nail with Round Metal Washer
WFP = Wood Fence Post
X = Iron 'X' Nails



E 1/4 Cor.



History of Corner =
1868, June 19 - "stone set in old mound" by John Ball per County Engineer's John Ball Survey Record Book, Page 329.
1935 - "Found Stone - Set Iron Bar N. side Stone" per County Engineer's Field Book 134, Page 40.
1938, Aug. 24 - "found n.....head 4"x7"x8 1/2" and iron bar 1/2"x24 1/2" lowered stone and set CM on top 12" below ground and placed iron bar on N. side" per County Engineer's W.P.A. Field Book 1010, T87N R14W, Page 70.
1978 - Unrecorded Clapsaddle-Garber Associates Consulting Engineers Survey by Larry M. Neal indicates usage of corner but not type of monumentation.
1984, Oct. 24 - "Found S.C. Mon. (Broken)" by Wayne Claassen per County Recorder's Miscellaneous Book 258, Page 682.
2000, May 31 - "Found No. 4 Rebar in Concrete" by Paul H. Helland per County Recorder's Miscellaneous Book 339, Pages 693 and 695.
2000, June 6 - "Found No. 4 Rebar in concrete 0.6' deep" by Paul H. Helland per County Recorder's Miscellaneous Book 338, Page 688.
2003, Jan. 20 - 'FD. 1/2" I.PIN W/O ID.CAP' by Kirk D. Eschliman per County Recorder's Fee Book #2003 23203.
2007, Aug. 29 - 'FOUND BROKEN S.C.M. 4" DEEP SET PK NAIL IN CENTER OF MON.' by David L. Scheil per County Recorder's Fee Book #2008011622.
2007, Dec. 3 - 'Found broken S.C. Monument as per survey in Misc. Book 258-682 of the Black Hawk county Recorder's Office. Set PK Nail in asphalt patch over center of monument. Also found 1/2" rebars flush with top of broken monument on East edge and West edge of monument' by David L. Scheil per County Recorder's Fee Book #2008011966.

Previous County Engineer's ties indicate that corner is monumented with: "Found stone - set Iron Bar N. side of stone"
'Found n.....head 4"x7"x8 1/2" also I.B. 1/2 x 24 1/2" Set CM 12" Deep'.

Current County Engineer's ties indicate that corner is monumented the same as County Recorder's Fee Book #2008011966 with ties the same.

Corner Recovery =
Searched 5.0' area around the intersection point of record ties with metal detector, excavated 1.0' x 1.0' deep hole and found 'PK' nail over broken up 4" x 4" concrete monument, 0.6' deep. Concrete monument has 5/8" square iron pin, 0.5' deep on West side and 1/2" iron rerod, 0.5' on East side (both for locating purposes only). Monument is in apparent centerline of traveled surface of gravel road North-South and in-line with fenceline West. Location of monument found matches that of record, monument found match that of record, and record ties are within reason. Therefore, tied out 'PK' nail, removed it, set 'MAG' nail in top center of monument and used it as the correct corner. Also, drove rerod and pin to 0.8' deep (below top of concrete monument) for locating purposes only. All ties are plumb distance unless indicated otherwise.

This certificate is being prepared because there is a change to monumentation of record.



I hereby certify that this land surveying document was prepared and the related survey work was performed by me or under my direct personal supervision and that I am a duly licensed Professional Land Surveyor under the laws of the State of Iowa.

ZEB J. STANBROUGH, PLS
Date: 4-8-2015 License number: 19957
My license renewal date is December 31, 2015
Pages or sheets covered by this seal: 1

Corners to be Indexed

Corners	Section	Twp	Range
E 1/4 Cor.	14	T87N	R14W