

WAYNE CLAASSEN ENGINEERING

Document Number: 2008011966

Date: Dec 10, 2007 4:30:00 pm

Aud Fee: 0.00 Rec Fee: 5.00

Trans Tax: 0.00 Rec Management Fee: 1.00

E-Com Fee: 1.00 Non-Standard Page Fee: 0.00

Filed for record in Black Hawk County, Iowa

Judith A. McCarthy, County Recorder

WAYNE CLAASSEN ENGINEERING AND SURVEYING, INC.
P.O. BOX 898 WATERLOO, IOWA 50704-0898

PHONE: (VOICE) 319-235-6294
(FAX) 319-235-0028

UNITED STATES PUBLIC LAND SURVEY CORNER CERTIFICATE

Land Survey Monuments situated in Section 13, Township 87 North, Range 14 West, of the Fifth Principal Meridian, Black Hawk County County, Iowa.

Previously recorded in 338-688 in County Recorder's Office.
(book, page, document number, etc.)

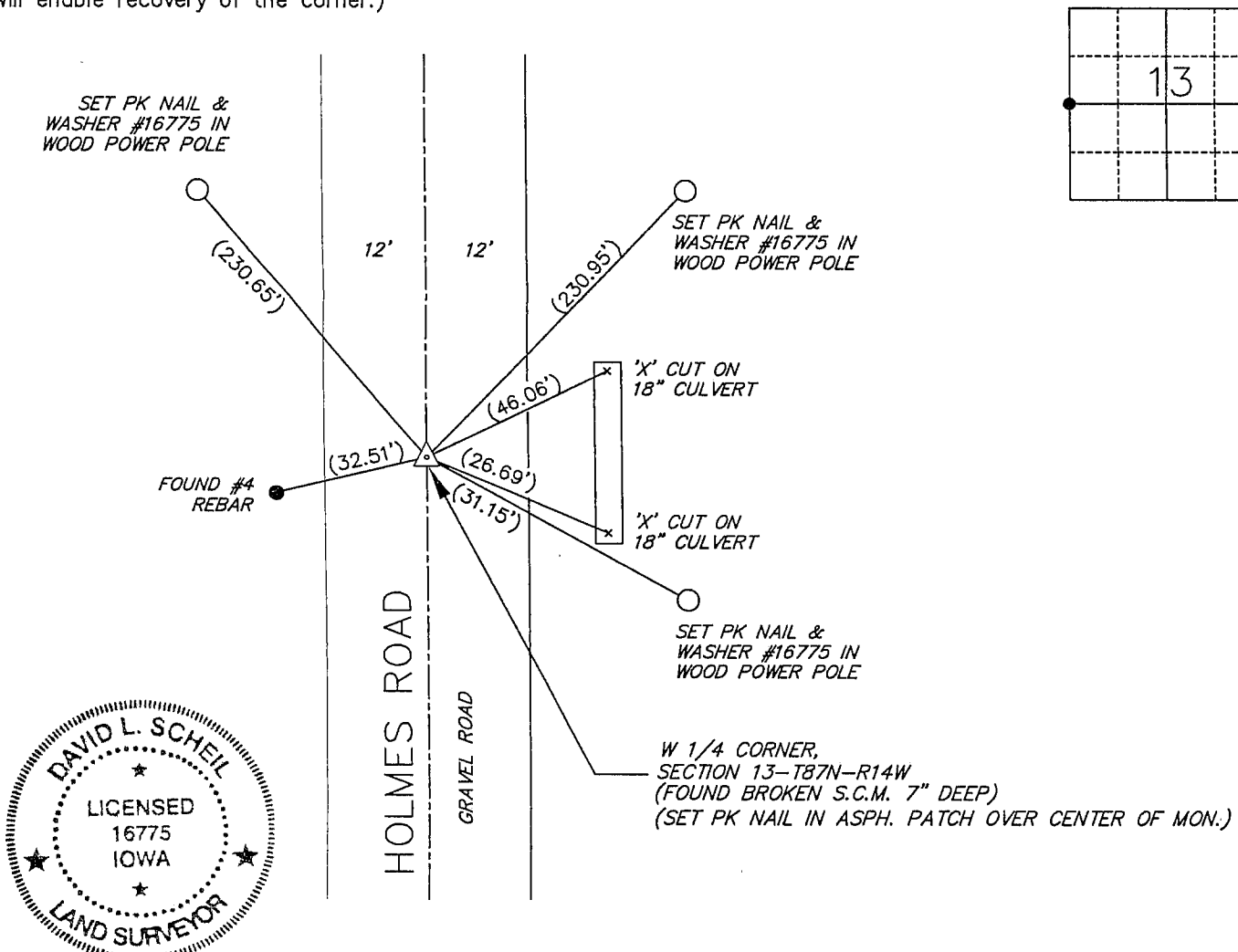
(Show reason for preparing this certificate, the evidence and detailed procedures used in establishing the corner positions and monumentation found or placed.)

Monument Description and Remarks _____

W 1/4 corner: Found broken S.C. Monument as per survey in Misc. Book 258-682 of the Black Hawk County Recorder's Office. Set PK Nail in asphalt patch over center of monument. Also found 1/2" rebars flush with top of broken monument on East edge and West edge of monument.

PLAN - VIEW

(Show a minimum of three reference ties to durable physical objects, relevant monuments and physical conditions that will enable recovery of the corner.)



BK. 631-64

I hereby certify that this land surveying document was prepared and the related survey work was performed by me or under my direct personal supervision and that I am a duly Licensed Land Surveyor under the laws of the State of Iowa.

Signature: _____

David L. Scheil, L.S.

Date: DEC. 03, 2007 Lic. No. 16775

Pages or Sheets Covered by this Seal: THIS SHEET ONLY.

My license renewal date is December 31, 2008

SEAL

List Corners to be Indexed

Corners	Section	Twp	Range
W 1/4 CORNER,	13	87 N	14 W