

WAYNE CLAASSEN ENGINEERING AND SURVEYING, INC.
P.O. BOX 898 WATERLOO, IOWA 50704-0898

PHONE: (VOICE) 319-235-6294
(FAX) 319-235-0028

UNITED STATES PUBLIC LAND SURVEY CORNER CERTIFICATE

Land Survey Monuments situated in Section 87 North, Range
14 West, of the Fifth Principal Meridian, _____ County, Iowa.

Previously recorded in _____ in County Recorder's Office.

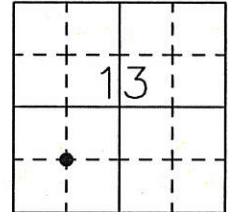
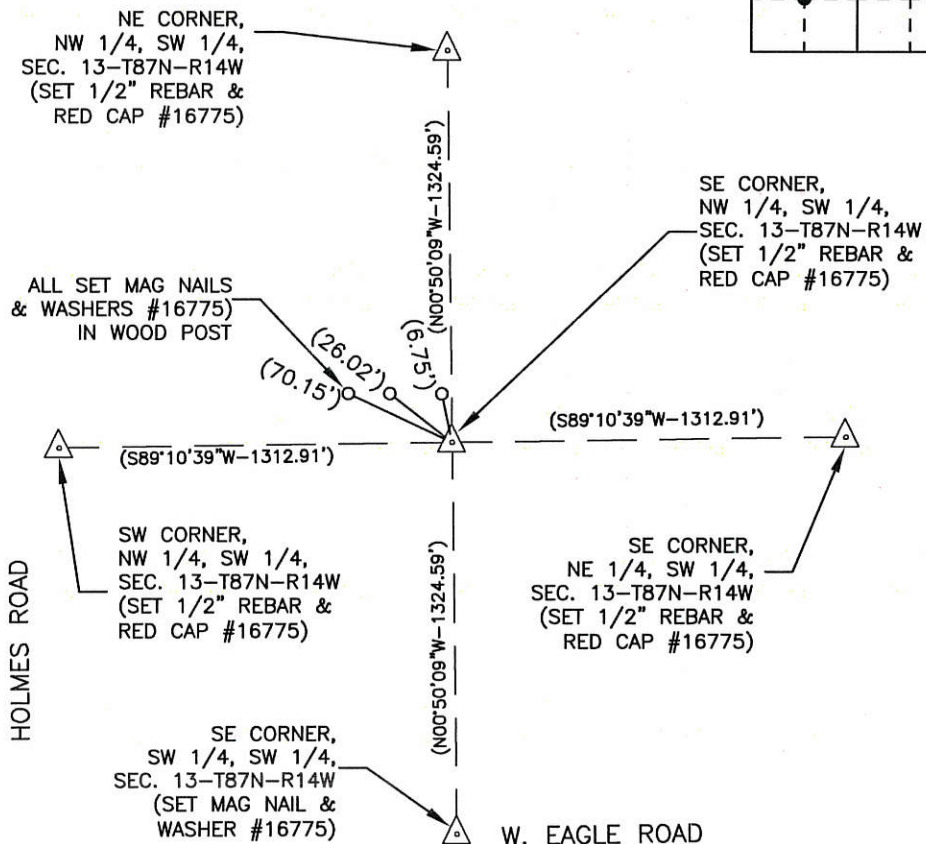
Monument Description and Remarks

Set pin and red cap #16775 at intersection of lines thru opposite 1/4 1/4 corners in the SW 1/4 of Section 13.

Reason for filing certificate:

- ☒ There is no certificate on file with the Recorder's Office.
☐ Accepts corner position which differs from the one shown in above document.
☐ The corner monument was replaced or modified.
☐ The reference ties in above document were incorrect or missing.

IOWA STATE PLANE
COORDINATE SYSTEM
NORTH ZONE
N 3590396.7
E 5210058.1
(FOR REFERENCE ONLY)



748-39

I hereby certify that this land surveying document was prepared and the related survey work was performed by me or under my direct personal supervision and that I am a duly Licensed Land Surveyor under the laws of the State of Iowa.

Signature: _____

David L. Scheil, L.S.

Date: Dec. 12, 2017 Lic. No. 16775

Pages or Sheets Covered by this Seal: THIS SHEET ONLY.

My license renewal date is December 31, 2018

SEAL

List Corners to be Indexed

Corners	Section	Twp	Range
NE CORNER, SW 1/4, SW 1/4,	13	87 N	14 W

