

WAYNE CLAASSEN ENGINEERING AND SURVEYING, INC.
P.O. BOX 898 WATERLOO, IOWA 50704-0898

PHONE: (VOICE) 319-235-6294
(FAX) 319-235-0028

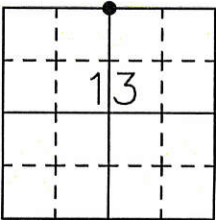
UNITED STATES PUBLIC LAND SURVEY CORNER CERTIFICATE

Land Survey Monuments situated in Section 13, Township 87 North, Range 14 West, of the Fifth Principal Meridian, Black Hawk County, Iowa.
Previously recorded in Document No. 2005-22914 in County Recorder's Office.
(book, page, document number, etc.)

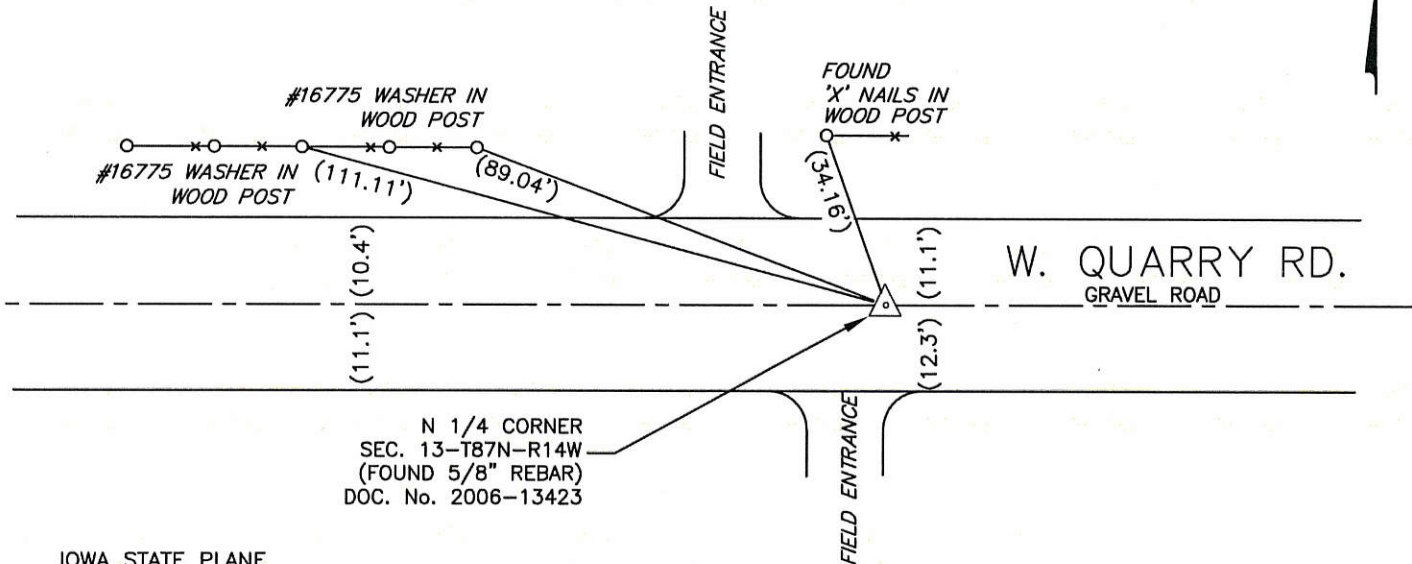
Monument Description and Remarks
Found 5/8" rebar as per above Corner Certificate with ties missing

000.00 DENOTES RECORD DIMENSION
FROM DOCUMENT No. 2005-22914
(000.00) DENOTES FIELD DIMENSION

PLAN - VIEW



- Reason for filing certificate:
- ☐ There is no certificate on file with the Recorder's Office.
 - ☐ Accepts corner position which differs from the one shown in above document.
 - ☐ The corner monument was replaced or modified.
 - ☒ The reference ties in above document were incorrect or missing.



IOWA STATE PLANE
COORDINATE SYSTEM
NORTH ZONE
N 3594390.4
E 5211315.5
(FOR REFERENCE ONLY)

748-38

I hereby certify that this land surveying document was prepared and the related survey work was performed by me or under my direct personal supervision and that I am a duly Licensed Land Surveyor under the laws of the State of Iowa.

Signature: David L. Scheil
David L. Scheil, L.S.
Date: Dec. 12, 2017 Lic. No. 16775

Pages or Sheets Covered by this Seal: THIS SHEET ONLY.

My license renewal date is December 31, 2018

SEAL

List Corners to be Indexed

Corners	Section	Twp	Range
N 1/4 CORNER,	13	87 N	14 W
S 1/4 CORNER,	12	87 N	14 W

