

BLACK HAWK COUNTY ENGINEER

PREPARED BY: BLACK HAWK COUNTY ENGINEERS OFFICE  
316 E. FIFTH STREET, ROOM 211 WATERLOO, IOWA 50703

PH.# (319) 833-3008  
FAX.# (319) 833-3139

SLSI 9-94  
CERT 12-96

UNITED STATES PUBLIC LAND SURVEY CORNER CERTIFICATE OF  
Land Survey Monuments situated in Section 13 , Township 87 N ,  
Range 14 W , of the Fifth Principal Meridian, BLACK HAWK County, Iowa.  
Previously recorded in FEE Book N/A, Page N/A, in County Recorder's Office.

(Show reason for preparing this certificate, the evidence and detailed procedures used in establishing the corner positions and monumentation found or placed.)

Monument Description and Remarks: FND. 60d SPIKE W/ ORANGE RIBBON  
@ SURFACE. TEMP. REFERENCED, AND EXCAVATED TO FND. #5 RBR. W/ RED  
RIBBON @ -0.40' DP. & ALIGNED w/ FNC. SOUTH. 60d SPIKE DISCARDED.  
CORNER FILED TO UPDATE RECORD, AND USED TO EST. NORTH LINE OF  
N.E. 1/4 SAID SECTION FOR BRIDGE PRELIM. SURVEY N. OF N.E. COR.

(Show a minimum of three reference ties to durable physical objects, relevant monuments and physical conditions that will enable recovery of the corner.)

## PLAN - VIEW

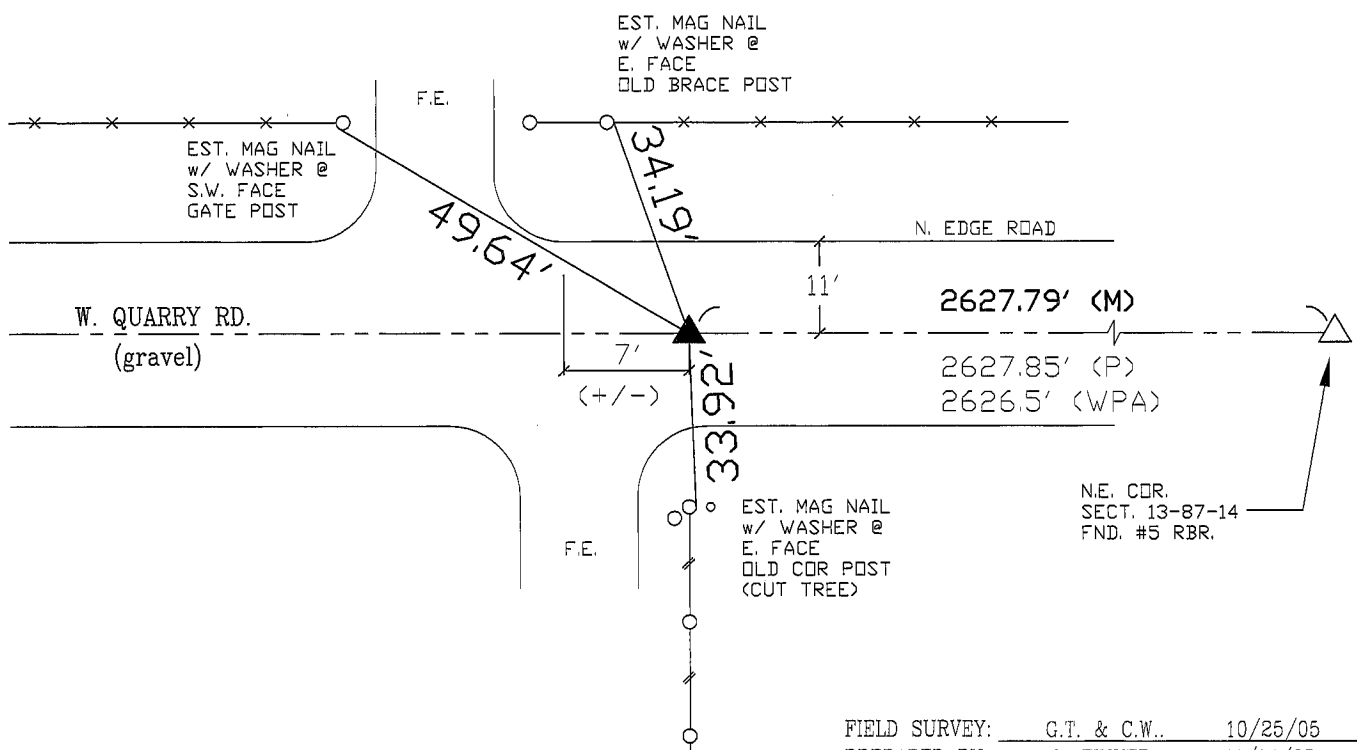
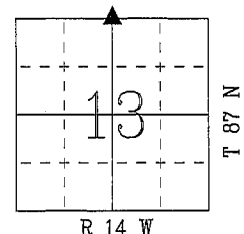
NOT TO SCALE

NOTE:

TIE DISTANCES MEAS. PLUMB (H.D.)

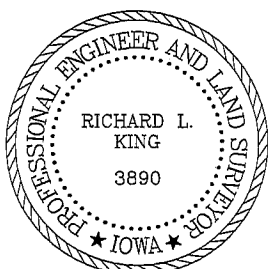
WASHER = DENOTES STL. 2" DIA. STAMPED  
"B.H. COUNTY LAND CORNER REF."

WPA MEAS. PER 8/23/1938



FIELD SURVEY: G.T. & C.W. 10/25/05  
PREPARED BY: G. TINKER 11/14/05

## CERTIFICATION



I hereby certify that this land surveying document was prepared and the related survey work was performed by me or under my direct personal supervision and that I am a duly licensed Land Surveyor under the laws of the State of Iowa.

Richard E. King 11/6/05  
(date)

License Number 3890

My license renewal date is December 31, 2005

Pages or sheets covered by this seal:

This Land Corner Certificate Only.

LIST CORNERS TO BE INDEXED

<u>Corner</u>	<u>Section</u>	<u>- Township</u>	<u>- Range</u>
N. 1/4	13	87 N	14 W
S. 1/4	12	87 N	14 W