



PREPARED BY  
AND RETURN THIS ORIGINAL DOCUMENT TO:  
JON MYERS PLS  
IOWA DEPARTMENT OF TRANSPORTATION  
DISTRICT 1 OFFICE  
1020 SOUTH 4TH STREET  
AMES, IOWA 50010  
PHONE 515-239-1593

RESERVED FOR COUNTY RECORDER'S USE

Number: 202400006575  
Recorded: 11/17/2023 at 1:40:23.0 PM  
County Recording Fee: \$7.00  
Iowa E-Filing Fee: \$3.00  
Combined Fee: \$10.00  
Revenue Tax:  
Sandie L. Smith, RECORDER  
Black Hawk County, Iowa

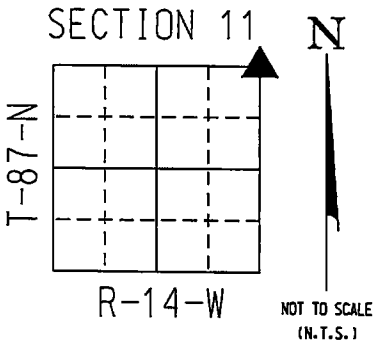
UNITED STATES PUBLIC LAND SURVEY CORNER CERTIFICATE

Land Survey Monument(s) situated in Section 11, Township 87 North, Range 14 West, of the Fifth Principal Meridian, BLACKHAWK County, Iowa. IDOT Project NHSN-063-5(64)--2R-86  
Previously recorded in N/A in the County Recorder's Office.

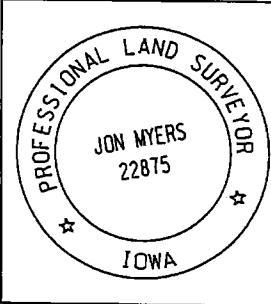
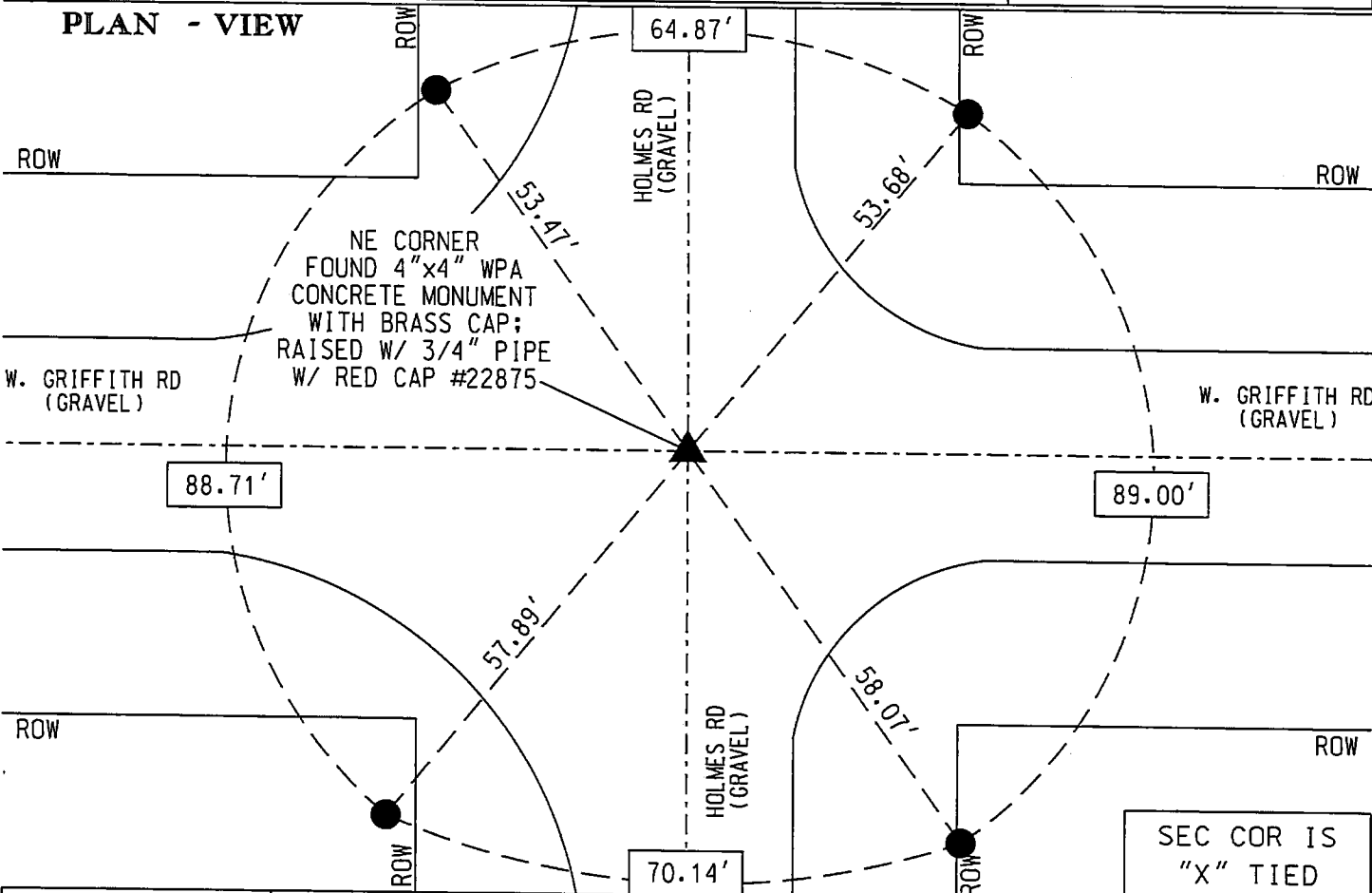
NE CORNER 11-87-14:

NO CORNER CERTIFICATE OF RECORD FOUND FOR THIS CORNER. BLACKHAWK COUNTY ENGINEERING TIES SHOW THIS CORNER TO BE A 4" x 4" WPA CONCRETE MONUMENT WITH BRASS DISC IN CENTER. ENGINEERING TIES ARE OLD AND OUTDATED - ROAD WIDTH HAS INCREASED AND THE FENCES THAT THE CORNER WAS TIED OUT TO ARE GONE. USED 1/2 MILE DISTANCE FROM N 1/4 CORNER SHOWN ON ENGINEERING TIE INTERSECTED WITH AN APPROXIMATION OF WHERE THE OLD SOUTHEASTERLY ROW FENCE POST WAS LOCATED FOR SEARCH POINT. SEARCHED AREA WITH LOCATOR AND FOUND FAINT SOUND. DUG 2' x 2' HOLE - 12" DEEP AND FOUND A 3/4" REROD BENT GOING INTO GROUND. REMOVED REROD - DUG DOWN FURTHER AND FOUND SAID WPA CONCRETE MONUMENT - 25" DEEP. FOUND CORNER MATCHES THE POSITION AND MONUMENT SHOWN ON BLACKHAWK ENGINEERING TIES AND ACCEPTED IT AS THE SECTION CORNER. RAISED CORNER WITH A 3/4" PIPE WITH RED CAP #22875 TO A DEPTH OF 4" FROM SURFACE OF ROAD.

A NEW CORNER CERTIFICATE IS CREATED BECAUSE THERE IS NONE ON FILE WITH THE BLACK HAWK COUNTY RECORDER'S OFFICE.



COORDINATE VALUE WAS ESTABLISHED UTILIZING NAD83 (2011)(EPOCH 2010) DATUM USING THE IOWA REGIONAL COORDINATE SYSTEM ZONE 5 PROJECTION IN U.S. SURVEY FEET  
NE CORNER - #LW8054  
N - 8797983.0430  
E - 15449591.5320



I hereby certify that this Land Surveying document was prepared by me or under my direct personal supervision and that I am a duly licensed Professional Land Surveyor under the laws of the State of Iowa.

Signature: Jon Myers  
Date: November 8, 2023 Lic. No. 22875  
My license renewal date is December 31, 2024.  
Pages or sheets covered by this seal. 1

- = FND CORNER
- = SET 5/8 REROD
- = FND CONC. MON.
- ⌵ = FD IDOT RAIL
- ⊕ = FD/SET IDOT PI

SEC COR IS "X" TIED		
Corner to be Indexed		
NE CORNER		
Sec.	Twp.	Range
11	87	14
Drawn by: JMM		