



PREPARED BY  
AND RETURN THIS ORIGINAL DOCUMENT TO:  
JON MYERS PLS  
IOWA DEPARTMENT OF TRANSPORTATION  
DISTRICT 1 OFFICE  
1020 SOUTH 4TH STREET  
AMES, IOWA 50010  
PHONE 515-239-1593

RESERVED FOR COUNTY RECORDER'S USE

Number: 202400006574  
Recorded: 11/17/2023 at 1:40:23.0 PM  
County Recording Fee: \$7.00  
Iowa E-Filing Fee: \$3.00  
Combined Fee: \$10.00  
Revenue Tax:  
Sandie L. Smith, RECORDER  
Black Hawk County, Iowa

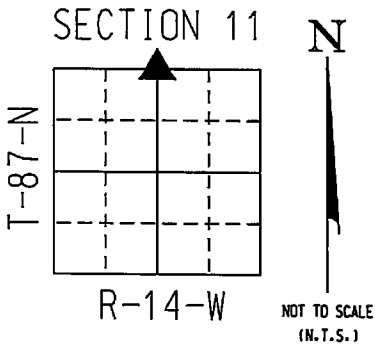
UNITED STATES PUBLIC LAND SURVEY CORNER CERTIFICATE

Land Survey Monument(s) situated in Section 11, Township 87 North, Range 14 West, of  
the Fifth Principal Meridian, BLACKHAWK County, Iowa. IDOT Project NHSN-063-5(64)--2R-86  
Previously recorded in N/A in the  
County Recorder's Office.

N 1/4 CORNER 11-87-14:

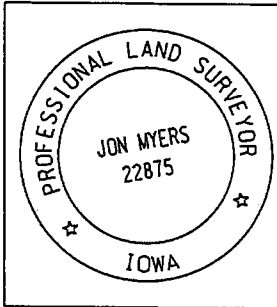
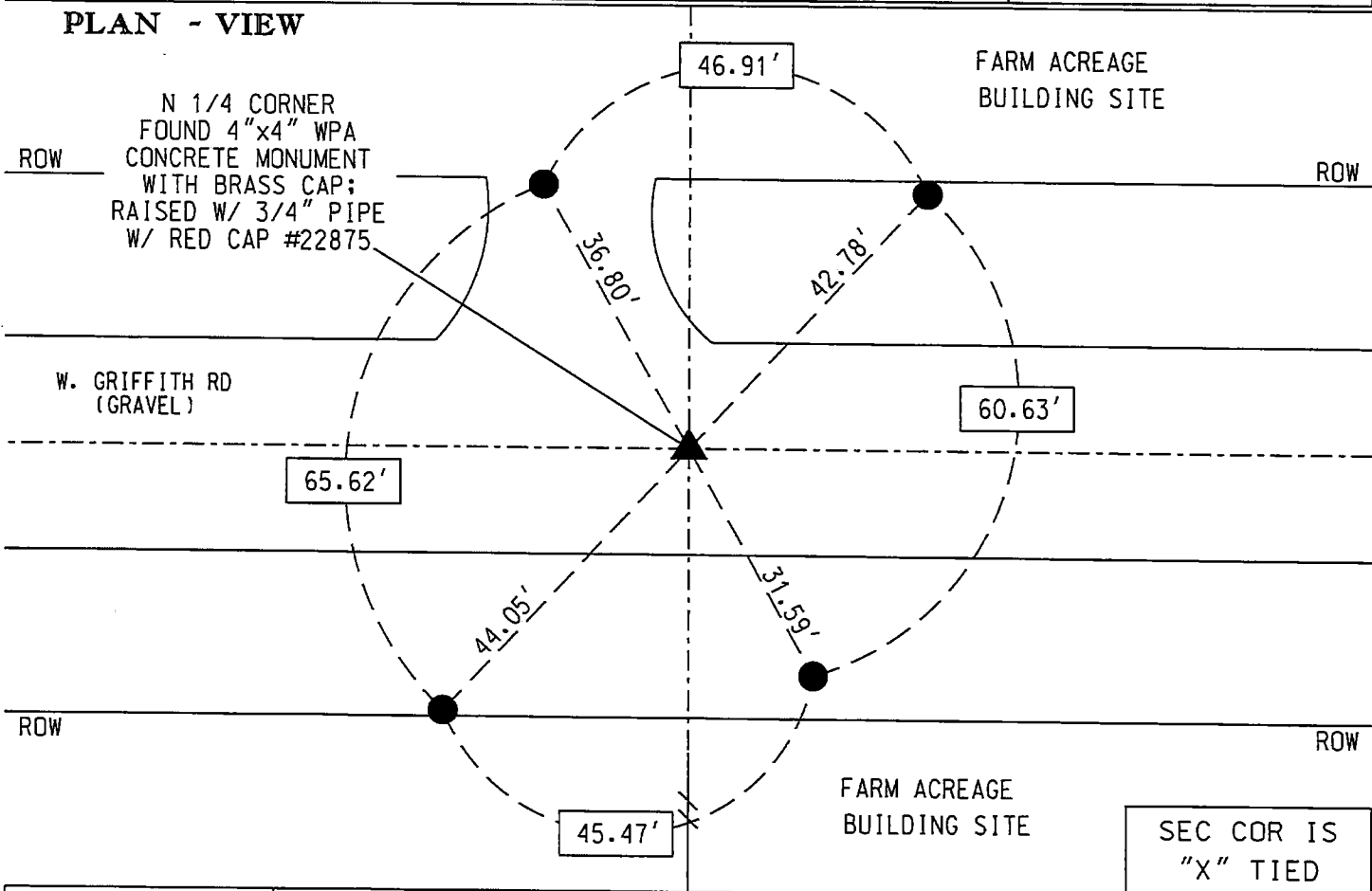
I WAS UNABLE TO FIND A CORNER CERTIFICATE ON FILE FOR THIS CORNER IN THE  
BLACKHAWK COUNTY RECORDERS OFFICE. BLACKHAWK ENGINEER TIES CALL FOR A 4" X  
4" WPA CONCRETE MONUMENT WITH BRASS CAP SET OVER LIMESTONE SECTION CORNER.  
IDOT ENGINEER TIES CALL FOR A FOUND DRILL BIT ABOVE CONCRETE MONUMENT.  
MEASURING FROM LAST REMAINING IDOT TIE - PULLED DISTANCE AND SEARCHED AREA  
WITH LOCATOR AND FOUND DRILL BIT - 1" DEEP. REMOVED DRILL BIT - DUG DOWN AND  
FOUND SAID WPA CONCRETE MONUMENT - 18" DEEP. FOUND CONCRETE MONUMENT MATCHES  
THE MONUMENT CALLED FOR IN BLACKHAWK COUNTY AND IDOT ENGINEERING TIES AND  
ACCEPTED IT AS THE SECTION CORNER. RAISED MONUMENT WITH 3/4" PIPE WITH RED  
CAP #22875 TO 4" FROM SURFACE OF GRAVEL ROAD.

A NEW CORNER CERTIFICATE IS CREATED BECAUSE THERE IS NONE ON FILE WITH THE  
BLACK HAWK COUNTY RECORDER.



COORDINATE VALUE WAS  
ESTABLISHED UTILIZING  
NAD83 (2011)(EPOCH 2010)  
DATUM USING THE IOWA  
REGIONAL COORDINATE  
SYSTEM ZONE 5  
PROJECTION  
IN U.S. SURVEY FEET  
  
N 1/4 CORNER - #LW8048B  
N - 8797987.7160  
E - 15446930.9420

PLAN - VIEW



I hereby certify that this Land Surveying document was  
prepared by me or under my direct personal supervision and  
that I am a duly licensed Professional Land Surveyor under  
the laws of the State of Iowa.

Signature: \_\_\_\_\_  
Date: November 8, 2023 Lic. No. 22875  
My license renewal date is December 31, 2024.  
Pages or sheets covered by this seal. 1

- = FND CORNER
- = SET 5/8 REROD
- ◻ = FND CONC. MON.
- ⌂ = FD IDOT RAIL
- ⦿ = FD/SET IDOT PI

SEC COR IS "X" TIED		
Corner to be Indexed		
N 1/4 COR		
Sec.	Twp.	Range
11	87	14
Drawn by: JMM		