



PREPARED BY
AND RETURN THIS ORIGINAL DOCUMENT TO:
JON MYERS PLS
IOWA DEPARTMENT OF TRANSPORTATION
DISTRICT 1 OFFICE
1020 SOUTH 4TH STREET
AMES, IOWA 50010
PHONE 515-239-1593

RESERVED FOR COUNTY RECORDER'S USE

Number: 202400006573
Recorded: 11/17/2023 at 1:40:23.0 PM
County Recording Fee: \$7.00
Iowa E-Filing Fee: \$3.00
Combined Fee: \$10.00
Revenue Tax:
Sandie L. Smith, RECORDER
Black Hawk County, Iowa

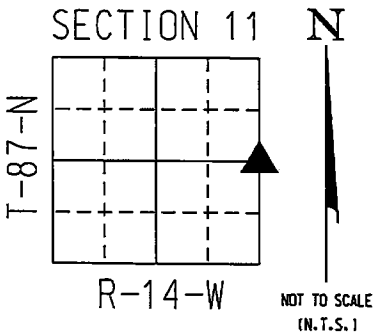
UNITED STATES PUBLIC LAND SURVEY CORNER CERTIFICATE

Land Survey Monument(s) situated in Section 11, Township 87 North, Range 14 West, of the Fifth Principal Meridian, BLACKHAWK County, Iowa. IDOT Project NHSN-063-5(64)--2R-86
Previously recorded in N/A in the County Recorder's Office.

E 1/4 CORNER 11-87-14:

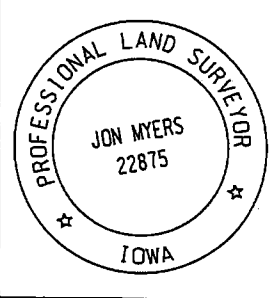
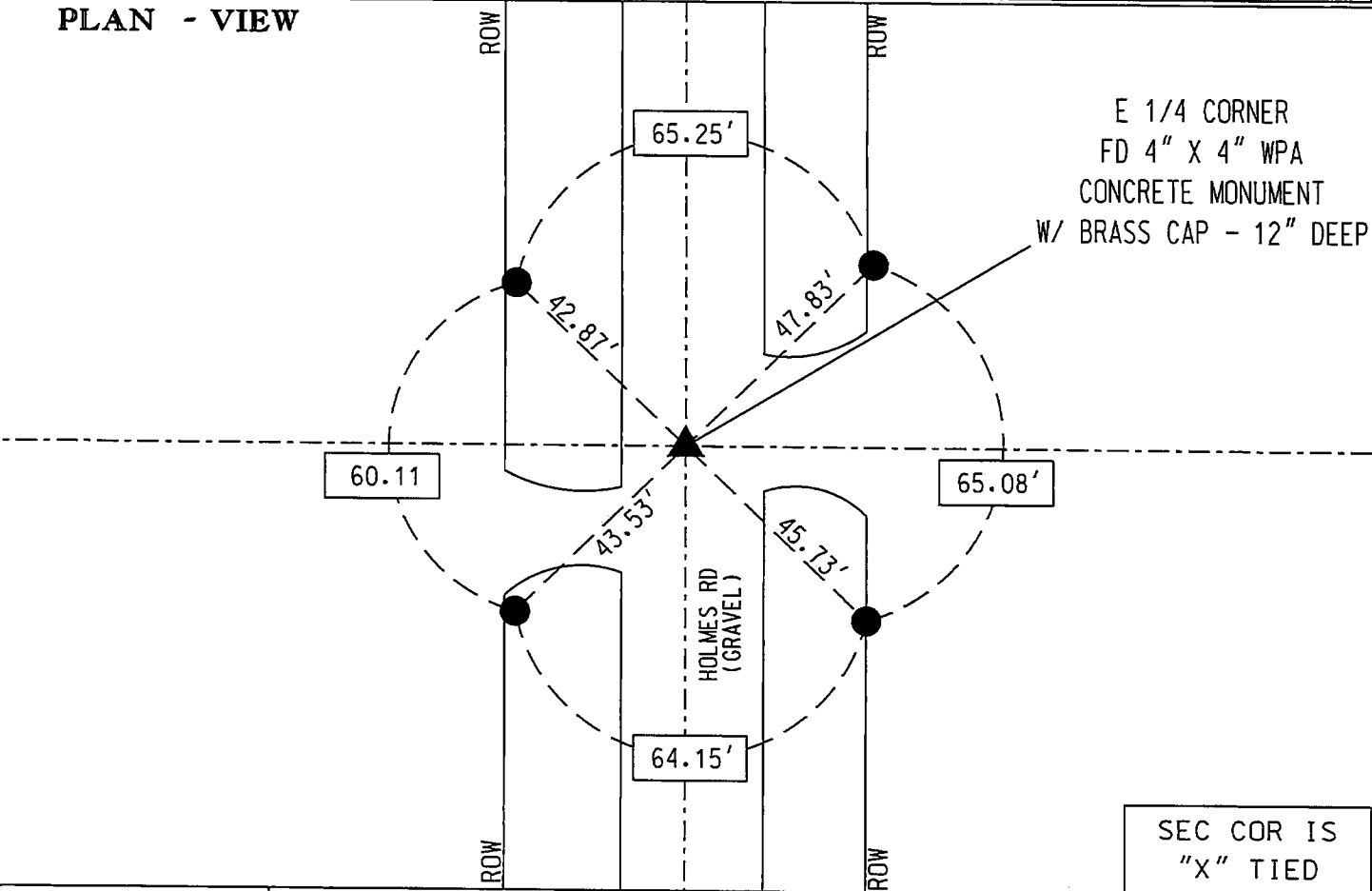
I WAS UNABLE TO FIND A CORNER CERTIFICATE FOR THIS CORNER AT THE COUNTY RECORDER'S OFFICE. BOTH IDOT AND BLACKHAWK COUNTY ENGINEERING TIES SHOW THIS CORNER TO BE A 4" x 4" WPA CONCRETE MONUMENT WITH BRASS DISC IN CENTER. NEWEST AVAILABLE REFERENCE TIES ARE OUT OF DATE - TIED TO FENCES THAT HAVE BEEN REMOVED. SEARCHED AREA WITH MAGNETIC LOCATOR BUT WAS UNABLE TO FIND ANY SUITABLE READINGS. CREATED A SEARCH POINT TO DIG BY USING A LINE FROM THE NE CORNER TO THE SE CORNER USING COMPUTED DISTANCES SHOWN ON BLACKHAWK WPA SECTION CORNER TIE FOR THE NE CORNER 11-87-14. USING A BACKHOE FROM IDOT GARAGE - DUG A 4' x 10' HOLE AND FOUND SAID WPA CONCRETE MONUMENT - 12" DEEP. DURING EXCAVATION - ACCIDENTLY BROKE OFF TOP 12" PIECE OF MONUMENT FROM THE BASE. RESET TOP OF MONUMENT ON ITS BASE AND REINFORCED MONUMENT BY SETTING 4 RERODS - 1 ON EACH SIDE - AND STRUNG METAL WIRE AROUND RERODS TO HOLD THE TOP OF MONUMENT IN PLACE. CONCRETE MONUMENT FOUND MATCHES THE ONE CALLED FOR IN BLACKHAWK COUNTY ENGINEERING TIES AND ACCEPTED IT AS THE E 1/4 CORNER.

A NEW CORNER CERTIFICATE IS CREATED BECAUSE THERE IS NONE ON FILE WITH THE BLACKHAWK COUNTY RECORDER'S OFFICE.



COORDINATE VALUE WAS ESTABLISHED UTILIZING NAD83 (2011)(EPOCH 2010) DATUM USING THE IOWA REGIONAL COORDINATE SYSTEM ZONE 5 PROJECTION IN U.S. SURVEY FEET
E 1/4 CORNER - #8041
N - 8795333.1520
E - 15449586.1100

PLAN - VIEW



I hereby certify that this Land Surveying document was prepared by me or under my direct personal supervision and that I am a duly licensed Professional Land Surveyor under the laws of the State of Iowa.
Signature: _____
Date: November 8, 2023 Jon Myers
My license renewal date is December 31, 2024.
Pages or sheets covered by this seal. 1

- = FND CORNER
- = SET 5/8 REROD
- ◻ = FND CONC. MON.
- ⌚ = FD IDOT RAIL
- ⊙ = FD/SET IDOT PI

SEC COR IS "X" TIED		
Corner to be Indexed		
E 1/4 COR		
Sec.	Twp.	Range
11	87	14
Drawn by: JMM		