



PREPARED BY
AND RETURN THIS ORIGINAL DOCUMENT TO:
JON MYERS PLS
IOWA DEPARTMENT OF TRANSPORTATION
DISTRICT 1 OFFICE
1020 SOUTH 4TH STREET
AMES, IOWA 50010
PHONE 515-239-1593

RESERVED FOR COUNTY RECORDER'S USE

Number: 202400006572
Recorded: 11/17/2023 at 1:40:22.0 PM
County Recording Fee: \$7.00
Iowa E-Filing Fee: \$3.00
Combined Fee: \$10.00
Revenue Tax:
Sandie L. Smith, RECORDER
Black Hawk County, Iowa

UNITED STATES PUBLIC LAND SURVEY CORNER CERTIFICATE

Land Survey Monument(s) situated in Section 11, Township 87 North, Range 14 West, of the Fifth Principal Meridian, BLACKHAWK County, Iowa. IDOT Project NHSN-063-5(64)--2R-86
Previously recorded in N/A in the County Recorder's Office.

CENTER OF SECTION 11-87-14:

I WAS UNABLE TO FIND A CORNER CERTIFICATE FOR THIS CORNER IN THE BLACKHAWK COUNTY RECORDER'S OFFICE. I WAS ALSO UNABLE TO FIND ANY ENGINEERING TIES FROM BLACKHAWK COUNTY OR IOWA DOT FOR THIS CORNER. SEARCHED AREA AROUND A THEORETICAL CENTER LOCATION ESTABLISHED PER BLM METHODS - DUG 2' x 2' - 12" DEEP HOLE CENTERED ON THEORETICAL CENTER LOCATION BUT FOUND NOTHING. ALSO SEARCHED AREA WHERE EAST/WEST SECTION LINE INTERSECTS FENCELINE NORTH/SOUTH BUT STILL FOUND NOTHING. ESTABLISHED CENTER OF SECTION ONLINE BETWEEN W 1/4 CORNER AND E 1/4 CORNER AND IN LINE WITH FENCELINE RUNNING NORTH/SOUTH PER LOCAL EVIDENCE. SET 3/4" PIPE WITH RED CAP #22875 - 2" EXPOSED ON TOP OF GRASS STRIP AND IN FENCELINE AND ACCEPTED IT AS THE CENTER OF SECTION.

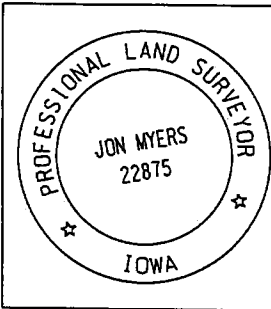
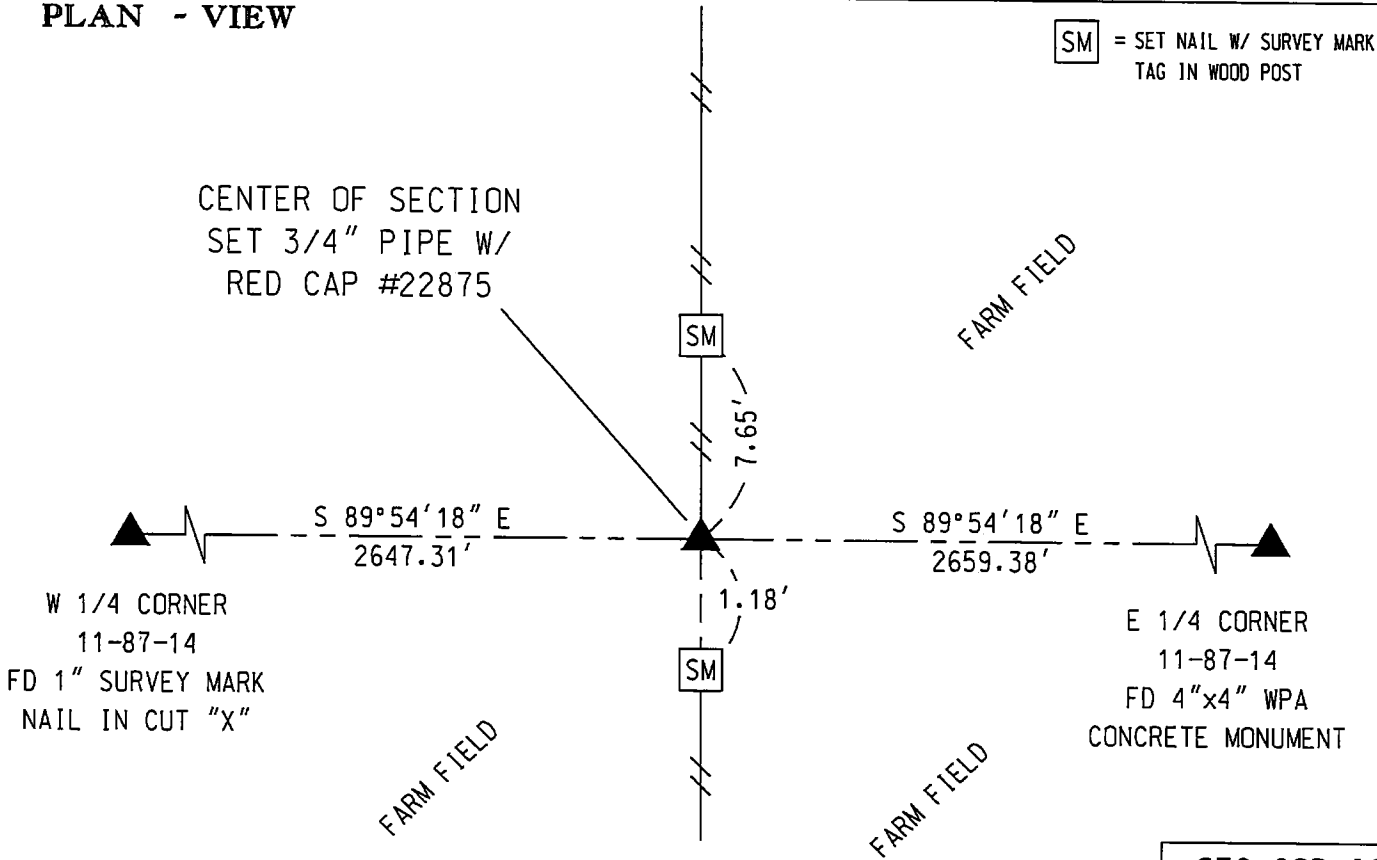
A NEW CORNER CERTIFICATE IS CREATED BECAUSE THERE IS NONE ON FILE WITH THE BLACKHAWK COUNTY RECORDER'S OFFICE.

SECTION 11
T-87-N
R-14-W
N
NOT TO SCALE
(N.T.S.)

COORDINATE VALUE WAS
ESTABLISHED UTILIZING
NAD83 (2011)(EPOCH 2010)
DATUM USING THE IOWA
REGIONAL COORDINATE
SYSTEM ZONE 5
PROJECTION
IN U.S. SURVEY FEET

CENTER OF SEC. - #JM8042
N - 8795337.5570
E - 15446926.7350

PLAN - VIEW



I hereby certify that this Land Surveying document was prepared by me or under my direct personal supervision and that I am a duly licensed Professional Land Surveyor under the laws of the State of Iowa.
Signature: _____
Date: November 8, 2023 Lic. No. 22875
My license renewal date is December 31, 2024.
Pages or sheets covered by this seal. 1

- = FND CORNER
- = SET 5/8 REROD
- ◻ = FND CONC. MON.
- ⌵ = FD IDOT RAIL
- ⊙ = FD/SET IDOT PI

SEC COR IS NOT "X" TIED		
Corner to be Indexed		
CENTER		
Sec.	Twp.	Range
11	87	14
Drawn by: JMM		