



Doc ID: 005263950001 Type: GEN
Kind: CORNER
Recorded: 08/30/2013 at 02:12:16 PM
Fee Amt: \$7.00 Page 1 of 1
Black Hawk County Iowa
JUDITH A MCCARTHY RECORDER
File 2014-00004811

WAYNE CLAASSEN ENGINEERING AND SURVEYING, INC.
P.O. BOX 898 WATERLOO, IOWA 50704-0898

PHONE: (VOICE) 319-235-6294
(FAX) 319-235-0028

UNITED STATES PUBLIC LAND SURVEY CORNER CERTIFICATE

Land Survey Monuments situated in Section 10, Township 87 North, Range 14 West, of the Fifth Principal Meridian, Black Hawk County, Iowa.

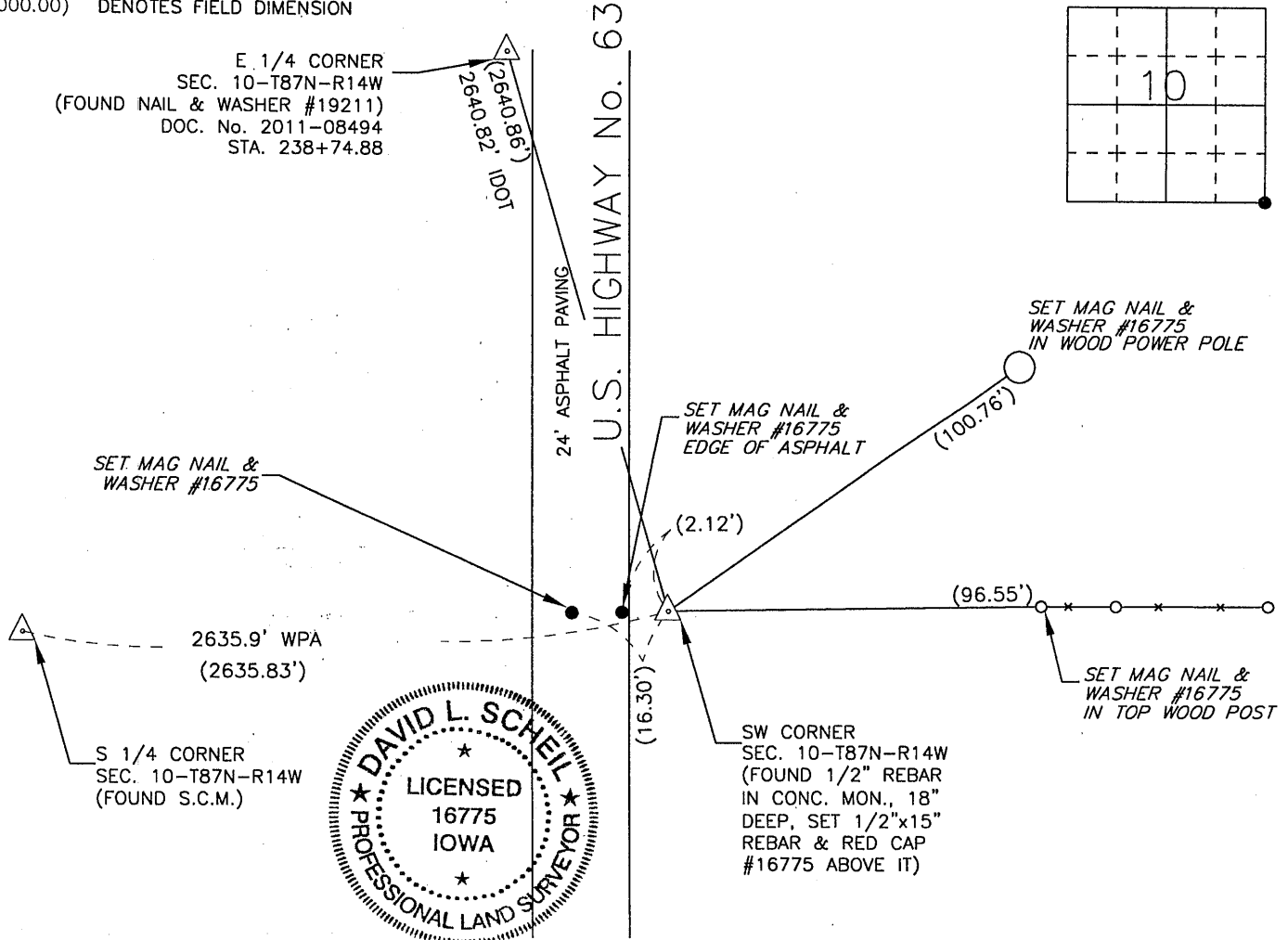
Previously recorded in _____ in County Recorder's Office.
(book, page, document number, etc.)

Monument Description and Remarks

From field notes from Black Hawk County Engineer's Office (Dated Aug. 24, 1938): "Found lead Plug in Pavement." The IDOT Land Corner Survey, Project No. FN-63-6(2)--21-07 (Dated Jan. 1970) shows a found nail in asphalt above lead plug. Found 1/2" rebar in concrete monument 18" deep. Set 1/2"x15" rebar and red cap #16775 above it. This certificate was filed because there is no certificate on file.

000.00 DENOTES RECORD DIMENSION
(000.00) DENOTES FIELD DIMENSION

PLAN - VIEW



I hereby certify that this land surveying document was prepared and the related survey work was performed by me or under my direct personal supervision and that I am a duly Licensed Land Surveyor under the laws of the State of Iowa.

Signature: _____

David L. Scheil, L.S.

Date: Aug 22, 2013 Lic. No. 16775

Pages or Sheets Covered by this Seal: THIS SHEET ONLY.

My license renewal date is December 31, 2014

SEAL

List Corners to be Indexed

Corners	Section	Twp	Range
SE CORNER,	10	87 N	14 W
SW CORNER,	11	87 N	14 W
NE CORNER,	15	87 N	14 W
NW CORNER,	14	87 N	14 W

14.00-SB

(7.00)