

WAYNE CLAASSEN ENGINEERING AND SURVEYING, INC.  
P.O. BOX 898 WATERLOO, IOWA 50704-0898

PHONE: (VOICE) 319-235-6294  
(FAX) 319-235-0028

## UNITED STATES PUBLIC LAND SURVEY CORNER CERTIFICATE

Land Survey Monuments situated in Section 10, Township 87 North, Range 14 West, of the Fifth Principal Meridian, Black Hawk County, Iowa.

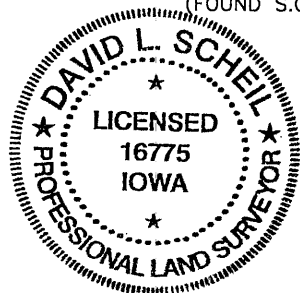
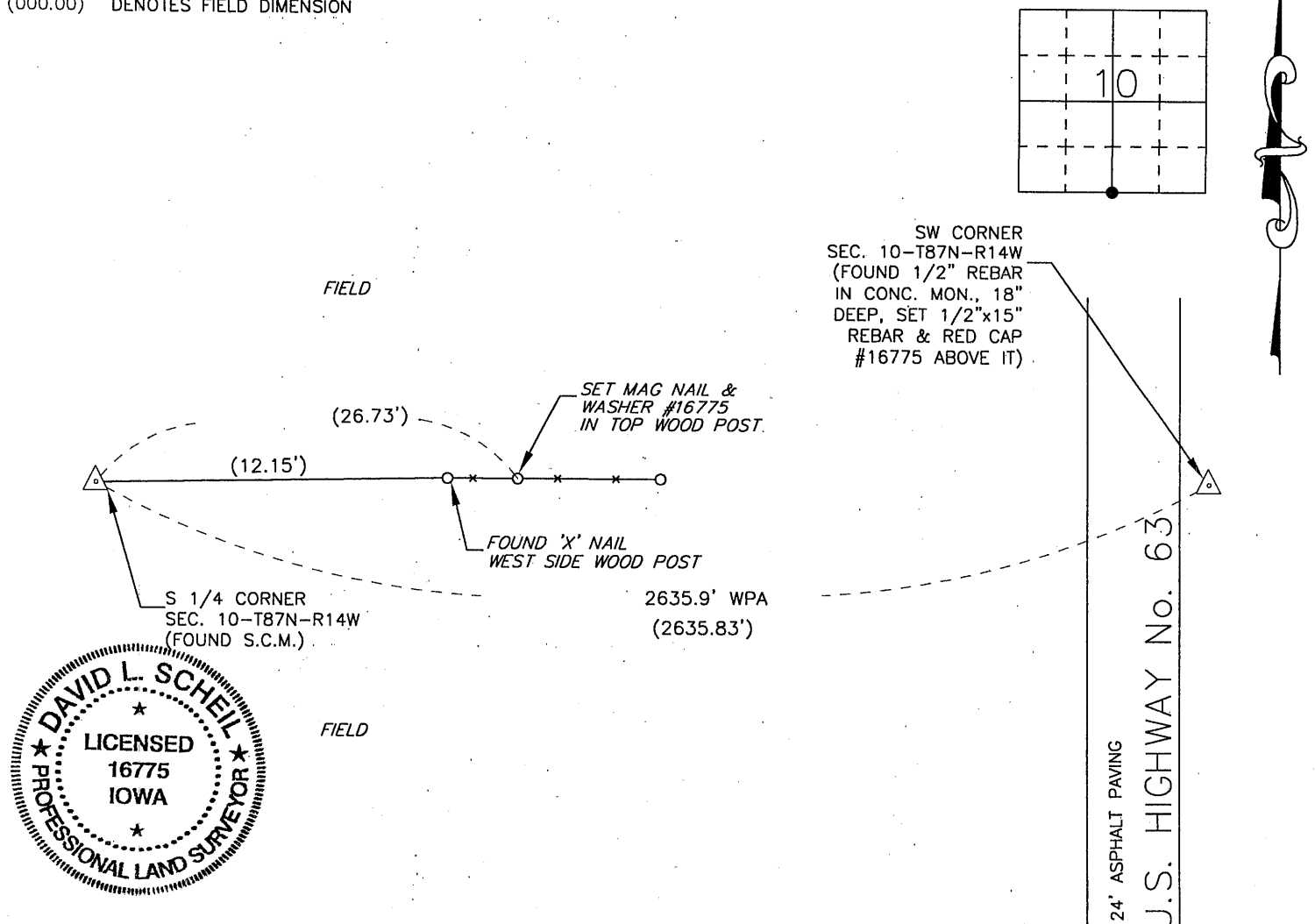
Previously recorded in \_\_\_\_\_ (book, page, document number, etc.) in County Recorder's Office.

### Monument Description and Remarks

From field notes from Black Hawk County Engineer's Office (Dated Sept. 7, 1938): "N 1/4 Cor. Sec. 15-87-14 found frost broken limestone 6"x10"x15" lowered stone and set C.M. on top 12" underground." The IDOT Land Corner Survey, Project No. FN-63-6(2)--21-07 (Dated Jan. 1970) shows a found nail in asphalt. Found C.M. This certificate was filed because there is no certificate on file.

000.00 DENOTES RECORD DIMENSION  
(000.00) DENOTES FIELD DIMENSION

### PLAN - VIEW



I hereby certify that this land surveying document was prepared and the related survey work was performed by me or under my direct personal supervision and that I am a duly Licensed Land Surveyor under the laws of the State of Iowa.

Signature: \_\_\_\_\_

David L. Scheil, L.S.

Date: Aug 22, 2013 Lic. No. 16775

Pages or Sheets Covered by this Seal: THIS SHEET ONLY.

My license renewal date is December 31, 2014

SEAL

### List Corners to be Indexed

Corners	Section	Twp	Range
S 1/4 CORNER,	10	87 N	14 W
N 1/4 CORNER,	15	87 N	14 W