



SMARTER | SIMPLER | CUSTOMER DRIVEN

PREPARED BY
AND RETURN THIS ORIGINAL DOCUMENT TO:
JON MYERS PLS
IOWA DEPARTMENT OF TRANSPORTATION
DISTRICT 1 OFFICE
1020 SOUTH 4TH STREET
AMES, IOWA 50010
PHONE 515-239-1593

RESERVED FOR COUNTY RECORDER'S USE

2024-15105
RECORDED: 05/31/2024 03:50:00 PM
RECORDING FEE: \$7.00
IOWA E-FILING FEE: \$3.00
COMBINED FEE: \$10.00
REVENUE TAX: \$0.00
SANDIE L. SMITH, RECORDER
BLACK HAWK COUNTY, IOWA

UNITED STATES PUBLIC LAND SURVEY CORNER CERTIFICATE

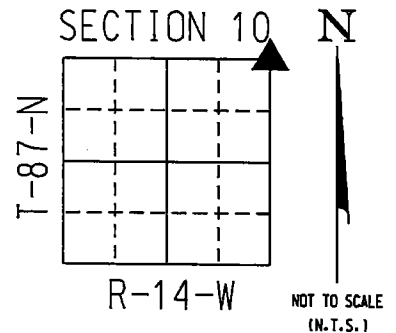
Land Survey Monument(s) situated in Section 10, Township 87 North, Range 14 West, of the Fifth Principal Meridian, BLACKHAWK County, Iowa. IDOT Project NHSX-063-5(72)--3H-86
Previously recorded in BK 345 PG 741 in the
County Recorder's Office.

NE CORNER 10-87-14:

A SURVEY OF THE US 63 HIGHWAY CORRIDOR WAS CONDUCTED BEFORE CONSTRUCTION OF PCC MAT. OVERLAY, FOR IOWA D.O.T. PROJECT: NHSX-063-5(72)--3H-86
A CONCRETE MONUMENT WITH 1/2" REROD IN CENTER - 18" DEEP BELOW TOP OF ASPHALT SURFACE WAS FOUND BY A CORNER CERTIFICATE BY PAUL H. HELLAND AND IOWA DOT REFERENCE TIES. ACCEPTED FOUND CONCRETE MONUMENT AS THE SECTION CORNER MONUMENT FOR THE NE CORNER SEC. 10-87N-14W. POSITION OF SAID MONUMENT WAS PRESERVED BY PERFORMING REDUNDANT R.T.K. GPS OBSERVATIONS.

AFTER CONSTRUCTION, RE-SET CORNER WITH A 1" x 3" LONG STEEL SURVEY MARK NAIL SET INSIDE OF A CUT "X" IN CONCRETE ROAD AT THE LOCATION OF FOUND CONCRETE MONUMENT.

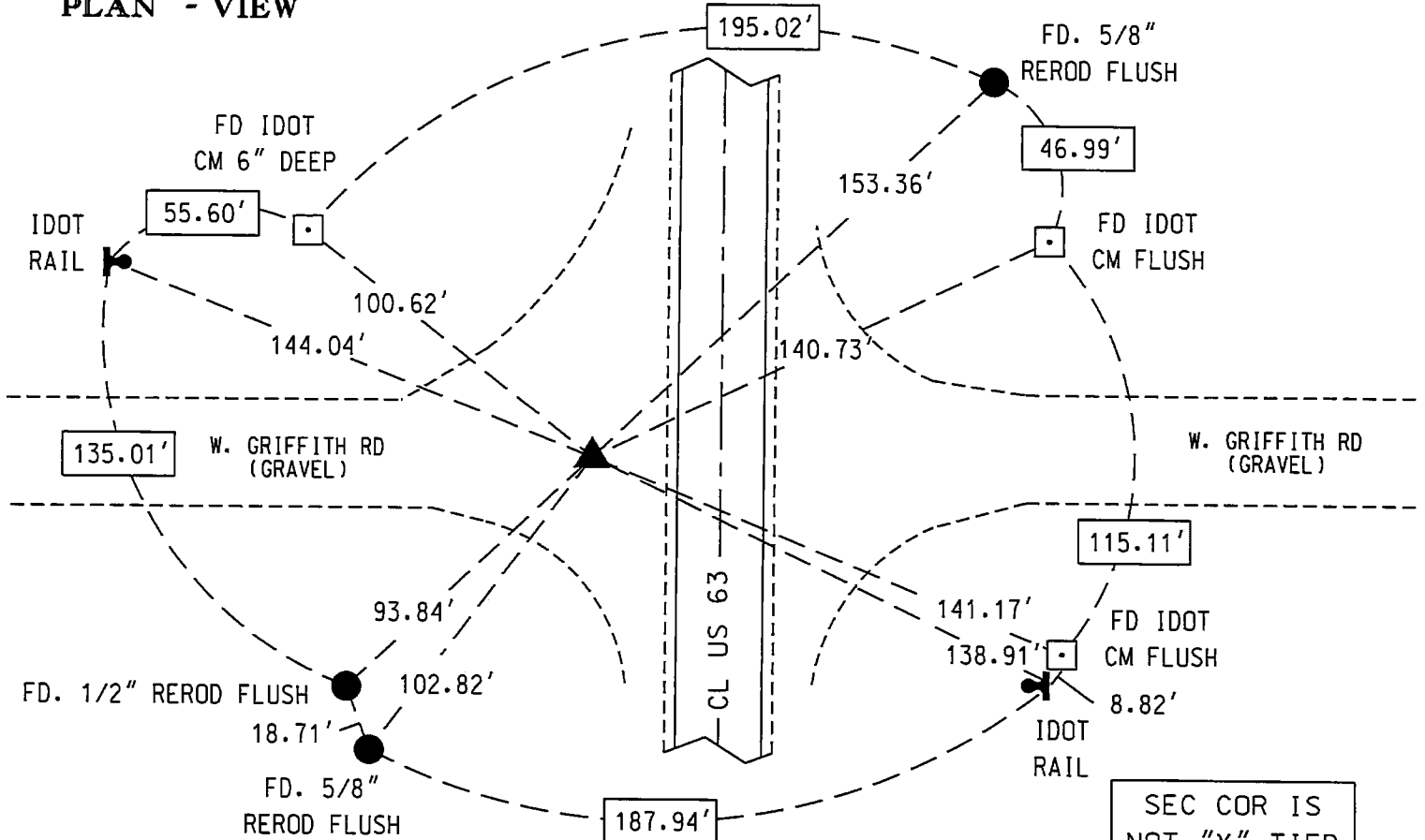
CORNER CERTIFICATE CREATED BECAUSE THE CORNER MONUMENT HAS CHANGED.



COORDINATE VALUE WAS ESTABLISHED UTILIZING NAD83 (2011)(EPOCH 2010) DATUM USING THE IOWA REGIONAL COORDINATE SYSTEM ZONE 5 PROJECTION IN U.S. SURVEY FEET

NE CORNER - #8028
N - 8797992.0960
E - 15444276.3680

PLAN - VIEW



SEC COR IS NOT "X" TIED

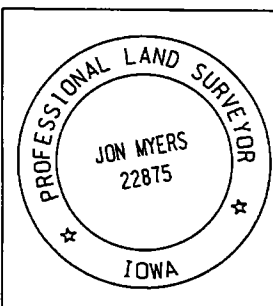
Corner to be Indexed

NE CORNER

Sec. Twp. Range

10 87 14

Drawn by: BRW



I hereby certify that this Land Surveying document was prepared by me or under my direct personal supervision and that I am a duly licensed Professional Land Surveyor under the laws of the State of Iowa.

Signature: Jon Myers

Date: November 8, 2023 Lic. No. 22875

My license renewal date is December 31, 2024.

Pages or sheets covered by this seal. 1

SM = SET SURVEY MARK
TAB IN WOOD POST

● = SET 5/8 REROD

□ = FND CONC. MON.

⌵ = FD IDOT RAIL

⊙ = FD/SET IDOT PI